

Data Sheet | Item Number: 2091-1107

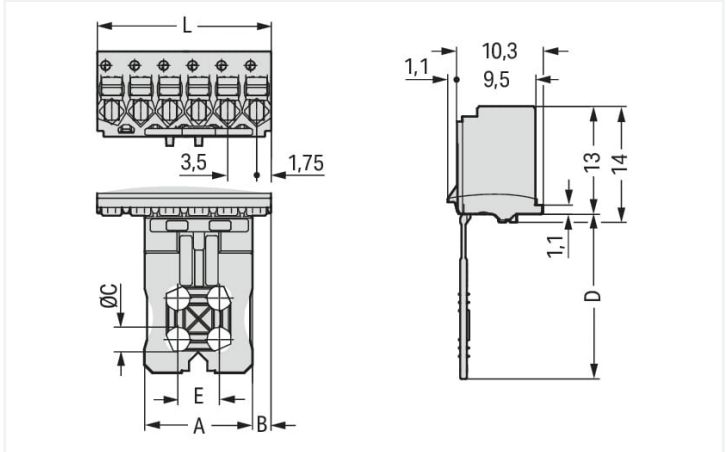
1-conductor female connector; push-button; Push-in CAGE CLAMP®; 1.5 mm²; Pin spacing 3.5 mm; 7-pole; Gripping plate; 1,50 mm²; light gray

<https://www.wago.com/2091-1107>



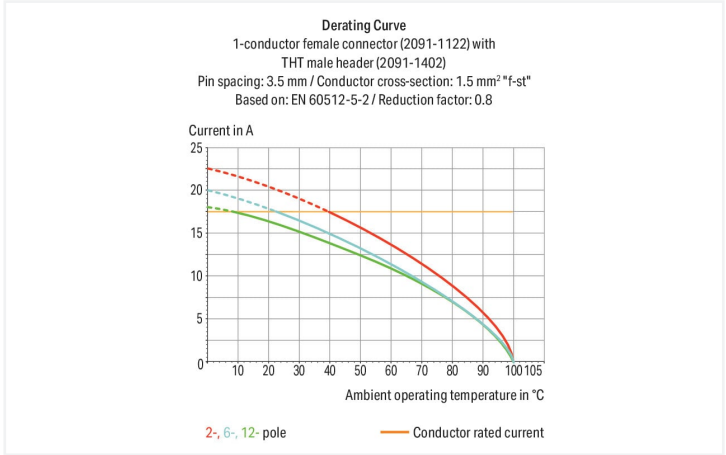
Color: ■ light gray

Similar to illustration



Dimensions in mm  
L = (pole no. – 1) x pin spacing

Gripping plate Dimensions (in mm):					
Polzahl	A	B	C	D	E
2	6	0.45	–	17	–
3	6	2.20	–	17	–
4	6	2.20	–	17	–
5	13	2.25	3.0	20	5
6	13	2.25	3.0	20	5
7	13	5.75	3.0	20	5
8	13	5.75	3.0	20	5
10	27	2.25	4.2	25	8
12	27	5.75	4.2	25	8



- Universal connection of all conductor types
- Simple, push-in termination of solid and ferruled conductors
- Easy-to-use design does not require special tools
- Ability to wire while mated or unmated
- Testing parallel to conductor entry – tip contact
- Also available with gripping plates
- Integrated locking latches prevent accidental disconnection

### Notes

Safety information

Variants:

The **picoMAX® Pluggable Connection System** includes connectors without breaking capacity in accordance with DIN EN 61984. When used as intended, these connectors must not be connected/disconnected when live or under load. The circuit design should ensure header pins, which can be touched, are not live when unmated.

Direct marking  
Other versions (or variants) can be requested from WAGO Sales or configured at <https://configurator.wago.com/>.



Electrical data							
Ratings per				IEC/EN 60664-1			
Overvoltage category	III		III	II			
Pollution degree	3		2	2			
Nominal voltage	160 V		160 V	320 V			
Rated surge voltage	2.5 kV		2.5 kV	2.5 kV			
Rated current	10 A		10 A	10 A			

Approvals per				UL 1059			
Use group	B		C	D			
Rated voltage	300 V		-	300 V			
Rated current	10 A		-	10 A			

Connection data							
Connection points	7			Connection 1			
Total number of potentials	7			Connection technology	Push-in CAGE CLAMP®		
Number of connection types	1			Actuation type	Push-button		
Number of levels	1			Actuation direction 1	Operation parallel to conductor entry		
				Solid conductor	0.2 ... 1.5 mm² / 24 ... 14 AWG		
				Fine-stranded conductor	0.2 ... 1.5 mm² / 24 ... 14 AWG		
				Fine-stranded conductor; with insulated ferrule	0.25 ... 0.75 mm²		
				Fine-stranded conductor; with uninsulated ferrule	0.25 ... 1.5 mm²		
				Strip length	8 ... 9 mm / 0.31 ... 0.35 inches		
				Pole number	7		

Physical data	
Pin spacing	3.5 mm / 0.138 inches
Width	24.5 mm / 0.965 inches
Height	33 mm / 1.299 inches
Depth	11.4 mm / 0.449 inches

Mechanical data	
Variable coding	Yes
Design	with gripping plate
Anti-rotation protection	Yes

Plug-in connection	
Contact type (pluggable connector)	Female connector/socket
Connector (connection type)	for conductor
Mismating protection	No
Plugging without loss of pin spacing	Yes

Material data	
Note (material data)	<a href="https://www.wago.com/us/material-specifications">Information on material specifications can be found here</a>
Color	light gray
Material group	I
Insulation material	Polyphthalamide (PPA GF)
Flammability class per UL94	V0
Clamping spring material	Chrome-nickel spring steel (CrNi)
Contact material	Electrolytic copper (E <sub>Cu</sub> )
Contact plating	Tin
Fire load	0.017 MJ
Weight	3.9 g



Environmental requirements	
Limit temperature range	-60 ... +100 °C
Processing temperature	-35 ... +60 °C

Commercial data	
eCl@ss 10.0	27-14-11-06
eCl@ss 9.0	27-14-11-06
ETIM 8.0	EC001284
ETIM 7.0	EC001284
PU (SPU)	50 pcs
Packaging type	Box
Country of origin	DE
GTIN	4055143478830
Customs tariff number	85366990990

Environmental Product Compliance	
RoHS Compliance Status	Compliant, No Exemption

Approvals / Certificates

General approvals



Approval	Standard	Certificate Name
CB DEKRA Certification B.V.	IEC 61984	NL-49736/A1
CSA DEKRA Certification B.V.	C22.2	2362521
CSA DEKRA Certification B.V.	C22.2 No. 158	2362521
KEMA/KEUR DEKRA Certification B.V.	EN 61984	71-102260 REV.1
UL Underwriters Laboratories Inc.	UL 1977	E45171
UR Underwriters Laboratories Inc.	UL 1059	E45172

Downloads

Environmental Product Compliance

Compliance Search	
Environmental Product Compliance 2091-1107	



Documentation

Additional Information			
Technical Section	03.04.2019	pdf 2010.85 KB	

CAD/CAE-Data

CAD data
2D/3D Models 2091-1107

CAE data
ZUKEN Portal 2091-1107

1 Compatible Products

1.1 System counterpart

1.1.1 Male connector/plug



[Item No.: 2091-1427](#)  
THT male header; 1.0 mm Ø solder pin; angled; Pin spacing 3.5 mm; 7-pole; light gray



[Item No.: 2091-1407](#)  
THT male header; 1.0 mm Ø solder pin; straight; Pin spacing 3.5 mm; 7-pole; light gray

1.2 Optional Accessories

1.2.1 Coding

1.2.1.1 Coding



[Item No.: 2091-1610](#)  
Coding key carrier; suitable for 3.5 mm pin spacing; orange

1.2.2 Test and measurement

1.2.2.1 Testing accessories



[Item No.: 735-500](#)  
WAGO Test pin; 1 mm Ø; 30 V AC / 60 V DC; CAT0; 1 A; 6 mm uninsulated; Test lead for soldering up to 0,5mm²

1.2.3 Tool

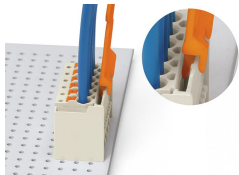
1.2.3.1 Operating tool



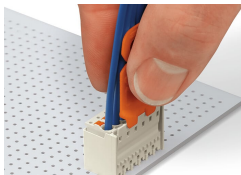
Item No.: 210-719  
Operating tool; Blade: 2.5 x 0.4 mm; with a partially insulated shaft

Installation Notes

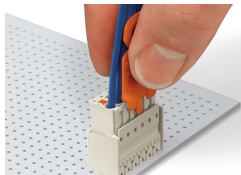
Locking system



Disconnecting a female connector via unlocking tool. Plug unlocking tool into the male header's locking latch.

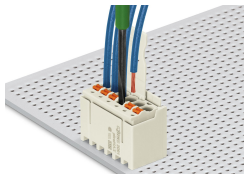


Insert unlocking tool until it hits the back-stop. Wedge opens locking latches.



Pull on both unlocking tool and conductors to remove female connector from male header.

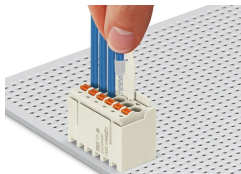
Conductor termination



Inserting fine-stranded conductor into mated female connector via push-button.



Inserting a fine-stranded conductor into an unmated female connector via push-button.



Inserting solid and ferruled conductors via push-in termination.

Marking



Pole marking via factory direct marking.

Coding



Coding a female connector (via coding key carrier and two keys for female connector, see symbol).

Testing



Testing via 1 mm Ø test pin – touch contact.