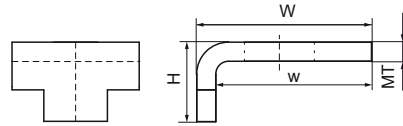
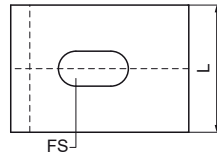
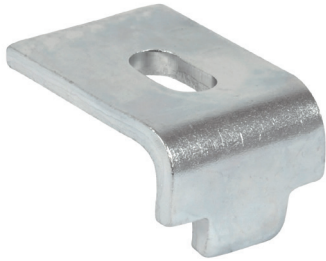


Walraven RapidStrut® Rail Beam Clamp

(H3615)

to connect Strut rails to steel beams



Features & benefits

- for a solid fixing to steel construction without the need for welding or drilling
- always use 2 beam clamps per fixing
- material: steel 1.0332
- zinc plated

Product Number	For Rail Type	Clamping Range	Total Height	Total Width	Total Length	Width	Material Thickness	Fixing Slot	Maximum Allowed Load Faz	Torque Moment For Installation
<i>Reference Letter</i>		<i>CR</i>	<i>H</i>	<i>W</i>	<i>L</i>	<i>w</i>	<i>MT</i>	<i>FS</i>	<i>F_{a,z}</i>	<i>T_{inst.}</i>
<i>Unit description</i>		<i>mm</i>	<i>mm</i>	<i>mm</i>	<i>mm</i>	<i>mm</i>	<i>mm</i>	<i>mm</i>	<i>N</i>	<i>Nm</i>
66583761	41x21, 41x41, 41x51, 41x62, 41x82	1 - 15	30	50	40	44	6.00	22x8	8,300	20