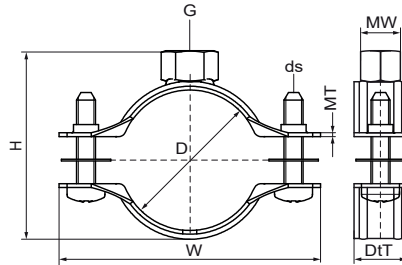


Walraven 2S Clamp (M8)

(B0523)

for insulated pipe, steel, cast iron and plastic (multilayer) pipe



Features & benefits

- gapless range
- anti loss washers prevent screws from falling out during installation
- perfect solution for insulated pipe supports
- material: steel
- zinc plated



EPD

Product Number	Outside Pipe Diameter	DN	Pipe Diameter Imperial	Connection Thread	Total Height	Total Width	Total Depth	Material Width	Material Thickness	Screw Size	Maximum Allowed Load Faz	Approvals
Reference Letter	D	D	D	G	H	W	DtT	MW	MT	ds	F _{0,z}	
Unit description	mm		"		mm	mm	mm	mm	mm		N	
33025014	10 - 14	DN 6	-	M8	27	46	20	20	1.00	M5	700	ITB (KOT), RAL-GZ 655/B, EPD
33025019	15 - 19	DN 10	3/8	M8	32	51	20	20	1.00	M5	700	ITB (KOT), RAL-GZ 655/B, EPD
33025024	20 - 24	DN 15	1/2	M8	37	56	20	20	1.00	M5	700	ITB (KOT), RAL-GZ 655/B, EPD
33025030	25 - 30	DN 20	3/4	M8	43	62	20	20	1.00	M5	700	ITB (KOT), RAL-GZ 655/B, EPD
33025037	31 - 37	DN 25	1	M8	50	69	20	20	1.00	M5	700	ITB (KOT), RAL-GZ 655/B, EPD
33025046	38 - 46	DN 32	1 1/4	M8	60	78	20	20	1.25	M5	850	ITB (KOT), RAL-GZ 655/B, EPD
33025052	47 - 52	DN 40	1 1/2	M8	66	84	20	20	1.25	M5	850	ITB (KOT), RAL-GZ 655/B, EPD
33025061	53 - 61	DN 50	2	M8	75	93	20	20	1.25	M5	850	ITB (KOT), RAL-GZ 655/B, EPD
33025067	62 - 67	-	-	M8	81	99	20	20	1.25	M5	850	ITB (KOT), RAL-GZ 655/B, EPD