

Data Sheet | Item Number: 285-183

2-conductor through terminal block; 95 mm²; suitable for Ex e II applications; lateral marker slots; with fixing flanges; POWER CAGE CLAMP; 95,00 mm²; light gray

<https://www.wago.com/285-183>



Color: ■ light gray



High-current terminal block, 285 Series, light gray

Easily, quickly and safely connect conductors with this through terminal block (item number 285-183). Strip lengths must be 35 mm when connecting conductors to this through terminal block. This product incorporates conductor terminals and utilizes POWER CAGE CLAMP. The POWER CAGE CLAMP is perfect for connecting large conductor cross-sections. This universal connector is both reliable and maintenance-free. What's more, you can use it to connect all types of conductors and the clamping point can be locked open, making it easier to use. You do not need to use a torque wrench or prepare the conductor. For example, crimping ferrules is not necessary. Depending on the conductor type, this through terminal block is ideal for conductor cross sections ranging from 25 mm² to 95 mm².

This product is designed for specific Ex applications (please refer to the product datasheet).

Electrical data

Ratings per IEC/EN

Ratings per IEC/EN 60947-7-1

Ratings per UL

Approvals per UL 1059

Rated voltage UL (Use Group B) 600 V

Rated current UL (Use Group B) 200 A

Rated voltage UL (Use Group C) 600 V

Rated current UL (Use Group C) 200 A

Ratings per CSA

| | |
|---------------------------------|-----------------|
| Approvals per | CSA 22.2 No 158 |
| Rated voltage CSA (Use Group B) | 600 V |
| Rated current CSA (Use Group B) | 210 A |
| Rated voltage CSA (Use Group D) | 600 V |
| Rated current CSA (Use Group D) | 210 A |

Ex information

| | |
|-------------------------------------|---|
| Reference to hazardous areas | See "Downloads – Documentation – Additional Information: Technical Section; Technical Explications" |
| Ratings per | ATEX: PTB 98 ATEX 3134 U (Ex eb IIC Gb) |
| Rated voltage EN (Ex e II) | 880 V |
| Rated current (Ex e II) | 211 A |
| Rated current (Ex e II) with jumper | 175 A |

General information

| | |
|------------------|-------------------|
| Wiring direction | Side-entry wiring |
|------------------|-------------------|

Connection Data

| | |
|----------------------------|---|
| Clamping units | 2 |
| Total number of potentials | 1 |
| Number of levels | 1 |
| Number of jumper slots | 2 |

Connection 1

| | |
|---|---|
| Connection technology | POWER CAGE CLAMP |
| Actuation type | T-wrench; 8 mm |
| Connectable conductor materials | Copper |
| Nominal cross-section | 95 mm ² |
| Solid conductor | 25 ... 95 mm ² / 4 ... 4/0 AWG |
| Stranded conductor | 25 ... 95 mm ² / 4 ... 4/0 AWG |
| Fine-stranded conductor | 25 ... 95 mm ² / 4 ... 4/0 AWG |
| Fine-stranded conductor; with insulated ferrule | 25 ... 95 mm ² / 4 ... 4/0 AWG |
| Fine-stranded conductor; with uninsulated ferrule | 25 ... 95 mm ² / 4 ... 4/0 AWG |
| Strip length | 35 mm / 1.38 inches |
| Wiring direction | Side-entry wiring |

Physical data

| | |
|-----------------------------------|-----------------------|
| Width | 25 mm / 0.984 inches |
| Height | 107 mm / 4.213 inches |
| Depth from upper-edge of DIN-rail | 101 mm / 3.976 inches |

Mechanical data

| | |
|---------------|-----------------|
| Mounting type | Mounting flange |
| Mounting type | Panel mounting |
| Marking level | Side marking |

Material data

| | |
|------------------------------------|--|
| Note (material data) | Information on material specifications can be found here |
| Color | light gray |
| Material group | I |
| Insulation material (main housing) | Polyamide (PA66) |
| Flammability class per UL94 | V0 |
| Fire load | 3.79 MJ |
| Weight | 268.4 g |

Environmental requirements

| | |
|----------------------------------|-----------------|
| Processing temperature | -35 ... +85 °C |
| Continuous operating temperature | -60 ... +105 °C |

Commercial data

| | |
|-----------------------|---------------|
| PU (SPU) | 5 pcs |
| Packaging type | Box |
| Country of origin | PL |
| GTIN | 4066966620030 |
| Customs tariff number | 85369010000 |

Product Classification

| | |
|-----------|----------------------|
| UNSPSC | 39121410 |
| ETIM 9.0 | EC000897 |
| ETIM 10.0 | EC000897 |
| ECCN | NO US CLASSIFICATION |

Environmental Product Compliance

| | |
|------------------------|-------------------------|
| RoHS Compliance Status | Compliant, No Exemption |
|------------------------|-------------------------|

Approvals / Certificates

General approvals



| Approval | Standard | Certificate Name |
|---------------------------------------|----------|------------------|
| CCA DEKRA Certification B.V. | EN 60947 | NTR NL-7707 |
| CSA CSA Group | C22.2 | 1151144 |
| KEMA/KEUR DEKRA Certification B.V. | EN 60947 | 71-105562 |

Approvals for marine applications



| Approval | Standard | Certificate Name |
|---|----------|-------------------|
| ABS American Bureau of Ship- ping | EN 60947 | 24-0152298-PDA |
| DNV GL Det Norske Veritas, Ger- manischer Lloyd | - | TAE00001V2 |
| PRS Polski Rejestr Statków | - | TE/1094/880590/23 |

Approvals for hazardous areas



| Approval | Standard | Certificate Name |
|---|-------------|--|
| AEx Underwriters Laboratories Inc. | - | E185892 (AEx eb II C resp. Ex eb II C) |
| ATEX Physikalisch Technische Bundesanstalt | EN 60079-0 | PTB 98 ATEX 3134 U (II 2 G Ex eb IIC Gb or I M 2 Ex eb I Mb) |
| IECEx Physikalisch Technische Bundesanstalt | IEC 60079-0 | IECEx PTB 16.0001U (Ex eb IIC Gb or Ex eb I Mb) |

Downloads

Environmental Product Compliance

Compliance Search

Environmental Product Compliance 285-183



1 Compatible Products

1.1 Optional Accessories

1.1.1 Cover

1.1.1.1 Cover



[Item No.: 285-169](#)

Finger guard; touchproof cover protects unused conductor entries and jumper slots; for 95 mm² high-current tbs; yellow

1.1.2 Current and voltage tap

1.1.2.1 Current and voltage tap



[Item No.: 855-951/250-000](#)

Current and voltage tap up to 95 mm²; Primary rated current: 250 A; Secondary rated current: 1 A; Rated power: 0.2 VA; Accuracy class: 0.5; fused

1.1.3 Ferrule

1.1.3.1 Ferrule



[Item No.: 216-435](#)

Ferrule; Sleeve for 50 mm² / AWG 1; unisolated; electro-tin plated; electrolytic copper; gastight crimped; acc. to DIN 46228, Part 1/08.92

1.1.4 Installation

1.1.4.1 Mounting accessories



[Item No.: 285-168](#)

Fixing element; for 95 mm² high-current terminal blocks; orange



[Item No.: 249-197](#)

Screwless end stop; 14 mm wide; for DIN-rail 35 x 15 and 35 x 7.5; gray

1.1.5 Jumper

1.1.5.1 Jumper



Item No.: 285-495

Jumper; insulated; gray

1.1.6 Marking

1.1.6.1 Group marker carrier



Item No.: 249-105

Group marker carrier; gray

1.1.6.2 Marker



Item No.: 793-5501/000-006

WMB marking card; as card; for terminal block width 5 - 17.5 mm; stretchable 5 - 5.2 mm; plain; snap-on type; blue



Item No.: 793-5501/000-014

WMB marking card; as card; for terminal block width 5 - 17.5 mm; stretchable 5 - 5.2 mm; plain; snap-on type; brown



Item No.: 793-5501/000-007

WMB marking card; as card; for terminal block width 5 - 17.5 mm; stretchable 5 - 5.2 mm; plain; snap-on type; gray



Item No.: 793-5501/000-023

WMB marking card; as card; for terminal block width 5 - 17.5 mm; stretchable 5 - 5.2 mm; plain; snap-on type; green



Item No.: 793-5501/000-017

WMB marking card; as card; for terminal block width 5 - 17.5 mm; stretchable 5 - 5.2 mm; plain; snap-on type; light green



Item No.: 793-5501/000-012

WMB marking card; as card; for terminal block width 5 - 17.5 mm; stretchable 5 - 5.2 mm; plain; snap-on type; orange



Item No.: 793-5501/000-005

WMB marking card; as card; for terminal block width 5 - 17.5 mm; stretchable 5 - 5.2 mm; plain; snap-on type; red



Item No.: 793-5501/000-024

WMB marking card; as card; for terminal block width 5 - 17.5 mm; stretchable 5 - 5.2 mm; plain; snap-on type; violet



Item No.: 793-5501

WMB marking card; as card; for terminal block width 5 - 17.5 mm; stretchable 5 - 5.2 mm; plain; snap-on type; white



Item No.: 793-5501/000-002

WMB marking card; as card; for terminal block width 5 - 17.5 mm; stretchable 5 - 5.2 mm; plain; snap-on type; yellow



Item No.: 793-501/000-006

WMB marking card; as card; not stretchable; plain; snap-on type; blue



Item No.: 793-501/000-007

WMB marking card; as card; not stretchable; plain; snap-on type; gray



Item No.: 793-501/000-023

WMB marking card; as card; not stretchable; plain; snap-on type; green



Item No.: 793-501/000-017

WMB marking card; as card; not stretchable; plain; snap-on type; light green



Item No.: 793-501/000-012

WMB marking card; as card; not stretchable; plain; snap-on type; orange



Item No.: 793-501/000-005

WMB marking card; as card; not stretchable; plain; snap-on type; red



Item No.: 793-501/000-024

WMB marking card; as card; not stretchable; plain; snap-on type; violet



Item No.: 793-501

WMB marking card; as card; not stretchable; plain; snap-on type; white



Item No.: 793-501/000-002

WMB marking card; as card; not stretchable; plain; snap-on type; yellow



Item No.: 2009-115/000-006

WMB-Inline; for Smart Printer; 1500 pieces on roll; stretchable 5 - 5.2 mm; plain; snap-on type; blue



Item No.: 2009-115/000-007

WMB-Inline; for Smart Printer; 1500 pieces on roll; stretchable 5 - 5.2 mm; plain; snap-on type; gray



Item No.: 2009-115/000-023

WMB-Inline; for Smart Printer; 1500 pieces on roll; stretchable 5 - 5.2 mm; plain; snap-on type; green



Item No.: 2009-115/000-017

WMB-Inline; for Smart Printer; 1500 pieces on roll; stretchable 5 - 5.2 mm; plain; snap-on type; light green



Item No.: 2009-115/000-012

WMB-Inline; for Smart Printer; 1500 pieces on roll; stretchable 5 - 5.2 mm; plain; snap-on type; orange



Item No.: 2009-115/000-005

WMB-Inline; for Smart Printer; 1500 pieces on roll; stretchable 5 - 5.2 mm; plain; snap-on type; red



Item No.: 2009-115/000-024

WMB-Inline; for Smart Printer; 1500 pieces on roll; stretchable 5 - 5.2 mm; plain; snap-on type; violet



Item No.: 2009-115

WMB-Inline; for Smart Printer; 1500 pieces on roll; stretchable 5 - 5.2 mm; plain; snap-on type; white



Item No.: 2009-115/000-002

WMB-Inline; for Smart Printer; 1500 pieces on roll; stretchable 5 - 5.2 mm; plain; snap-on type; yellow

1.1.6.3 Marker carrier



Item No.: 285-442

Adaptor; gray

1.1.7 Power tap

1.1.7.1 Power tap



Item No.: 285-407

Power tap; for 95 mm² high-current tbs; gray

1.1.8 Protective warning marker

1.1.8.1 Cover



Item No.: 285-170

Protective warning marker; with high-voltage symbol, black; yellow



Item No.: 285-175

Protective warning marker; yellow

1.1.9 Tool

1.1.9.1 Operating tool



Item No.: 285-172

Allen wrench; with a partially insulated shaft; green



Item No.: 285-173

Allen wrench; with a partially insulated shaft; with anti-rotation protection; green

Installation Notes

Conductor termination

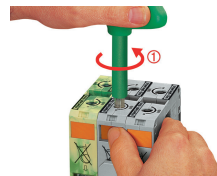


For the optimal clamping force:

- Bend conductor
- Cut conductor to length (conductor end must be straight)
- Strip conductor

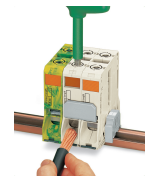


Always observe the on-unit printed strip length guide!

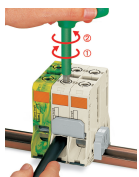


Conductor termination – step 1:

Rotate the T-wrench counter-clockwise to the stop. Next, push in the orange locking tab. The clamp is locked open for hands-free wiring.

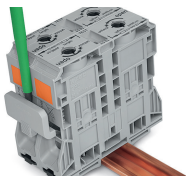
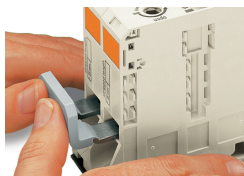


Insert a stripped conductor into the clamping unit until it hits the backstop. Hold in this position.



A short counter-clockwise rotation releases the tab. When unlocked, the T-wrench rotates clockwise, securely clamping the conductor.

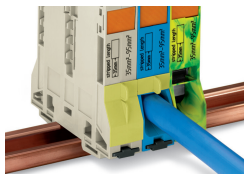
Commoning



Commoning with an adjacent jumper: insert the jumper above the conductor entry hole – prior to conductor termination. The nominal cross-section remains unchanged.

Removing jumper via operating tool.

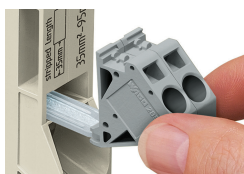
Cover



Protective warning marker may indicate: Notice: Power is still on even after switching off the main switch!

Yellow, detachable finger guards provide touch-proof safety by shielding jumper contact slots and/or unused conductor entries.

Power tap



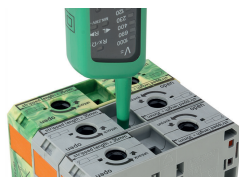
Easily and consistently tap directly into the power supply. Insert the unwired tap before opening the clamping unit.

Security



Risk of Injury!
Do not insert fingers in the conductor entry!

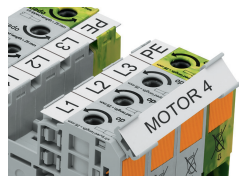
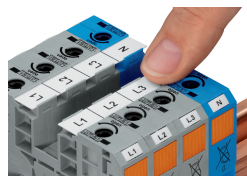
Testing



Testing via touch-proof 4 mm Ø test plugs (not available from WAGO, but offered by industry suppliers such as, Multi-Contact Deutschland GmbH).

Testing
Voltage measurements can be performed, e.g., using a 2-pole voltage tester (206-707).

Marking



WMB markers or self-adhesive, printable marking strips can be accommodated on 35, 50 and 95 mm² high-current terminal blocks.

Marker carrier (Item No. 285-442) for marking strips (Item No. 2009-110) or 2 WMB markers for 285-13x, 285-15x and 285-19x Terminal Blocks