

Data Sheet | Item Number: 790-116

Shield clamping saddle; 19 mm wide; diameter of compatible conductor; 7 ... 16 mm

<https://www.wago.com/790-116>



Color: ■ silver-colored

Notes

Safety Information

Cannot be used for connecting ground conductors!

Physical data

Width

19 mm / 0.748 inches

Material data

Color

silver-colored

Fire load

0 MJ

Weight

16.2 g

Material

Steel V2A
Stainless steel

Commercial data

Product Group

2 (Terminal Block Accessories)

PU (SPU)

50 (10) pcs

Packaging type

Box

Country of origin

DE

GTIN

4017332611756

Customs tariff number

85369010000

Product Classification	
UNSPSC	39121722
eCl@ss 10.0	27-14-11-50
eCl@ss 9.0	27-14-11-50
ETIM 9.0	EC002020
ETIM 10.0	EC002020
ECCN	NO US CLASSIFICATION

Environmental Product Compliance	
RoHS Compliance Status	Compliant, No Exemption

Processing temperature (min.)	-35 °C
Processing temperature (max.)	85 °C
Processing temperature	-35 ... +85 °C
Continuous operating temperature from	-60 °C
Continuous operating temperature up to	105 °C
Continuous operating temperature	-60 ... +105 °C

Downloads

Environmental Product Compliance

Compliance Search	
Environmental Product Compliance 790-116	↓

Documentation

Bid Text			
790-116	19.02.2019	xml 2.69 KB	↓
790-116	28.11.2018	doc 23.50 KB	↓

CAD/CAE-Data

CAD data	
2D/3D Models 790-116	↓

CAE data	
EPLAN Data Portal 790-116	↓
WSCAD Universe 790-116	↓
ZUKEN Portal 790-116	↓

1 Compatible Products

1.1 Optional Accessories

1.1.1 DIN-rail

1.1.1.1 Shield termination



Item No.: 790-145
Carrier rail; with special perforations; 1000 mm long; tin-plated; silver-colored

1.1.2 Installation

1.1.2.1 Shield termination



Item No.: 790-100
Isolated mounting carrier; for busbar with screw M4 x 8 mm; gray



Item No.: 790-101
Isolated mounting carrier; for busbar with sheet metal screw (3.5 x 9) mm; gray

1.1.3 N-busbar

1.1.3.1 Busbar



Item No.: 210-133
Busbar; tin-plated; 1000 mm long; Cu 10 mm x 3 mm; white

1.1.3.2 Mounting accessories



Item No.: 790-133
Busbar; tin-plated; 30 mm long; Cu 10 mm x 3 mm; silver-colored



Item No.: 790-134
Busbar; tin-plated; 50 mm long; Cu 10 mm x 3 mm; silver-colored

1.1.3.3 Shield termination



Item No.: 790-190
U-shaped busbar; Cu 10 mm x 3 mm; for 5 I/O; suitable for 750 Series I/O modules; silver-colored



Item No.: 790-192
U-shaped busbar; Cu 10 mm x 3 mm; for 5 I/O; suitable for 750 Series I/O modules; silver-colored



Item No.: 790-191
U-shaped busbar; Cu 10 mm x 3 mm; for 8 I/O; suitable for 750 Series I/O modules; silver-colored



Item No.: 790-193
U-shaped busbar; Cu 10 mm x 3 mm; for 8 I/O; suitable for 750 Series I/O modules; silver-colored

1.1.4 Shield termination

1.1.4.1 Shield termination



Item No.: 790-115

Carrier with 2 grounding feet; parallel to carrier rail; 125 mm long; Cu 10 mm x 3 mm; gray



Item No.: 790-113

Carrier with grounding foot; 90° to carrier rail; 45 mm long; Cu 10 mm x 3 mm; suitable for 790 Series shield clamping saddles; gray



Item No.: 790-112

Carrier with grounding foot; parallel to carrier rail; 25 mm long; Cu 10 mm x 3 mm; suitable for 790-108 and 790-116; gray

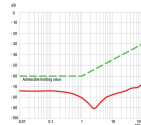


Item No.: 790-114

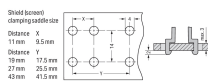
Carrier with grounding foot; parallel to carrier rail; 45 mm long; Cu 10 mm x 3 mm; suitable for 790 Series shield clamping saddles and 791 Series shield clamps; gray

Installation Notes

Negative Shield Attenuation



Hole Dimensions for Panel Mounting



WAGO's shield connection system is highly effective because the clamping unit can be brought very close to the unshielded part of the cable.

Additionally, the spring material is part of the clamping saddle, providing a good electrical connection (the system also acts as a partial strain relief). The spring element integrated in the shield clamping saddle compensates for deformation and settling that results from a connected shield.

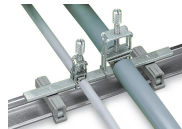
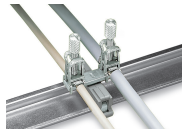


Installation

The shield clamping saddle is shipped ready for direct connection to the (10 x 3) mm busbar or to a drilled mounting plate. After connection, tighten the knurled screw to complete the installation. Maximum tightening torque: 0.5 Nm

Removal

To remove the clamping saddle, unscrew until ratcheted mechanism is released, then slightly tip saddle and remove the clamping saddle.

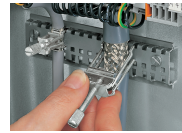
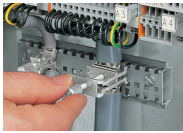


Carrier with grounding foot* (790-113), 45 mm long, busbar 90° to the DIN-rail
*for all shield clamping saddle sizes

Carrier with grounding foot* (790-114), 45 mm long, busbar parallel to the DIN-rail
*for all shield clamping saddle sizes

Carrier with grounding foot* (790-1145), 125 mm long, busbar parallel to the rail
*for all shield clamping saddle sizes

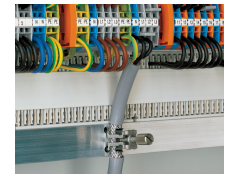
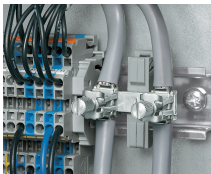
Securing an additional shield clamping saddle.



Tightening/removing a shield clamping saddle.

After connection, tighten the knurled screw to complete the installation. Recommended tightening torque: 0.5 Nm

To remove the clamping saddle, unscrew until ratcheted mechanism is released, then slightly tip saddle and remove the clamping saddle.



Carrier with grounding foot – busbar parallel to the rail

Insulated mounting carriers for a common shield reference potential, independent of housing potential

U-shaped (10 x 3) mm copper busbar

Snap shield clamping saddles into any metal plate (max. thickness: 3 mm).