

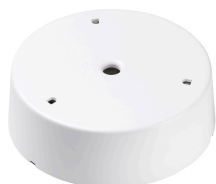
Concord

COLOSSAL CEILING ROSE 2071091



Features

- Ceiling rose with inner connectors for Colossal luminaires.



Product Overview

Product name	COLOSSAL CEILING ROSE
Technology	Accessory
Product EAN number	5025768710911
Warranty	5 years

Data table

GENERAL DATA

Product name	COLOSSAL CEILING ROSE
Technology	Accessory
Warranty	5 years

ELECTRICAL DATA

Control gear required	No
-----------------------	----

PHYSICAL DATA

Nominal Product Diameter (mm)	145
Weight (kg)	0.5

Concord

COLOSSAL CEILING ROSE 2071091

PACKAGING

Single packaging type	Plastic
Product EAN number	5025768710911
Packaging single width (cm)	40.0
Packaging single depth (cm)	1.0
DUN14 (outer)	15025768710918
Packaging outer length / height (cm)	23.4

SAFETY DATA

Special purpose lamp	No
Dry applications use only	No
Suitable for household illumination	No