

## 136-124 10W 6000K specific configuration Downlight 3-CCT | cut out Ø117-127mm | 10/14W

### Introduction

#### Purpose of this Document

This document provides information for 136-124 10W 6000K. During measurement, the product is used in a different mode where output power, colour temperature and/or beam angle are changed from factory standard. These adjustments can be made without altering the product and are designed to be set by the installer. In most cases, the options are set through switches on the product.

#### Results

Total input power	9.4 W
Correlated Colour Temperature	7088 K
Total lumen output	959 lm
Efficiency	102 lm/W

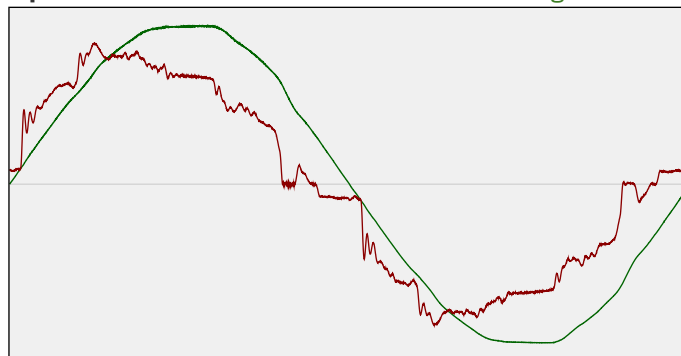
### Electrical measurement details

#### Input Power

RMS Input voltage feed. $V_{RMS}$	235 V
RMS Input current feed. $I_{RMS}$	0.043 A
Total input power	9.4 W
Frequency of input power	50 Hz
Power factor	0.93
Displacement power factor	0.94
Total harmonic distortion of the current	13.74%
Total harmonic distortion of the voltage	2.33%

#### Input Power Curve

Voltage - Current



#### Efficiency

Radiated power efficiency: 34.6%



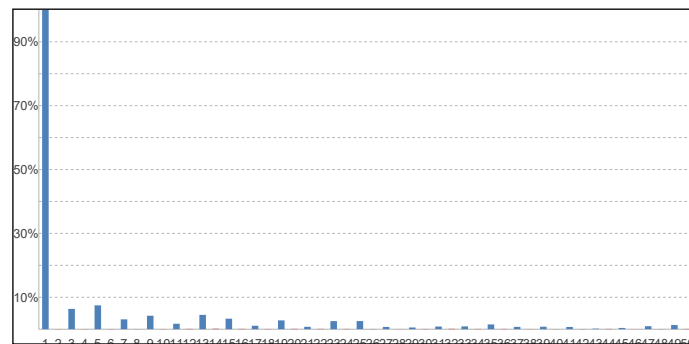
Lumen efficiency: 102 lm/W



#### Harmonics

3rd Harmonic	6.36%
5th Harmonic	7.47%
7th Harmonic	3.09%
9th Harmonic	4.22%
11th Harmonic	1.71%

#### Current Harmonics %



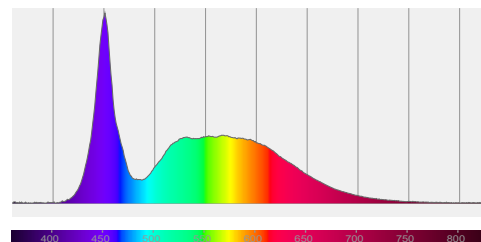
## 136-124 10W 6000K specific configuration

### Colour measurement details

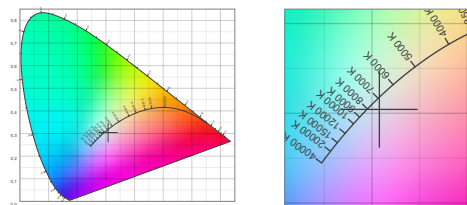
Total lumen output 959 lm  
 Correlated Colour Temperature 7088 K  
 Colour coordinates CIE 1931 (x;y) = (0.308;0.304)  
 Colour deviation from BBL Duv = -0.0074

TM30-18 Colour Fidelity Index  $R_f$  79.6  
 TM30-18 Colour Gamut Index  $R_g$  99.0  
 Colour Rendering Index (Ra) CRI 84.0  
 Colour Rendering Index. (red component)  $R_9 = 33.8$

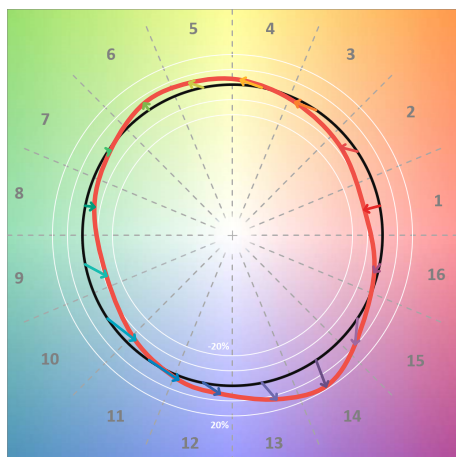
Colour Quality Scale CQS = 77.0  
 Television Lighting Consistency Index TLCI = 69



Relative spectral power distribution



### TM30 details

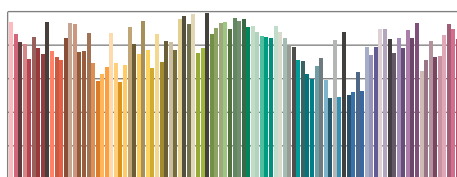


TM30 Colour vectors per hue bin

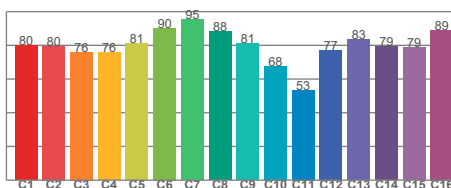


TM30 Colour distortion

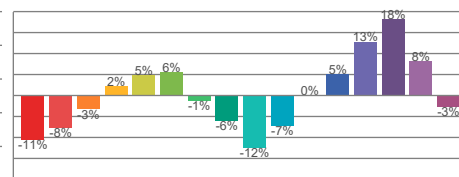
Hue Bin	$R_f$	Shifts (%)	
		Chroma	Hue
C1	80	-11%	-1%
C2	80	-8%	9%
C3	76	-3%	14%
C4	76	2%	15%
C5	81	5%	8%
C6	90	6%	0%
C7	95	-1%	-2%
C8	88	-6%	0%
C9	81	-12%	10%
C10	68	-7%	22%
C11	53	0%	23%
C12	77	5%	12%
C13	83	13%	7%
C14	79	18%	-4%
C15	79	8%	-15%
C16	89	-3%	-6%



TM30-18  $R_f$ -values per reference colour

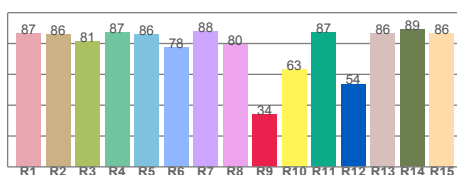


TM30-18  $R_f$ -values per hue bin

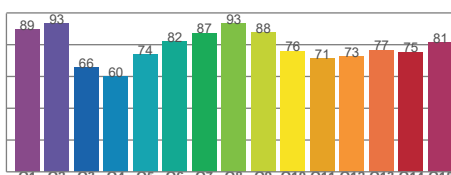


TM30 Chroma shift

### Colour Quality details



Colour Rendering Index



Colour Quality Scale