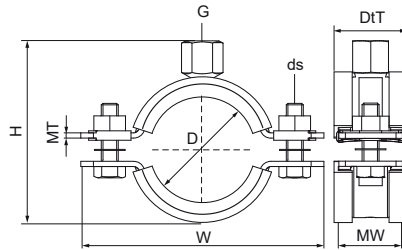


## Walraven Heavy Duty Clamp HD1501 White (1/2") (BUP1000)

(A10091)

for metal pipes



### Features & benefits

- two-part clamp with two locking bolts
- up to and including 5": locking nut is captive, hidden in plastic holder
- heavy design
- bolts secured with anti-loss washer
- with CO<sub>2</sub> welded connection nut
- material: steel
- surface protection:
  - white (RAL 9003) epoxy powder coating (60 μm)
  - product is part of the Walraven BIS UltraProtect® 1000 system
- suitable for in- and outdoor applications
- stands min. 1,000 hours salt spray test (max. 5% red rust) according to ISO 9227
- sound insulating according DIN 4109
- tested for fire safety



Product Number	Outside Pipe Diameter	DN	Pipe Diameter Imperial	Connection Thread	Total Height	Total Width	Total Depth	Material Width	Material Thickness	Screw Size	Maximum Allowed Load Faz	Approvals
Reference Letter	D	D	D	G	H	W	DtT	MW	MT	ds	Fa,z	
Unit description	mm		"		mm	mm	mm	mm	mm		N	
33179019	15 - 19	DN 10	3/8	G1/2"	48	82	32	30	2.50	M8	1,500	CE, ETA, ISO 3822-1, EPD
33179023	19 - 23	DN 15	1/2	G1/2"	52	85	32	30	2.50	M8	1,500	CE, ETA, ISO 3822-1, EPD
33179029	25 - 29	DN 20	3/4	G1/2"	58	91	32	30	2.50	M8	1,500	CE, ETA, ISO 3822-1, EPD
33179035	30 - 35	DN 25	1	G1/2"	65	98	32	30	2.50	M8	1,500	CE, ETA, ISO 3822-1, EPD
33179045	40 - 45	DN 32	1 1/4	G1/2"	75	109	32	30	2.50	M8	1,500	CE, ETA, ISO 3822-1, EPD
33179051	46 - 51	DN 40	1 1/2	G1/2"	81	114	32	30	2.50	M8	1,500	CE, ETA, ISO 3822-1, EPD
33179059	53 - 59	DN 50		G1/2"	88	121	32	30	2.50	M8	1,500	CE, ETA, ISO 3822-1, EPD
33179064	59 - 64	DN 50	2	G1/2"	94	129	32	30	2.50	M8	1,500	CE, ETA, ISO 3822-1, EPD
33179071	65 - 71	-	-	G1/2"	102	137	36	30	3.00	M8	2,300	CE, ETA, ISO 3822-1, EPD
33179078	72 - 78	DN 65	2 1/2	G1/2"	109	144	36	30	3.00	M8	2,300	CE, ETA, ISO 3822-1, EPD
33179085	79 - 85	-	-	G1/2"	116	151	36	30	3.00	M8	2,300	CE, ETA, ISO 3822-1
33179092	86 - 92	DN 80	3	G1/2"	123	158	36	30	3.00	M8	2,300	CE, ETA, ISO 3822-1, EPD
33179109	101 - 109	-	-	G1/2"	140	175	36	30	3.00	M8	2,300	CE, ETA, ISO 3822-1, EPD
33179116	108 - 116	DN 100	4	G1/2"	147	182	36	30	3.00	M8	2,300	CE, ETA, ISO 3822-1, EPD
33179133	125 - 133	-	-	G1/2"	164	199	32	30	3.00	M8	2,300	CE, ETA, ISO 3822-1, EPD
33179140	132 - 140	DN 125	5	G1/2"	171	206	32	30	3.00	M8	2,300	CE, ETA, ISO 3822-1, EPD
33179169	159 - 169	DN 150	6	G1/2"	209	255	45	38	4.00	M10	3,800	ITB (KOT), CE, ETA, ISO 3822-1, EPD
33179227	178 - 188	DN 200	8	G1/2"	267	322	45	38	4.00	M10	3,800	ITB (KOT), CE, ETA, ISO 3822-1, EPD