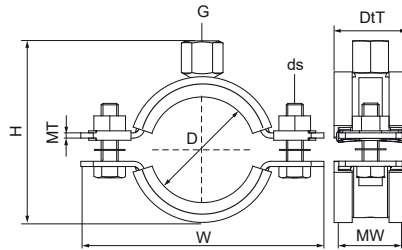


Walraven Heavy Duty Clamp HD1501 White (M8/10) (BUP1000)

(A10041)

for metal pipes



Features & benefits

- two-part clamp with two locking bolts
- up to and including 5": locking nut is captive, hidden in plastic holder
- heavy design
- bolts secured with anti-loss washer
- with CO₂ welded connection nut
- material: steel
- surface protection:
 - white (RAL 9003) epoxy powder coating (60 µm)
 - product is part of the Walraven BIS UltraProtect® 1000 system
- suitable for in- and outdoor applications
- stands min. 1,000 hours salt spray test (max. 5% red rust) according to ISO 9227
- sound insulating according DIN 4109
- tested for fire safety



Product Number	Outside Pipe Diameter	DN	Pipe Diameter Imperial	Connection Thread	Total Height	Total Width	Total Depth	Material Width	Material Thickness	Screw Size	Maximum Allowed Load Faz	Approvals
Reference Letter	D	D	D	G	H	W	DdT	MW	MT	ds	F _{o,z}	
Unit description	mm		"		mm	mm	mm	mm	mm		N	
33139019	15 - 19	DN 10	3/8	M8/M10	53	82	32	30	2.50	M8	1,500	CE, ETA, ISO 3822-1, EPD
33139023	19 - 23	DN 15	1/2	M8/M10	57	85	32	30	2.50	M8	1,500	CE, ETA, ISO 3822-1, EPD
33139029	25 - 29	DN 20	3/4	M8/M10	63	91	32	30	2.50	M8	1,500	CE, ETA, ISO 3822-1, EPD
33139035	30 - 35	DN 25	1	M8/M10	69	98	32	30	2.50	M8	1,500	CE, ETA, ISO 3822-1, EPD
33139045	40 - 45	DN 32	1 1/4	M8/M10	79	109	32	30	2.50	M8	1,500	CE, ETA, ISO 3822-1, EPD
33139051	46 - 51	DN 40	1 1/2	M8/M10	85	114	32	30	2.50	M8	1,500	CE, ETA, ISO 3822-1, EPD
33139059	53 - 59	-	-	M8/M10	92	121	32	30	2.50	M8	1,500	CE, ETA, ISO 3822-1, EPD
33139064	59 - 64	DN 50	2	M8/M10	98	129	32	30	2.50	M8	1,500	CE, ETA, ISO 3822-1, EPD