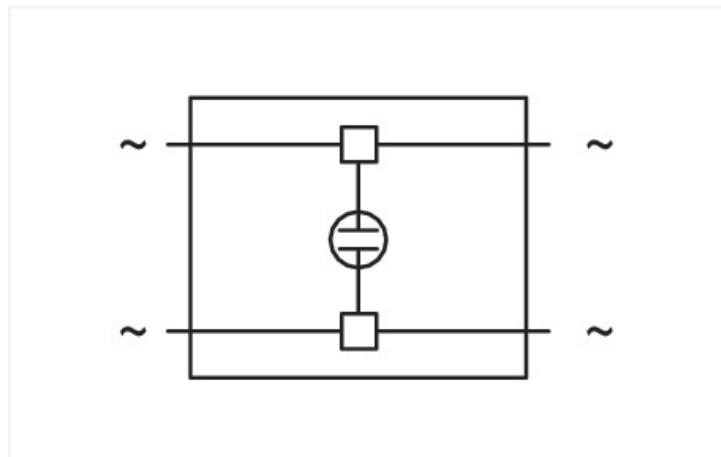
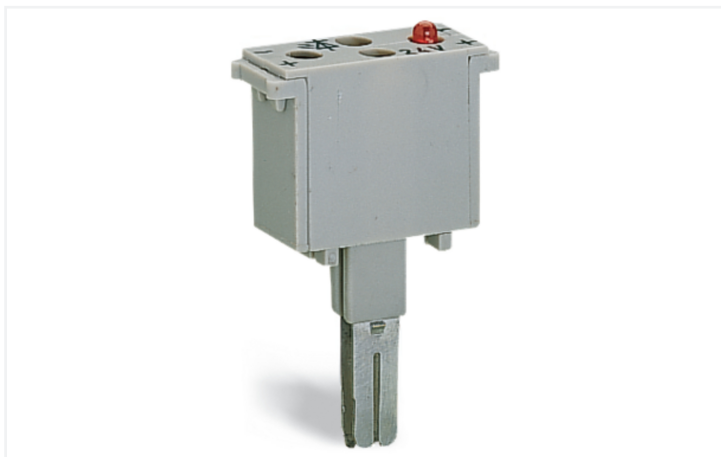


# Data Sheet | Item Number: 280-803/281-418

Component plug; 2-pole; 10 mm wide; gray

<https://www.wago.com/280-803/281-418>



Color: ■ gray

Similar to illustration

Neon indicator module, 280 Series, operating tool

This neon indicator module (item number 280-803/281-418) simplifies electrical installations.

## Electrical data

### Ratings per IEC/EN

Operation status indicator 120 V

### General information

Voltage type 1 AC/DC  
Number/type of diode/LED with neon lamp

## Connection Data

### Connection 1

Actuation type Operating tool

## Physical data

Width 10 mm / 0.394 inches

## Material data

Note (material data) [Information on material specifications can be found here](#)

Color gray

Material group I

Insulation material (main housing) Polyamide (PA66)

Flammability class per UL94 V0

Fire load 0.078 MJ

Weight 4.2 g

**Environmental requirements**

Processing temperature	-35 ... +85 °C
Continuous operating temperature	-60 ... +105 °C

**Commercial data**

Product Group	1 (Rail Mounted Terminal Blocks)
PU (SPU)	50 pcs
Packaging type	Box
Country of origin	DE
GTIN	4045454195991
Customs tariff number	85369010000

**Product Classification**

UNSPSC	39121402
eCl@ss 10.0	27-14-11-49
eCl@ss 9.0	27-14-11-49
ETIM 9.0	EC002018
ETIM 10.0	EC002018
ECCN	NO US CLASSIFICATION

**Environmental Product Compliance**

RoHS Compliance Status	Compliant, No Exemption
------------------------	-------------------------

**Downloads**

**Environmental Product Compliance**

<b>Compliance Search</b>			
Environmental Product Compliance	280-803/281-418		<a href="#">↓</a>

**Documentation**

<b>Bid Text</b>			
280-803/281-418	19.02.2019	xml 2.68 KB	<a href="#">↓</a>
280-803/281-418	27.04.2017	doc 23.00 KB	<a href="#">↓</a>

## CAD/CAE-Data

## CAD data

2D/3D Models  
280-803/281-418



## CAE data

WSCAD Universe  
280-803/281-418



ZUKEN Portal  
280-803/281-418



## 1 Compatible Products

## 1.1 Optional Accessories

## 1.1.1 Terminal blocks

## 1.1.1.1 Through terminal block

**Item No.: 280-901**

2-conductor through terminal block; 2.5 mm<sup>2</sup>; center marking; for DIN-rail 35 x 15 and 35 x 7.5; CAGE CLAMP®; 2,50 mm<sup>2</sup>; gray

**Item No.: 280-101**

2-conductor through terminal block; 2.5 mm<sup>2</sup>; lateral marker slots; for DIN-rail 35 x 15 and 35 x 7.5; CAGE CLAMP®; 2,50 mm<sup>2</sup>; gray

**Item No.: 280-601**

2-conductor through terminal block; 2.5 mm<sup>2</sup>; lateral marker slots; for DIN-rail 35 x 15 and 35 x 7.5; CAGE CLAMP®; 2,50 mm<sup>2</sup>; gray

**Item No.: 280-681**

3-conductor through terminal block; 2.5 mm<sup>2</sup>; center marking; for DIN-rail 35 x 15 and 35 x 7.5; CAGE CLAMP®; 2,50 mm<sup>2</sup>; gray

**Item No.: 280-633**

4-conductor through terminal block; 2.5 mm<sup>2</sup>; center marking; for DIN-rail 35 x 15 and 35 x 7.5; CAGE CLAMP®; 2,50 mm<sup>2</sup>; gray

**Item No.: 280-833**

4-conductor through terminal block; 2.5 mm<sup>2</sup>; center marking; for DIN-rail 35 x 15 and 35 x 7.5; CAGE CLAMP®; 2,50 mm<sup>2</sup>; gray

**Item No.: 280-603**

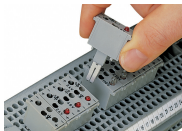
4-conductor through terminal block; 2.5 mm<sup>2</sup>; center marking; for DIN-rail 35 x 15 and 35 x 7.5; CAGE CLAMP®; 2,50 mm<sup>2</sup>; orange

**Item No.: 280-621**

4-conductor through terminal block; 2.5 mm<sup>2</sup>; lateral marker slots; for DIN-rail 35 x 15 and 35 x 7.5; CAGE CLAMP®; 2,50 mm<sup>2</sup>; gray

## Installation Notes

## Installation



Similar to push-in type jumpers, these LED and neon indicator modules are simply pushed into the current bar's contact slots of two adjacent through terminal blocks, providing the following advantages:

- Compatibility with all 280 Series Through Terminal Blocks
- Easy retrofits for existing systems
- Additional advantages:
  - Separation into functional and wiring levels
  - Fast replacement of other functional units