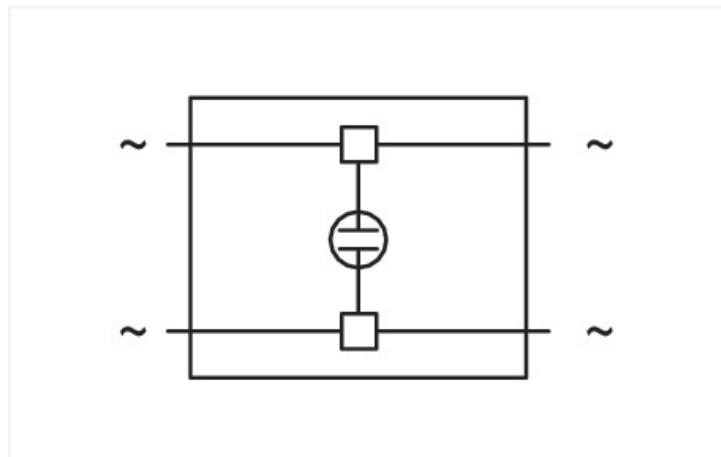
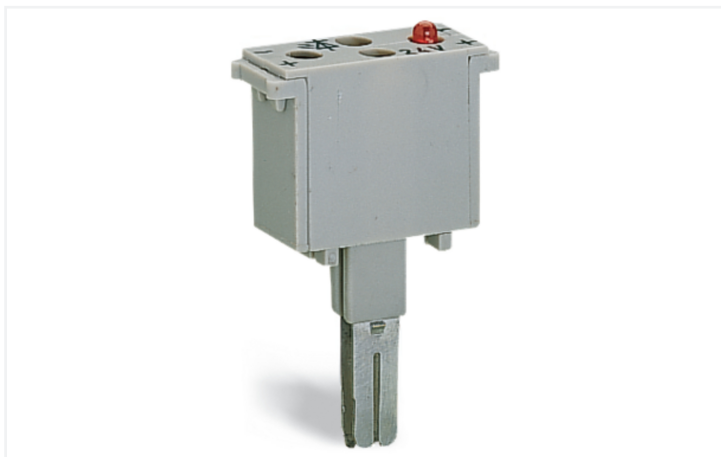


Data Sheet | Item Number: 280-803/281-417

Component plug; 2-pole; 10 mm wide; gray

<https://www.wago.com/280-803/281-417>



Color: ■ gray

Similar to illustration

Neon indicator module, 280 Series, gray

This neon indicator module (item number 280-803/281-417) simplifies electrical installations.

Electrical data

Ratings per IEC/EN

Operation status indicator 230 V

General information

Voltage type 1 AC/DC
Number/type of diode/LED with neon lamp

Connection Data

Connection 1

Actuation type Operating tool

Physical data

Width 10 mm / 0.394 inches

Material data

Note (material data) [Information on material specifications can be found here](#)

Color gray

Material group I

Insulation material (main housing) Polyamide (PA66)

Flammability class per UL94 V0

Fire load 0.078 MJ

Weight 4.4 g

Environmental requirements

Processing temperature	-35 ... +85 °C
Continuous operating temperature	-60 ... +105 °C

Commercial data

Product Group	1 (Rail Mounted Terminal Blocks)
PU (SPU)	50 pcs
Packaging type	Box
Country of origin	DE
GTIN	4045454195984
Customs tariff number	85366990990

Product Classification

UNSPSC	39121409
eCl@ss 10.0	27-14-11-49
eCl@ss 9.0	27-14-11-49
ETIM 9.0	EC002018
ETIM 10.0	EC002018
ECCN	NO US CLASSIFICATION

Environmental Product Compliance

RoHS Compliance Status	Compliant, No Exemption
------------------------	-------------------------

Downloads

Environmental Product Compliance

Compliance Search			
Environmental Product Compliance	280-803/281-417		

Documentation

Bid Text			
280-803/281-417	19.02.2019	xml 2.68 KB	
280-803/281-417	27.04.2017	doc 23.50 KB	

CAD/CAE-Data

CAD data

2D/3D Models
280-803/281-417



CAE data

WSCAD Universe
280-803/281-417



ZUKEN Portal
280-803/281-417



1 Compatible Products

1.1 Optional Accessories

1.1.1 Terminal blocks

1.1.1.1 Through terminal block

**Item No.: 280-901**

2-conductor through terminal block; 2.5 mm²; center marking; for DIN-rail 35 x 15 and 35 x 7.5; CAGE CLAMP®; 2,50 mm²; gray

**Item No.: 280-101**

2-conductor through terminal block; 2.5 mm²; lateral marker slots; for DIN-rail 35 x 15 and 35 x 7.5; CAGE CLAMP®; 2,50 mm²; gray

**Item No.: 280-601**

2-conductor through terminal block; 2.5 mm²; lateral marker slots; for DIN-rail 35 x 15 and 35 x 7.5; CAGE CLAMP®; 2,50 mm²; gray

**Item No.: 280-681**

3-conductor through terminal block; 2.5 mm²; center marking; for DIN-rail 35 x 15 and 35 x 7.5; CAGE CLAMP®; 2,50 mm²; gray

**Item No.: 280-633**

4-conductor through terminal block; 2.5 mm²; center marking; for DIN-rail 35 x 15 and 35 x 7.5; CAGE CLAMP®; 2,50 mm²; gray

**Item No.: 280-833**

4-conductor through terminal block; 2.5 mm²; center marking; for DIN-rail 35 x 15 and 35 x 7.5; CAGE CLAMP®; 2,50 mm²; gray

**Item No.: 280-603**

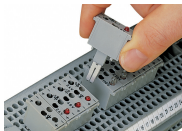
4-conductor through terminal block; 2.5 mm²; center marking; for DIN-rail 35 x 15 and 35 x 7.5; CAGE CLAMP®; 2,50 mm²; orange

**Item No.: 280-621**

4-conductor through terminal block; 2.5 mm²; lateral marker slots; for DIN-rail 35 x 15 and 35 x 7.5; CAGE CLAMP®; 2,50 mm²; gray

Installation Notes

Installation



Similar to push-in type jumpers, these LED and neon indicator modules are simply pushed into the current bar's contact slots of two adjacent through terminal blocks, providing the following advantages:

- Compatibility with all 280 Series Through Terminal Blocks
- Easy retrofits for existing systems
- Additional advantages:
 - Separation into functional and wiring levels
 - Fast replacement of other functional units