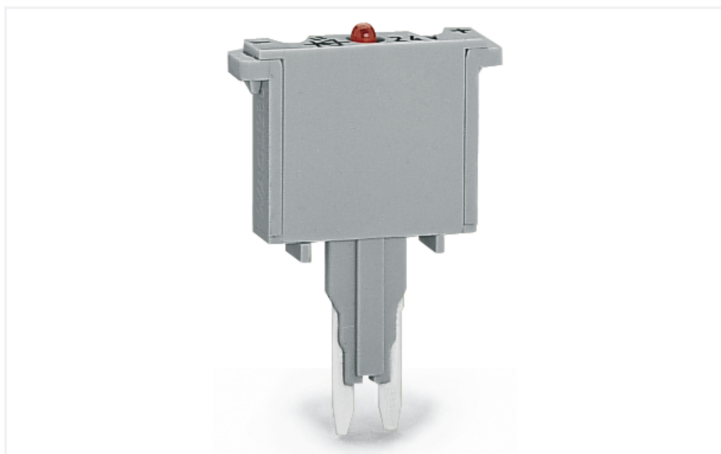


Data Sheet | Item Number: 280-850/281-415

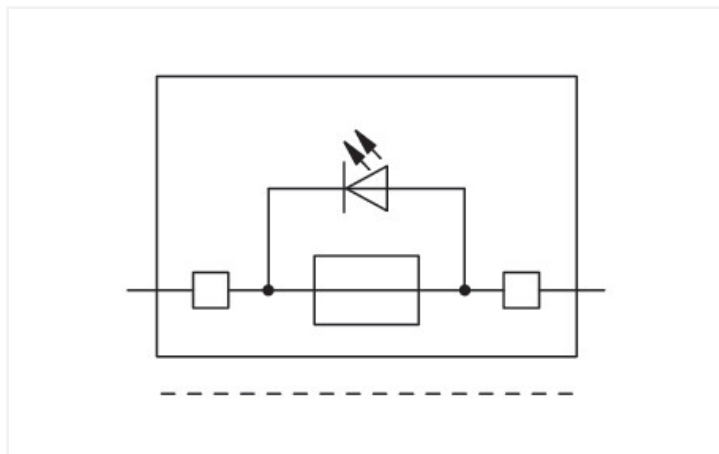
Fuse plug; with soldered miniature fuse; with indicator lamp; LED (red); AC 15 - 30 V;
250 mA FF; 5 mm wide; gray

<https://www.wago.com/280-850/281-415>



Color: ■ gray

Similar to illustration



Similar to illustration

Fuse plug, 280 Series, gray

This fuse plug (item number 280-850/281-415) provides fault-free electrical installations.

Electrical data

Ratings per IEC/EN

Nominal voltage (III/3)	125 V
Rated current	5 A
Operation status indicator	15 ... 30 V

Ratings per IEC/EN – Notes

Ratings (note)	Electrical ratings are given by the fuse and blown fuse indication.
Rated current (note)	Leakage current in case of a blown fuse: LED 5 ... 20 mA

General information

Voltage type 1	AC
Fuse type	Miniature fuse; 250 mA FF

Physical data

Width	5 mm / 0.197 inches
-------	---------------------

Mechanical data

Marking level	without marking level
---------------	-----------------------

Material data

Note (material data)	Information on material specifications can be found here
Color	gray
Material group	I
Insulation material (main housing)	Polyamide (PA66)
Flammability class per UL94	V0
Fire load	0.069 MJ
Weight	2.9 g

Environmental requirements

Processing temperature	-35 ... +85 °C
Continuous operating temperature	-60 ... +105 °C

Commercial data

Product Group	1 (Rail Mounted Terminal Blocks)
PU (SPU)	100 pcs
Packaging type	Box
Country of origin	DE
GTIN	4050821514411
Customs tariff number	85366990990

Product Classification

UNSPSC	39121626
eCl@ss 10.0	27-14-11-49
eCl@ss 9.0	27-14-11-49
ETIM 9.0	EC002018
ETIM 10.0	EC002018
ECCN	NO US CLASSIFICATION

Environmental Product Compliance

CAS-No.	7439-92-1 79-94-7
REACH Candidate List Substance	2,2',6,6'-tetrabromo-4,4'-isopropylidenediphenol Lead
RoHS Compliance Status	Compliant,With Exemption
RoHS Exemption	7(a)
SCIP notification number (Austria)	813829d2-03d5-4219-a935-dea822a7abee
SCIP notification number (Belgium)	71e6927f-d9b7-4079-bce5-b12a6c4d9bb1
SCIP notification number (Bulgaria)	ac62f059-f35b-4645-8e3d-271df8a67c98
SCIP notification number (Czech Republic)	dc4bf70c-6eb6-4b37-80b3-2798d76e82aa
SCIP notification number (Denmark)	9c59b10d-0fb1-4708-b5aa-aa86db2a996a
SCIP notification number (Finland)	49866b76-6492-4384-8883-faaf5837d1f4
SCIP notification number (France)	a62a0ab1-8f0f-4cf1-b8a0-497586343bfb
SCIP notification number (Germany)	7ddeef6a-aa62-453f-b5e9-fb006594fbc5
SCIP notification number (Hungary)	758dc9ef-7fb1-4085-89ef-ce9db425f74e
SCIP notification number (Italy)	441d895d-c3f0-4b33-88fb-aa1fa26e702f
SCIP notification number (Netherlands)	931ab888-48b5-46cb-bef1-d02fea3b1921
SCIP notification number (Poland)	dde2241c-981e-4398-9105-6828544a113f
SCIP notification number (Romania)	523d2ee4-a7c6-47d1-b0d1-15b7e23aa08a
SCIP notification number (Sweden)	6dfc4ff9-806c-445b-b332-8195cda435a9

Downloads

Environmental Product Compliance

Compliance Search

Environmental Product
Compliance
280-850/281-415



CAD/CAE-Data

CAD data

2D/3D Models
280-850/281-415



CAE data

WSCAD Universe
280-850/281-415



1 Compatible Products

1.1 Optional Accessories

1.1.1 Terminal blocks

1.1.1.1 Carrier terminal block for modules and plugs

**Item No.: 280-616**

2-conductor carrier terminal block; for DIN-rail 35 x 15 and 35 x 7.5; 2.5 mm²; CAGE CLAMP®; 2,50 mm²; gray

**Item No.: 280-916**

2-conductor carrier terminal block; for DIN-rail 35 x 15 and 35 x 7.5; 2.5 mm²; CAGE CLAMP®; 2,50 mm²; gray

**Item No.: 280-610**

3-conductor carrier terminal block; for DIN-rail 35 x 15 and 35 x 7.5; 2.5 mm²; CAGE CLAMP®; 2,50 mm²; gray

**Item No.: 280-686**

4-conductor carrier terminal block; for DIN-rail 35 x 15 and 35 x 7.5; 2.5 mm²; CAGE CLAMP®; 2,50 mm²; gray

**Item No.: 280-816**

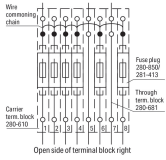
4-conductor carrier terminal block; for DIN-rail 35 x 15 and 35 x 7.5; 2.5 mm²; CAGE CLAMP®; 2,50 mm²; gray

Installation Notes



Using fuse plugs with rail-mount terminal blocks (280/281 and 769 Series) for control circuit protection is highly advantageous because the function and wiring levels are separated:

- No additional assembly and wiring costs
 - No risk of accidental contact with live parts when disconnecting the fuse plug
 - Quick plug replacement in case of a blown fuse
 - The fuse plug can be removed by service personnel
 - No unintentional reclosing of the circuit by another person
- Additional advantages:
- Terminal blocks/plugs provide ultra high-density wiring in a width of just 5 mm
 - Optional LED indicates blown fuse



Fuse protection of individual outputs;
supply via wire commencing chain