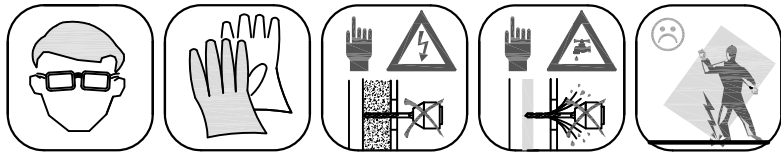


Montage Handleiding Serie ST02

Douche opstelling-ST02800



VAN RIJN PRODUCTS

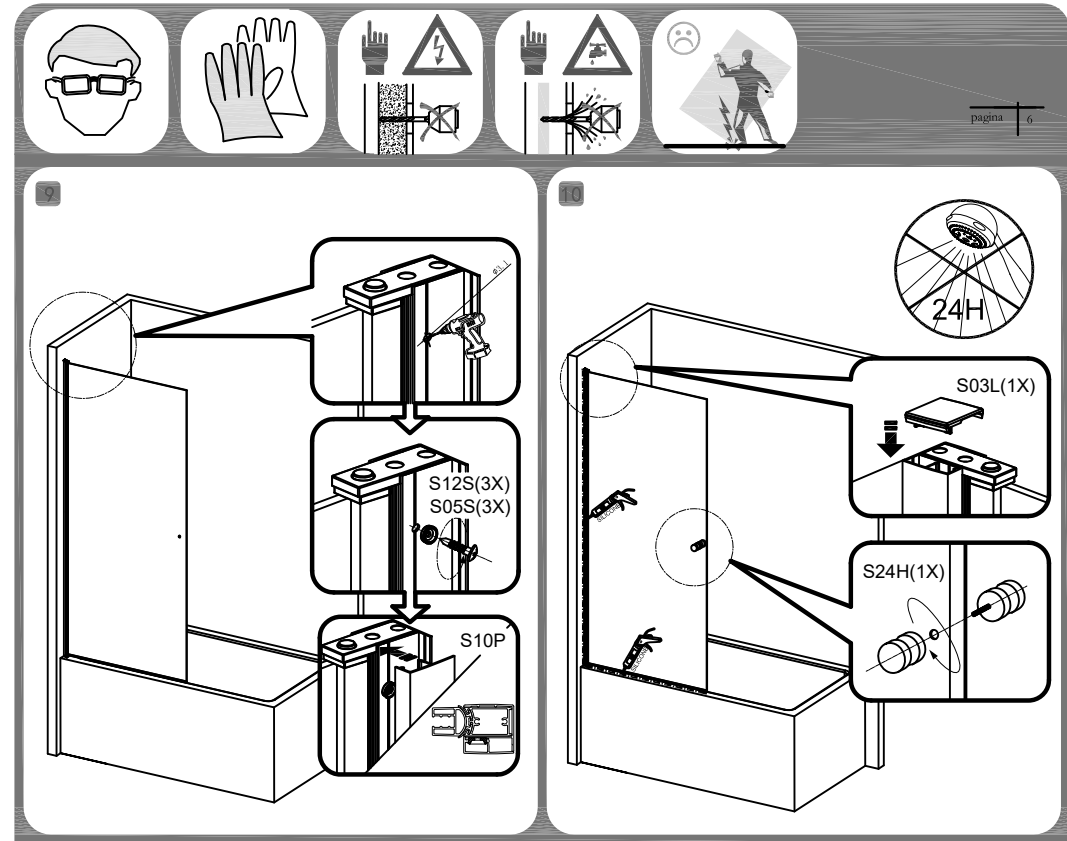
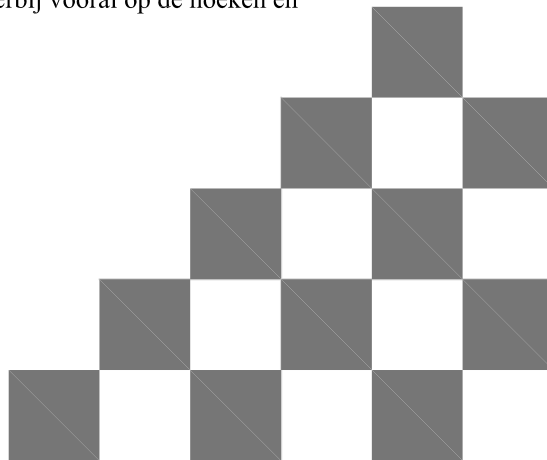


Wij danken u voor uw keuze voor één van onze doucheopstellingen en we wensen u veel plezier met uw aankoop. Lees de instructies aandachtig door voordat u begint met de montage. Niet juist naleven van de instructies kan de garantie doen vervallen.

BELANGRIJKE MEDEDELING

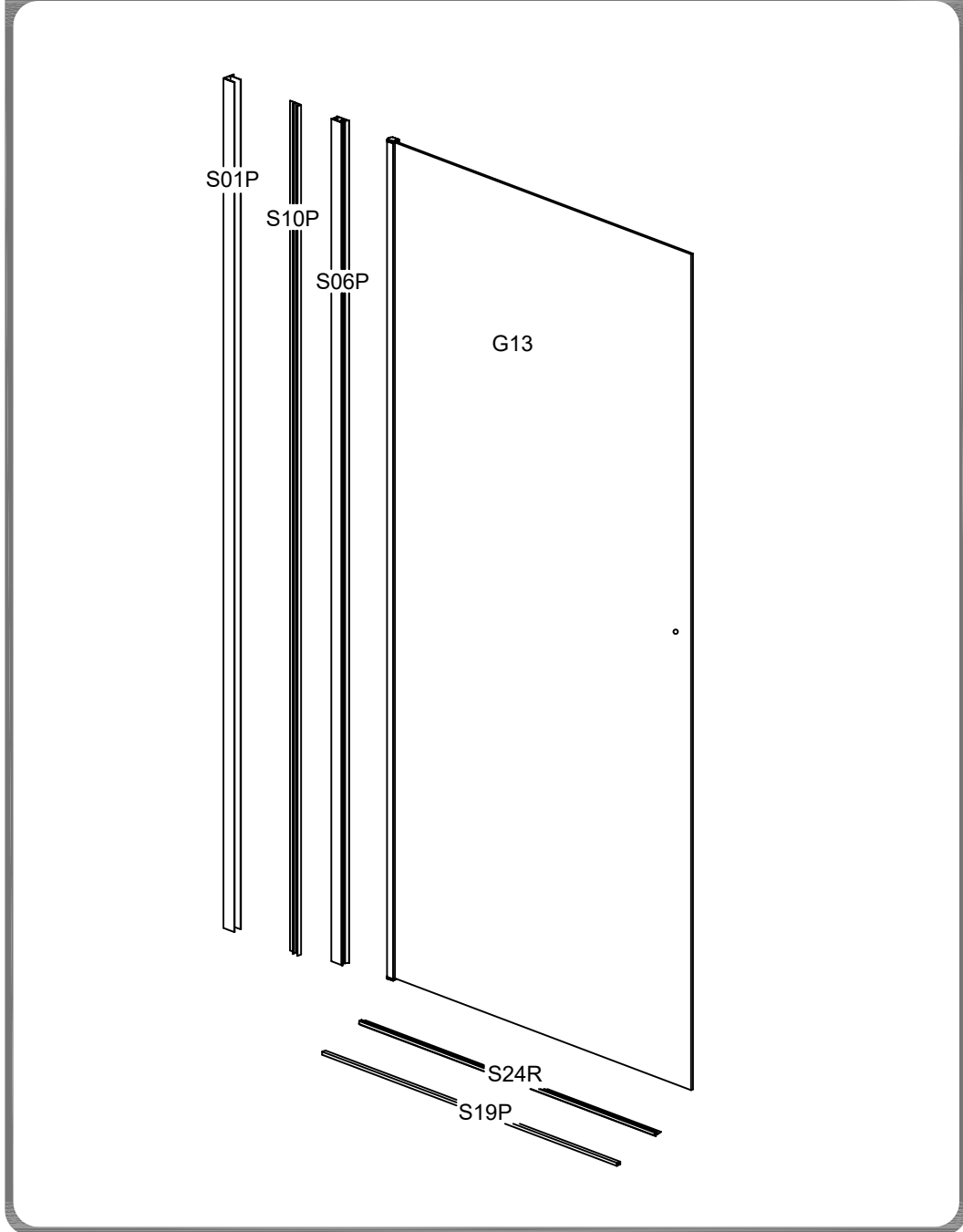
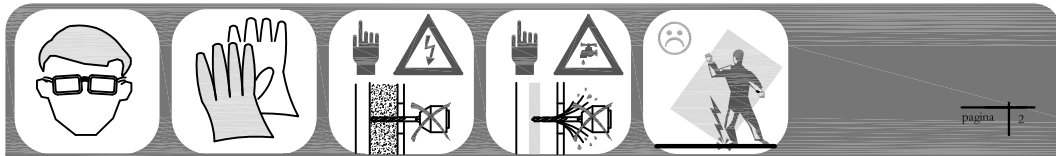
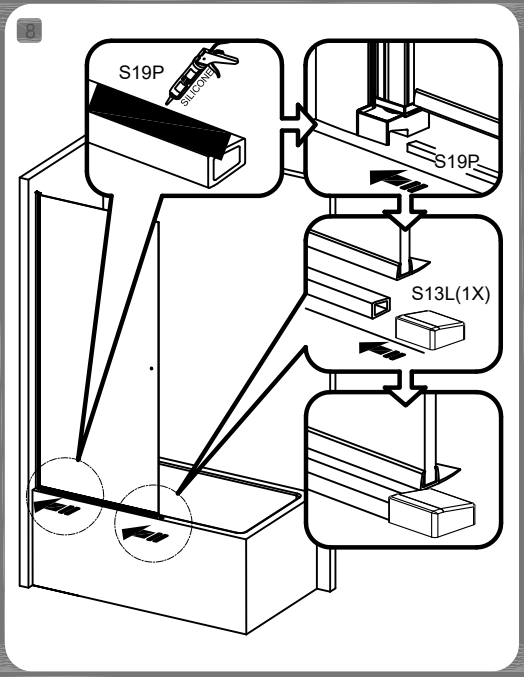
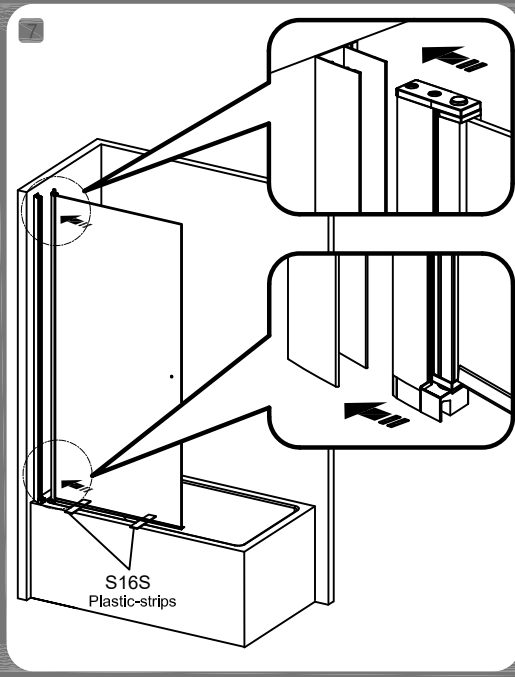
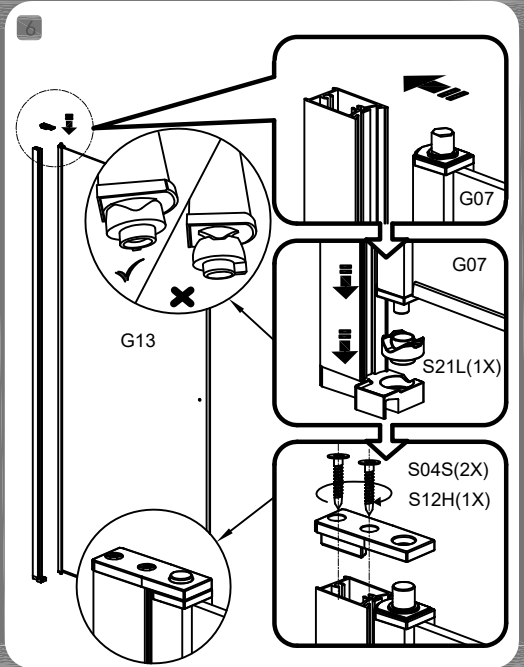
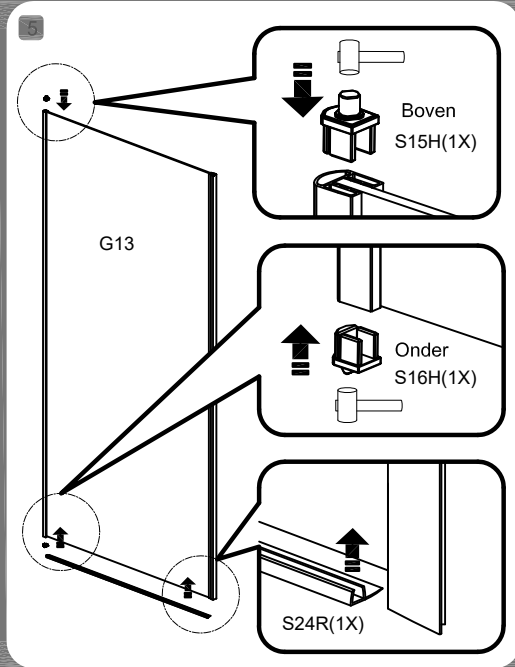
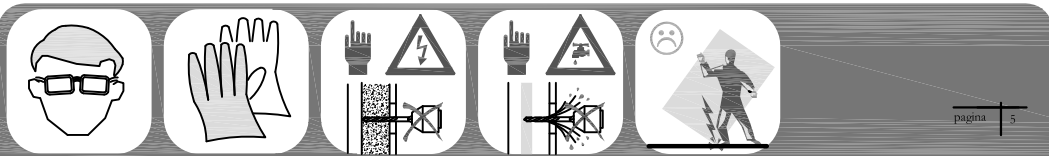
Controleer de inhoud van de verpakking op eventuele transportschade en kijk of alle onderdelen aanwezig zijn.

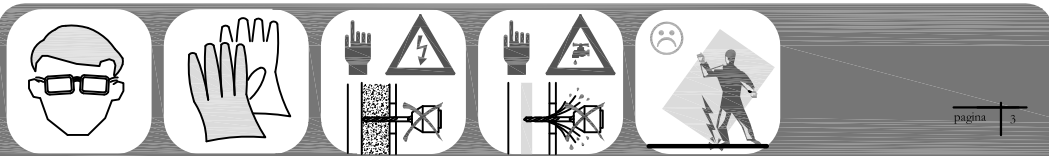
Zet het glas tijdens het uitpakken nooit direct op de grond, gebruik altijd karton of een vergelijkbaar materiaal als ondergrond. Wees voorzichtig bij het verplaatsten, let hierbij vooral op de hoeken en randen van het glas.


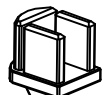
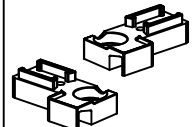
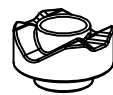
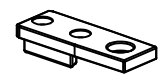

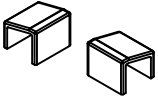
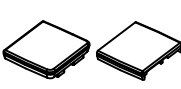
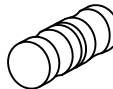
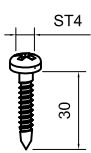
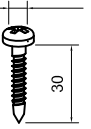
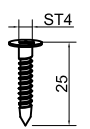
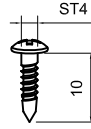
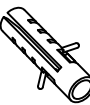
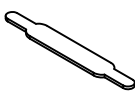



INSTRUCTIE VOOR GOED GEBRUIK EN ONDERHOUD

De douchewand moet na elk gebruik schoon gemaakt worden. Gebruik hierbij geen chemische middelen, maar een zachte doek of wisser. Gebruik nooit schuurmiddelen.





S15H  1x	S16H  1x	S10H  1x	S21L  1x	S12H  1x
S12S  3x	S13L  1x	S03L  1x	S24H  1x	S03S  3x
S02S  2x	S04S  2x	S05S  3x	S11S  3x	S16S  2x
S19S  1x				

