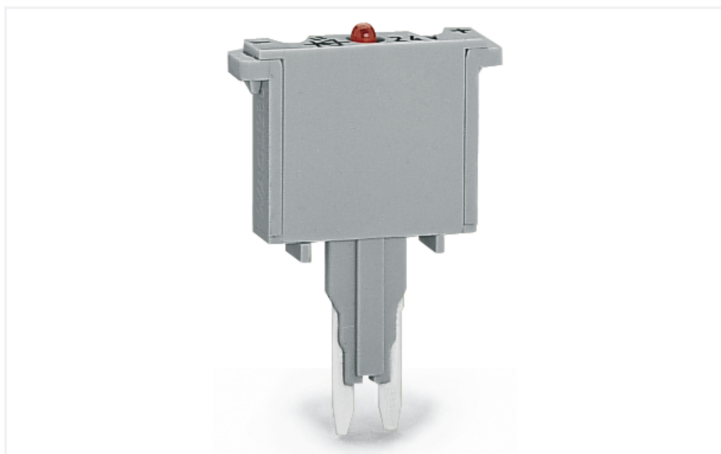


Data Sheet | Item Number: 280-856/281-414

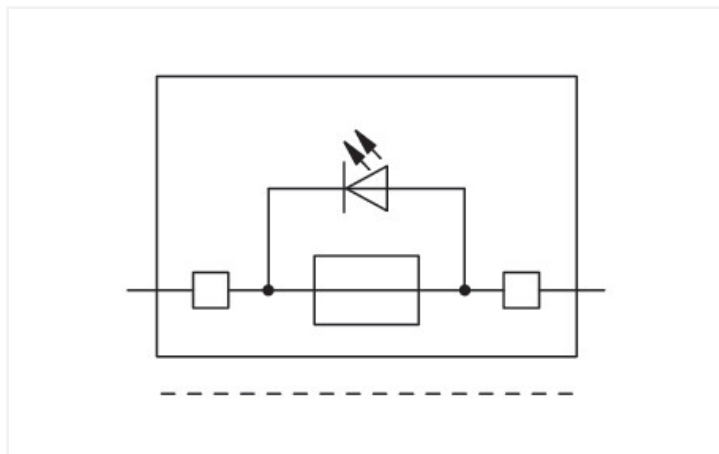
Fuse plug; with soldered miniature fuse; with indicator lamp; LED (red); DC 30 - 65 V;
2 A FF; 5 mm wide; gray

<https://www.wago.com/280-856/281-414>



Color: ■ gray

Similar to illustration



Similar to illustration

Fuse plug, 280 Series, gray

Error-free electrical installations are guaranteed with this fuse plug (item number 280-856/281-414).

Electrical data

Ratings per IEC/EN

Nominal voltage (III/3)	125 V
Rated current	5 A
Operation status indicator	30 ... 65 V

Ratings per IEC/EN – Notes

Ratings (note)	Electrical ratings are given by the fuse and blown fuse indication.
Rated current (note)	Leakage current in case of a blown fuse: LED 5 ... 20 mA

General information

Voltage type 1	DC
Fuse type	Miniature fuse; 2 A FF

Physical data

Width	5 mm / 0.197 inches
-------	---------------------

Mechanical data

Marking level	without marking level
---------------	-----------------------

Material data

Note (material data)	Information on material specifications can be found here
Color	gray
Material group	I
Insulation material (main housing)	Polyamide (PA66)
Flammability class per UL94	V0
Fire load	0.068 MJ
Weight	2.8 g

Environmental requirements

Processing temperature	-35 ... +85 °C
Continuous operating temperature	-60 ... +105 °C

Commercial data

Product Group	1 (Rail Mounted Terminal Blocks)
PU (SPU)	100 pcs
Packaging type	Box
Country of origin	DE
GTIN	4045454362775
Customs tariff number	85366990990

Product Classification

UNSPSC	39121626
eCl@ss 10.0	27-14-11-49
eCl@ss 9.0	27-14-11-49
ETIM 9.0	EC002018
ETIM 10.0	EC002018
ECCN	NO US CLASSIFICATION

Environmental Product Compliance

RoHS Compliance Status	Compliant, No Exemption
------------------------	-------------------------

Downloads

Environmental Product Compliance

Compliance Search

Environmental Product
Compliance
280-856/281-414



CAD/CAE-Data

CAD data

2D/3D Models
280-856/281-414



CAE data

WSCAD Universe
280-856/281-414



1 Compatible Products

1.1 Optional Accessories

1.1.1 Terminal blocks

1.1.1.1 Carrier terminal block for modules and plugs

**Item No.: 280-616**

2-conductor carrier terminal block; for DIN-rail 35 x 15 and 35 x 7.5; 2.5 mm²; CAGE CLAMP®; 2,50 mm²; gray

**Item No.: 280-916**

2-conductor carrier terminal block; for DIN-rail 35 x 15 and 35 x 7.5; 2.5 mm²; CAGE CLAMP®; 2,50 mm²; gray

**Item No.: 280-610**

3-conductor carrier terminal block; for DIN-rail 35 x 15 and 35 x 7.5; 2.5 mm²; CAGE CLAMP®; 2,50 mm²; gray

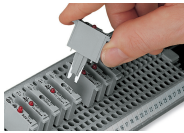
**Item No.: 280-686**

4-conductor carrier terminal block; for DIN-rail 35 x 15 and 35 x 7.5; 2.5 mm²; CAGE CLAMP®; 2,50 mm²; gray

**Item No.: 280-816**

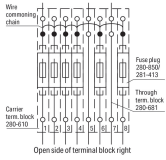
4-conductor carrier terminal block; for DIN-rail 35 x 15 and 35 x 7.5; 2.5 mm²; CAGE CLAMP®; 2,50 mm²; gray

Installation Notes



Using fuse plugs with rail-mount terminal blocks (280/281 and 769 Series) for control circuit protection is highly advantageous because the function and wiring levels are separated:

- No additional assembly and wiring costs
 - No risk of accidental contact with live parts when disconnecting the fuse plug
 - Quick plug replacement in case of a blown fuse
 - The fuse plug can be removed by service personnel
 - No unintentional reclosing of the circuit by another person
- Additional advantages:
- Terminal blocks/plugs provide ultra high-density wiring in a width of just 5 mm
 - Optional LED indicates blown fuse



Fuse protection of individual outputs;
supply via wire commencing chain