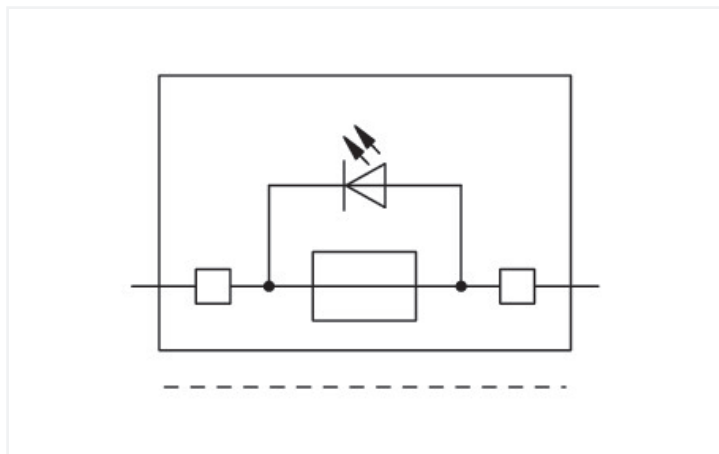
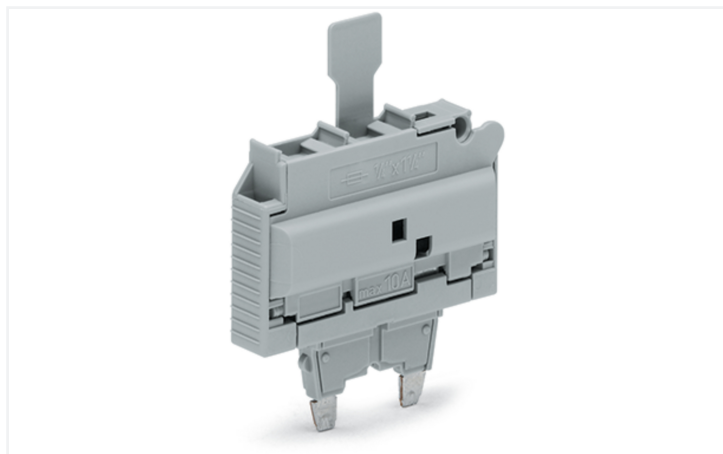


# Data Sheet | Item Number: 2006-931/1099-541

Fuse plug; with pull-tab; for glass cartridge fuse 1/4" x 1 1/4"; with indicator lamp; 12 - 30 V; 10.4 mm wide; gray

<https://www.wago.com/2006-931/1099-541>



Color: ■ gray

Fuse plug, 2006 Series, gray

Our fuse plug (item number 2006-931/1099-541) ensures effortless electrical installations.

## Electrical data

### Ratings per IEC/EN

Nominal voltage (III/3)	800 V
Rated current	10 A
Operation status indicator	12 ... 30 V
Blown fuse indication	with indicator lamp

### Ratings per IEC/EN – Notes

Ratings (note)	Electrical ratings are given by the fuse and blown fuse indication.
Rated current (note)	Leakage current in case of a blown fuse: LED 2 mA

### Ratings per IEC/EN 60947-7-3

Overvoltage category	III	III	II
Pollution degree	3	2	2
Nominal voltage	30 V	-	-
Rated impulse withstand voltage	0.8 kV	-	-
Rated current	-	-	-

### Approvals per UL 1059

Use group	B	C	D
Rated voltage	30 V	30 V	-
Rated current	15 A	15 A	-

### Approvals per CSA 22.2 No 158

Use group	B	C	D
Rated voltage	600 V	600 V	-
Rated current	15 A	15 A	-

### Power Loss

Power loss (max.) $P_{I(max)}$ (note)	When selecting glass cartridge fuses, make sure that the maximum power loss listed below is not exceeded. The power loss is determined according to IEC or EN 60947-7-3/VDE 0611-6 at 23°C. The temperature rise of the terminal block must be checked according to their application and mounting. Higher ambient temperatures represent an additional impact on miniature fuses. Therefore, in such applications, the rated current must be reduced if necessary. More details are available from the manufacturers.
---------------------------------------	--

### General information

Fuse type	Cylindrical fuse; ¼" x 1¼"
-----------	----------------------------

### Physical data

Width	10.4 mm / 0.409 inches
-------	------------------------

### Mechanical data

Marking level	Center marking
---------------	----------------

### Material data

Note (material data)	<a href="#">Information on material specifications can be found here</a>
----------------------	--

Color	gray
-------	------

Material group	I
----------------	---

Insulation material (main housing)	Polyamide (PA66)
------------------------------------	------------------

Flammability class per UL94	V0
-----------------------------	----

Fire load	0.11 MJ
-----------	---------

Weight	6.5 g
--------	-------

### Environmental requirements

Continuous operating temperature	-60 ... +105 °C
----------------------------------	-----------------

### Environmental Testing

Test specification: Railway applications – Rolling stock – Electronic equipment	DIN EN 50155 (VDE 0115-200):2022-06
--	-------------------------------------

Test procedure: Railway applications – Rolling stock equipment – Vibration and shock tests	DIN EN 61373 (VDE 0115-0106):2011-04
---	--------------------------------------

Spectrum/Mounting location	Service life test, Category 1, Class A/B
----------------------------	--

Functional test with noise-like oscillations	Test passed according to Section 8 of the standard
--	--

Frequency	$f_1 = 5 \text{ Hz}$ to $f_2 = 150 \text{ Hz}$
-----------	--

Acceleration	0.101g (highest test level used for all axes)
--------------	---

Test duration per axis	10 min.
------------------------	---------

Test directions	X, Y and Z axes
-----------------	-----------------

Monitoring of contact faults and interruptions	Passed
--	--------

Voltage drop measurement before and after each axis	Passed
---	--------

Simulated service life test through increased levels of noise-like oscillations	Test passed according to Section 9 of the standard
---	--

Frequency	$f_1 = 5 \text{ Hz}$ to $f_2 = 150 \text{ Hz}$
-----------	--

Acceleration	0.572g (highest test level used for all axes)
--------------	---

Test duration per axis	5 h
------------------------	-----

Test directions	X, Y and Z axes
-----------------	-----------------

Extended testing: Monitoring of contact faults and interruptions	Passed
--	--------

Extended testing: Voltage drop measurement before and after each axis	Passed
---	--------

Shock test	Test passed according to Section 10 of the standard
------------	---

Shock pulse form	Half sine
------------------	-----------

Acceleration	5g (highest test level used for all axes)
--------------	---

Shock duration	30 ms
----------------	-------

Number of shocks (per axis)	3 pos. und 3 neg.
-----------------------------	-------------------

### Environmental Testing

Test directions	X, Y and Z axes
Extended testing: Monitoring of contact faults and interruptions	Passed
Extended testing: Voltage drop measurement before and after each axis	Passed
Vibration and shock stress for rolling stock equipment	Passed

### Commercial data

Product Group	22 (TOPJOB S)
PU (SPU)	25 pcs
Packaging type	Box
Country of origin	DE
GTIN	4045454821104
Customs tariff number	85366990990

### Product Classification

UNSPSC	39121624
eCl@ss 10.0	27-14-11-49
eCl@ss 9.0	27-14-11-49
ETIM 9.0	EC002018
ETIM 10.0	EC002018
ECCN	NO US CLASSIFICATION

### Environmental Product Compliance

CAS-No.	1303-86-2 1317-36-8 7439-92-1
REACH Candidate List Substance	Diboron trioxide Lead Lead monoxide
RoHS Compliance Status	Compliant,With Exemption
RoHS Exemption	7(c)-I
SCIP notification number (Austria)	251bcd5c-0385-4690-a198-9204488cbca5
SCIP notification number (Belgium)	5f361190-ae8f-403b-a6c8-a6acb16c300a
SCIP notification number (Bulgaria)	1214f0be-9938-4a39-9950-407dd5d40d78
SCIP notification number (Czech Republic)	874506e9-7c68-4e57-b2c2-cb72f5e37298
SCIP notification number (Denmark)	46e68a39-7db0-4dd9-bb22-7f8f655ac737
SCIP notification number (Finland)	5aa344a9-6365-48e3-912b-3f0a06109a94
SCIP notification number (France)	ac3944c3-423f-4728-a785-ade965e9eda0
SCIP notification number (Germany)	f00765b9-336a-43df-a8cd-b0febcb0ac63e
SCIP notification number (Hungary)	288ba24e-dfae-408a-8f6a-a751377a4d38
SCIP notification number (Italy)	0b9e9a92-9fb2-4372-a7df-672fee9a04a1
SCIP notification number (Netherlands)	cab3e018-788f-49f9-9457-c7a803f5ef68
SCIP notification number (Poland)	bc840860-07a0-44fb-a4f4-87a9d74f4670
SCIP notification number (Romania)	8f2fe957-fbfb-43da-8d02-dbb36eee8a34
SCIP notification number (Sweden)	bba03e95-4c6c-4799-8f58-c12259f1d944

Approvals / Certificates

General approvals



Approval	Standard	Certificate Name
CSA CSA Group	C22.2 No. 158	1543858
UR Underwriters Laboratories Inc.	UL 1059	E45172

Declarations of conformity and manufacturer's declarations



Approval	Standard	Certificate Name
Railway WAGO GmbH & Co. KG	-	Railway Ready

Downloads

Environmental Product Compliance

Compliance Search

Environmental Product Compliance 2006-931/1099-541	<a href="#">↓</a>
--	-------------------

Documentation

Bid Text

2006-931/1099-541	19.02.2019	xml 3.00 KB	<a href="#">↓</a>
2006-931/1099-541	07.08.2018	docx 14.22 KB	<a href="#">↓</a>

CAD/CAE-Data

CAD data

2D/3D Models 2006-931/1099-541	<a href="#">↓</a>
-----------------------------------	-------------------

CAE data

WSCAD Universe 2006-931/1099-541	<a href="#">↓</a>
ZUKEN Portal 2006-931/1099-541	<a href="#">↓</a>

1 Compatible Products

1.1 Optional Accessories

1.1.1 End plate

1.1.1.1 End plate



**Item No.: 2006-1695**  
Intermediate plate; 2.9 mm wide; gray

**Item No.: 2006-1696**  
Intermediate plate; 2.9 mm wide; orange

## 1.1.2 Jumper

### 1.1.2.1 Jumper



**Item No.:** [281-503](#)

Short circuit jumper; for fuse holder; silver-colored

## 1.1.3 Marking

### 1.1.3.1 Marker



**Item No.:** [793-5501/000-006](#)

WMB marking card; as card; for terminal block width 5 - 17.5 mm; stretchable 5 - 5.2 mm; plain; snap-on type; blue



**Item No.:** [793-5501/000-014](#)

WMB marking card; as card; for terminal block width 5 - 17.5 mm; stretchable 5 - 5.2 mm; plain; snap-on type; brown



**Item No.:** [793-5501/000-007](#)

WMB marking card; as card; for terminal block width 5 - 17.5 mm; stretchable 5 - 5.2 mm; plain; snap-on type; gray



**Item No.:** [793-5501/000-023](#)

WMB marking card; as card; for terminal block width 5 - 17.5 mm; stretchable 5 - 5.2 mm; plain; snap-on type; green



**Item No.:** [793-5501/000-017](#)

WMB marking card; as card; for terminal block width 5 - 17.5 mm; stretchable 5 - 5.2 mm; plain; snap-on type; light green



**Item No.:** [793-5501/000-012](#)

WMB marking card; as card; for terminal block width 5 - 17.5 mm; stretchable 5 - 5.2 mm; plain; snap-on type; orange



**Item No.:** [793-5501/000-005](#)

WMB marking card; as card; for terminal block width 5 - 17.5 mm; stretchable 5 - 5.2 mm; plain; snap-on type; red



**Item No.:** [793-5501/000-024](#)

WMB marking card; as card; for terminal block width 5 - 17.5 mm; stretchable 5 - 5.2 mm; plain; snap-on type; violet



**Item No.:** [793-5501](#)

WMB marking card; as card; for terminal block width 5 - 17.5 mm; stretchable 5 - 5.2 mm; plain; snap-on type; white



**Item No.:** [793-5501/000-002](#)

WMB marking card; as card; for terminal block width 5 - 17.5 mm; stretchable 5 - 5.2 mm; plain; snap-on type; yellow



**Item No.:** [794-5615](#)

WMB marking card; as card; MARKED; F1, ..., F10 (10x); stretchable 5 - 5.2 mm; Vertical marking; snap-on type; white



**Item No.:** [794-5616](#)

WMB marking card; as card; MARKED; F11, ..., F20 (10x); stretchable 5 - 5.2 mm; Vertical marking; snap-on type; white



**Item No.:** [794-5617](#)

WMB marking card; as card; MARKED; F21, ..., F30 (10x); stretchable 5 - 5.2 mm; Vertical marking; snap-on type; white



**Item No.:** [794-5618](#)

WMB marking card; as card; MARKED; F31, ..., F40 (10x); stretchable 5 - 5.2 mm; Vertical marking; snap-on type; white



**Item No.:** [794-5619](#)

WMB marking card; as card; MARKED; F41, ..., F50 (10x); stretchable 5 - 5.2 mm; Vertical marking; snap-on type; white



**Item No.:** [793-501/000-006](#)

WMB marking card; as card; not stretchable; plain; snap-on type; blue



**Item No.:** [793-501/000-007](#)

WMB marking card; as card; not stretchable; plain; snap-on type; gray



**Item No.:** [793-501/000-023](#)

WMB marking card; as card; not stretchable; plain; snap-on type; green



**Item No.:** [793-501/000-017](#)

WMB marking card; as card; not stretchable; plain; snap-on type; light green



**Item No.:** [793-501/000-012](#)

WMB marking card; as card; not stretchable; plain; snap-on type; orange



**Item No.:** [793-501/000-005](#)

WMB marking card; as card; not stretchable; plain; snap-on type; red



**Item No.:** [793-501/000-024](#)

WMB marking card; as card; not stretchable; plain; snap-on type; violet



**Item No.:** [793-501](#)

WMB marking card; as card; not stretchable; plain; snap-on type; white



**Item No.:** [793-501/000-002](#)

WMB marking card; as card; not stretchable; plain; snap-on type; yellow



**Item No.:** [2009-115/000-006](#)

WMB-Inline; for Smart Printer; 1500 pieces on roll; stretchable 5 - 5.2 mm; plain; snap-on type; blue



**Item No.:** [2009-115/000-007](#)

WMB-Inline; for Smart Printer; 1500 pieces on roll; stretchable 5 - 5.2 mm; plain; snap-on type; gray



**Item No.:** [2009-115/000-023](#)

WMB-Inline; for Smart Printer; 1500 pieces on roll; stretchable 5 - 5.2 mm; plain; snap-on type; green



**Item No.:** [2009-115/000-017](#)

WMB-Inline; for Smart Printer; 1500 pieces on roll; stretchable 5 - 5.2 mm; plain; snap-on type; light green



**Item No.:** [2009-115/000-012](#)

WMB-Inline; for Smart Printer; 1500 pieces on roll; stretchable 5 - 5.2 mm; plain; snap-on type; orange



**Item No.:** [2009-115/000-024](#)

WMB-Inline; for Smart Printer; 1500 pieces on roll; stretchable 5 - 5.2 mm; plain; snap-on type; violet



**Item No.:** [2009-115](#)

WMB-Inline; for Smart Printer; 1500 pieces on roll; stretchable 5 - 5.2 mm; plain; snap-on type; white



**Item No.:** [2009-115/000-002](#)

WMB-Inline; for Smart Printer; 1500 pieces on roll; stretchable 5 - 5.2 mm; plain; snap-on type; yellow

### 1.1.3.2 Marking strip



**Item No.: 2009-110**

Marking strips; for Smart Printer; on reel; not stretchable; plain; snap-on type; white

### 1.1.4 Screwless end stop

#### 1.1.4.1 Mounting accessories



**Item No.: 249-117**

Screwless end stop; 10 mm wide; for DIN-rail 35 x 15 and 35 x 7.5; gray



**Item No.: 249-116**

Screwless end stop; 6 mm wide; for DIN-rail 35 x 15 and 35 x 7.5; gray

### 1.1.5 Terminal blocks

#### 1.1.5.1 Carrier terminal block for modules and plugs



**Item No.: 2006-1664**

2-conductor carrier terminal block; for DIN-rail 35 x 15 and 35 x 7.5; 6 mm<sup>2</sup>; Push-in CAGE CLAMP®; 6,00 mm<sup>2</sup>; blue

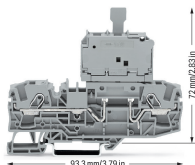


**Item No.: 2006-1661**

2-conductor carrier terminal block; for DIN-rail 35 x 15 and 35 x 7.5; 6 mm<sup>2</sup>; Push-in CAGE CLAMP®; 6,00 mm<sup>2</sup>; gray

## Installation Notes

### Installation



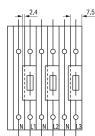
**Fuse plug dimensions**

Pivoting fuse holder with spare fuse holder

### Installation



The end plate ensures that the fuse can only be removed when the fuse plug is pulled out.



Open side of terminal block left

When using 10.4 mm wide plugs, please note:

The extra width of the plug (10.4 mm compared to 7.5 mm for carrier terminal blocks) must be compensated for with intermediate plates (2.9 mm) when building an assembly of carrier terminal blocks equipped with fuse plugs.