

Data Sheet | Item Number: 280-490

Jumper; 10-way; insulated; gray

<https://www.wago.com/280-490>



Color: ■ gray

Physical data

Width	50 mm / 1.969 inches
Height	4 mm / 0.157 inches
Jumper assignment	1-2-3-4-5-6-7-8-9-10

Material data

Note (material data)	Information on material specifications can be found here
Color	gray
Insulation material	Polyamide (PA66)
Fire load	0.032 MJ
Weight	4.9 g

Commercial data

eCl@ss 10.0	27-14-11-40
eCl@ss 9.0	27-14-11-40
ETIM 8.0	EC000489
ETIM 7.0	EC000489
PU (SPU)	50 (25) pcs
Packaging type	Box
Country of origin	DE
GTIN	4044918846097
Customs tariff number	85366990990

Environmental Product Compliance

RoHS Compliance Status	Compliant, No Exemption
------------------------	-------------------------

Downloads

Environmental Product Compliance

Compliance Search

Environmental Product Compliance 280-490



Documentation

Additional Information

Technical Section

pdf
2240.62 KB



Bid Text

280-490

27.04.2017

doc
24.00 KB



280-490

19.02.2019

xml
2.54 KB



CAD/CAE-Data

CAD data

2D/3D Models 280-490



CAE data

EPLAN Data Portal
280-490



WSCAD Universe
280-490



ZUKEN Portal 280-490



1 Compatible Products

1.1 Optional Accessories

1.1.1 Tool

1.1.1.1 Operating tool

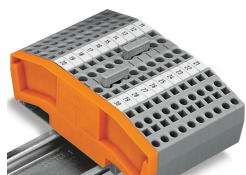


Item No.: 280-440

Operating tool; made of insulating material; 10-way

Installation Notes

Commoning



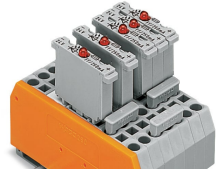
Commoning using comb-style jumper bars.
Push comb-style jumper bars down until fully inserted.

Commoning



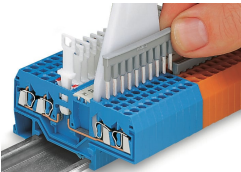
4-conductor through terminal blocks, angled type, formation of groups with 3-way, comb-style jumper bars

Commoning



Carrier terminal blocks with component plugs, alternate comb-style jumper bars, 3-way comb-style jumper bar

Commoning



Commoning front-entry disconnect terminal blocks via comb-style jumper bar using a 10-pole operating tool