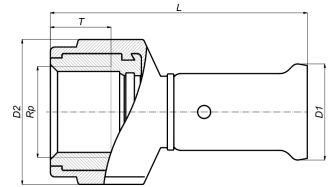


## 18PK-4006: Straight female adapter 40x1"



### Commercial information

PVDF press fittings in combination with multilayer pipe, a completely corrosion-free system. The synthetic press fittings are made from injection moulded PVDF (Polyvinylidene fluoride)\*. PVDF offers the user a unique combination of properties:

- Highly resistant to pressure and temperature
- Excellent mechanical strength
- Extreme flexibility: bending up to 10° is possible
- Perfectly suited for drinking water and food
- Highly resistant to chemicals and corrosion
- Embedding is possible without extra protection

#### Basic unit dimensions

Height	46 mm
Length	75 mm
Width	46 mm
Net weight	0.170 kg

#### Certificates

ATG, QB (CSTBat), DVGW Wasser, ETA, KIWA, ÖVGW Wasser, SINTEF, WRAS, KOMO, STF, ÖN EN 21003-2/-3, GOST-R, ITC, TSU, AFNOR, PZH, ACS, DNV-GL, Aenor, Sans 21003, RISE, EMI

#### Applications

Potable water, Heating, Compressed air, Cooling, Sanitary

#### Solutions

Building installations, Industry, Utility, Shipbuilding

## Technical characteristics

Material	Kunststof/messing	Bend radius	0 Millimetre
Material connection 1	Polyvinylidene fluoride (PVDF)	Outer pipe diameter connection 1	40 Millimetre
Material quality	Polyvinylidene fluoride (PVDF)	Length	74.5 Millimetre
Material quality connection 1	Polyvinylidene fluoride (PVDF) (expired)	Length of connection 1	42 Millimetre
Surface protection connection 1	Untreated	Working length connection 1	6 Millimetre
Surface treatment connection 1	Untreated	Length of connection 2	32.5 Millimetre
Material connection 2	Brass	Working length connection 2	15 Millimetre
Material quality connection 2	CuZn40Pb2 (CW617N)	Wrench width	0 Millimetre
Surface protection connection 2	Untreated	Wrench width union nut	0 Millimetre
Surface treatment connection 2	Untreated	Medium temperature (continuous)	-10 70 Degrees celsius
Shape	Straight	Max. operating pressure at 20 °C	10 Bar
Reducing	✘	Standard Dimension Ratio (SDR)	0
Eccentric	✘		
System specific	✓		
Connection 1	Press sleeve		
Contour code connection 1	BE		
Nominal diameter connection 2	1 inch (25)		
Connection 2	Internal thread cylindrical BSPP-G (ISO 228-1)		
Main colour fitting	Black		
Material sealing	Ethylene-propylene diene monomer rubber (EPDM)		
With buffer stud	✓		
High tensile strength	✘		
With thermal insulation	✘		
Ring stiffness class	Other		
With sealing rings/gaskets	✓		
Capped	✘		
With drain valve	✘		
With de-aerator	✘		
FM quality mark	✘		
LPCB quality mark	✘		
ULC quality mark	✘		
UL quality mark	✘		
DIN-CERTCO certificate	✘		
VdS quality mark	✘		
With approval for TÜV	✘		
DVGW quality mark for gas	✘		
DVGW quality mark for water	✓		
KIWA certified	✓		
Gastec QA mark	✘		
KOMO certified	✓		
Type approval according to BBR/EKS	✘		