

REPORT

18 SERIES PIR movement and presence detectors



Constant light
regulation



Wide detection
range



HVAC
management



User manual

Movement detector specifically for corridors with KNX interface Type 18.4K.9.030.0001

- Supply voltage via KNX bus
- Sensing area 30 meters length and 4 meters width
- Two detection areas: right and left
- Surface or recessed ceiling mounting
- Dynamic light regulation

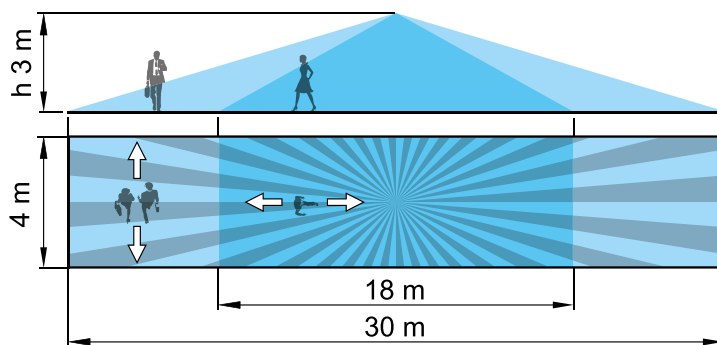




Movement detector specifically for corridors with KNX interface Type 18.4K.9.030.0001

- Sensing area 30 meters length and 4 meters width
- Two detection areas: right and left
- Constant light regulation
- Logic gates
- Up to 5 outputs (datapoint) for load control (Lighting, HVAC etc.)
- Adjustment of PIR sensitivity
- 1 output (datapoint) – master/slave detection
- Selectable function to inhibit ambient light threshold control
- Reporting of light level and movement status (for security purposes)
- Detection of movement direction
- Surface or recessed ceiling mounting
- Suitable for ETS 4 (or latest versions)

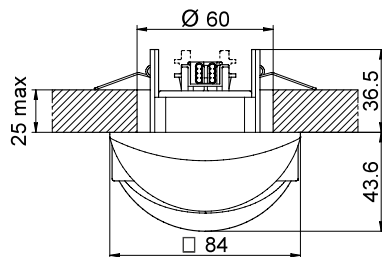
Detection area



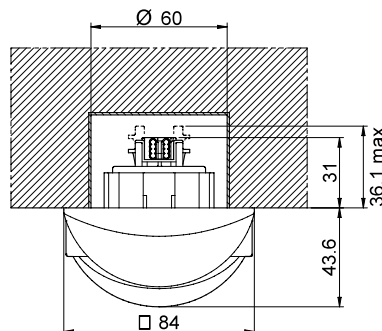
NEWS

- Constant light regulation
- Brightness sensor calibration
- Up to 5 logic outputs
- HVAC management
- Logic gates

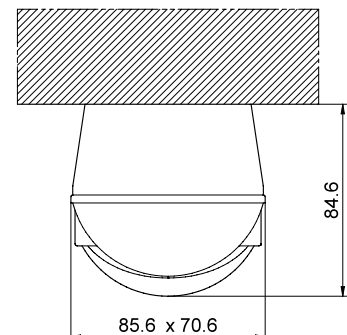
Suspended ceiling mounting



Recess mounting



Surface mounting



The **KNX bus system** and standard allows the realisation of flexible control systems to achieve energy-efficiency and comfort in the home or commercial buildings.

KNX complies with:

- European Standards (CENELEC EN 50090 and CEN EN 13321-1)
- International Standard (ISO/IEC 14543-3)
- Chinese Standard (GB/T 20965)
- US Standard (ANSI/ASHRAE 135)