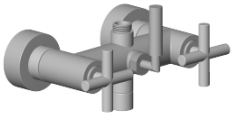


**Connection for bath wall-mounting 200 x 215 x 140 mm - Dark Chrome**

**SPARE PARTS**

04 17 10 020 01 Product version from 4/1/2025



	Dark Chrome	04 17 10 020 01-19
	Chrome	04 17 10 020 01-00
	Brushed Platinum	04 17 10 020 01-06
	Platinum	04 17 10 020 01-08
	Matte White	04 17 10 020 01-10
	Brushed Light Gold (PVD)	04 17 10 020 01-27
	Brushed Durabrass (23kt Gold)	04 17 10 020 01-28
	Matte Black	04 17 10 020 01-33
	Brushed Dark Brass (PVD)	04 17 10 020 01-39
	Brushed Bronze (PVD)	04 17 10 020 01-42
	Brushed Champagne (22kt Gold)	04 17 10 020 01-46
	Champagne (22kt Gold)	04 17 10 020 01-47
	Brushed Chrome	04 17 10 020 01-93
	Brushed Dark Platinum	04 17 10 020 01-99



## Connection for bath wall-mounting 200 x 215 x 140 mm - Dark Chrome

SPARE PARTS

04 17 10 020 01 Product version from 4/1/2025



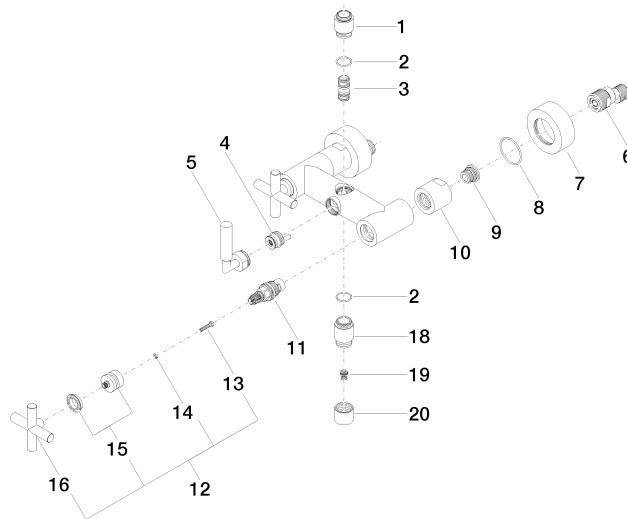
## Connection for bath wall-mounting 200 x 215 x 140 mm - Dark Chrome

SPARE PARTS

04 17 10 020 01 Product version from 4/1/2025

04 17 10 020 01 Product version from 4/1/2025

Parts for other finishes can be found here: [Chrome](#)



**Spare parts list**

No.	Item Number	Name	Quantity used	Delivery time
4	90 15 01 005 00 90	Diverter Insert Strainer waste 20 x 30 x 20 mm -	1.00	14
8	09 14 10 034 90	O-Ring EPDM 70 38,0 x 2,0 mm -	2.00	14
1	09 24 03 090 20-19	Nipple Ø 25 x 32,5 mm - Dark Chrome	1.00	40
15	90 12 12 007 00-19	Handle Socket retainer Ø 29 x 26 mm - Dark Chrome	2.00	40
5	90 18 20 025 00-19	Diverter 23 x 85 x 48 mm - Dark Chrome	1.00	40
14	90 30 11 029 00 90	Connection Spring lock washer Ø 4 -	2.00	14
2	90 14 10 032 00 90	O-Ring 18,1 x 1,6 mm -	2.00	14
13	90 30 30 075 00 90	Mounting Cylinder head screw with hexagon socket Low profile M4 x 20 mm -	2.00	14
6	04 11 04 030 00 90	S-connection with sound damper and seal 1 pair G1/2 x G3/4 -	2.00	14
9	04 29 05 014 00 90	Connection M18 x 1,5 -	2.00	14
17	09 24 03 121-19	Nipple Ø 24,7 x 34,5 mm - Dark Chrome	1.00	40
18	09 23 01 131 90	Back-flow preventer without limitation Ø 10 x 10,5 mm -	1.00	14
16	09 20 89 010-19	Handle 70 x 70 x 22,5 mm - Dark Chrome	2.00	-
Spare part can no longer be ordered, please order the replacement item				
	90208901010-19	Handle TARA - Dark Chrome		
10	09 23 10 064-19	Mounting Ø 38 x 34 mm - Dark Chrome	2.00	40
12	90 20 89 010 10-19	Handle TARA - Dark Chrome	2.00	40
7	09 27 89 103-19	Rosette Ø 65 x 25 mm - Dark Chrome	2.00	40
3	90 21 10 011 00 90	Diverter TARA incl. eccentric -	1.00	14
19	09 21 02 143-19	Cover Ø 24,7 x 20 mm - Dark Chrome	1.00	40
11	90 90 03 131 00 90	Head part clockwise closing 1/2" -	2.00	14