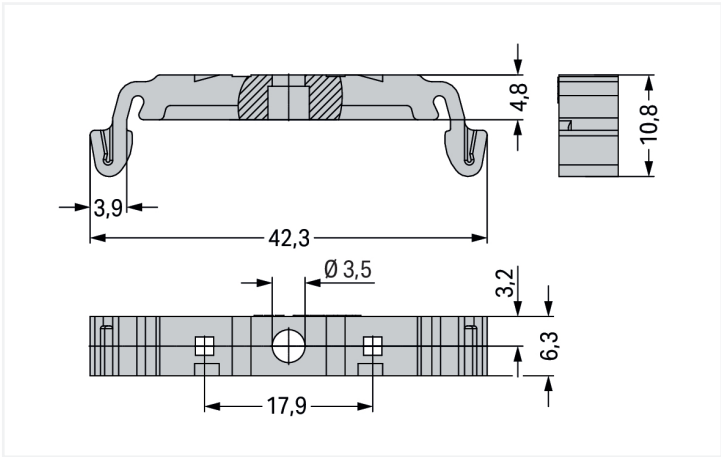




Color: ■ gray



Dimensions in mm

**Technical data**

Mounting type	DIN-35 rail
---------------	-------------

**Mechanical data**

Suitable	for male headers with snap-in mounting feet (2091 and 2092 Series)
----------	--

**Material data**

Color	gray
Material group	I
Insulation material (main housing)	Polyamide (PA66)
Flammability class per UL94	V0
Fire load	0.036 MJ
Weight	1.2 g



Commercial data		
Product Group	2 (Terminal Block Accessories)	
eCl@ss 10.0	27-14-11-92	
eCl@ss 9.0	27-14-11-92	
ETIM 9.0	EC002848	
ETIM 8.0	EC002848	
PU (SPU)	500 (25) pcs	
Packaging type	Box	
Country of origin	CH	
GTIN	4050821279730	
Customs tariff number	39269097900	

Environmental Product Compliance		
RoHS Compliance Status	Compliant,No Exemption	

Downloads

Environmental Product Compliance

Compliance Search

Environmental Product Compliance 209-189

↓

Documentation

Additional Information

Technical Section

03.04.2019

pdf

2027.26 KB

↓

CAD/CAE-Data

CAD data

2D/3D Models 209-189

↓

CAE data

ZUKEN Portal 209-189

↓