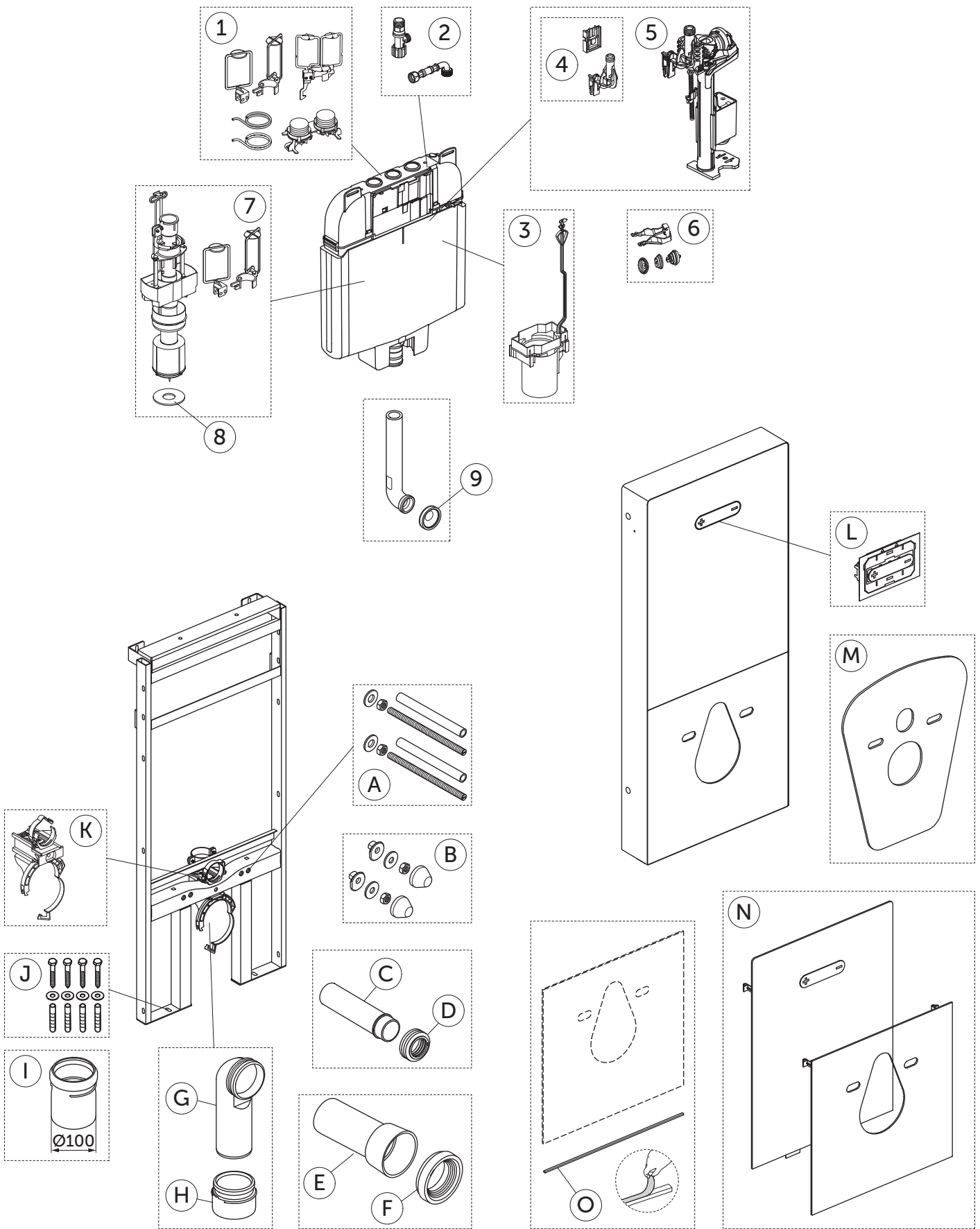


SPARE PARTS

PROSYS NeoX
Sanitary Module



SPARE PARTS

PROSYS NeoX
Sanitary Module

Item	Code	Description
1	R014967	Prosys 80 Pneumatic Conversion Kit
2	RV30667	NeoX Stop Valve & flexible hose
3	RV29967	Prosys 80 Outlet Valve Guide
4	RV30767	NeoX Inlet Valve Support
5	RV31067	NeoX Complete Inlet Valve and Support
6	RV20367	Maintenance kit for SmartValve
7	RV15167	Prosys Outlet Valve For 80 & 2.0
8	RV15567	Prosys Outlet Valve Seal for 150, 80, ECO & 2.0 (PK x 10)
9	RV21867	Prosys Flush Pipe Seal 150,80 & ECO Dry Wall Frame (PKx5)
A	RV27167	Prosys WC Bowl Fixation Rods M12 x 2
B	R0201AC	Prosys WC Fixings Protective Caps White
	R0201AA	Prosys WC Fixings Protective Caps Chrome
C	RV19967	Prosys Flush Pipe 180mm x Ø45 & Seal
D	RV26767	Prosys Flush Pipe connection to WC Q40/45 (PK x 5)
E	RV18267	Prosys WC connection pipe Ø90x250
F	RV18367	Prosys Rubber Seal for WC bowl Ø125
G	RV18067	Prosys Outlet Bend Ø90 x Ø90mm
H	RV18167	Prosys outlet bend adaptor Ø90/110
I	RV21767	Prosys outlet bend adaptor Ø90/100 PVC
J	RV17867	Prosys Wall & Floor Fixation Screws (x4) For Standard Dry Wall WC Frames
K	RV19267	Prosys 80 Outlet Bend Support Bracket for Dry Wall WC Frame
L	RV308MY	NeoX Pneumatic Push Button
M	R017467	Prosys Acoustic Insulation WC/Bidet
N	RV198A6	NeoX Replacement Glass Panels Black
	RV198AC	NeoX Replacement Glass Panels White
O	RV30967	NeoX Bottom Glass Profile & Seal

Ideal Standard International NV
Corporate Village – Gent Building
Da Vincilaan 2
B1935 – Zaventem
Belgium



BE +32 (0)228 521 580
BG +359 675 30362
DE +49 (0)228 521 580
EG +202 26969700
FR +33 (0)1 49 38 28 00
GB 01482 496 318
GR +30 210 67 90 810
HR +38591 22 99 304

HU +36 30 6991 594
IT 800 652 290
ME +971 4 804 2400
NL +31 (0)77 355 08 08
PL +48 71 7868 301/302
RO +40 21 3223 201/202
SI 00386 59 919040
TR +90 216 314 87 87

UA +359 675 30 468
AL/XK/BA +359 887 709 696
CZ/SK +420 417 592 179
DK/NO/SE +45 75 84 10 10
ES/PT +34 93 561 80 00
LV/LT/EE +371 673 57 792
RS/MK/ME +381 11 713 80 58
RU/MD +7 495 669 23 11



Ideal Standard