

META Single-lever bath mixer for wall mounting without shower set - Brushed Platinum

META

33 200 660 Product version from 7/1/2023

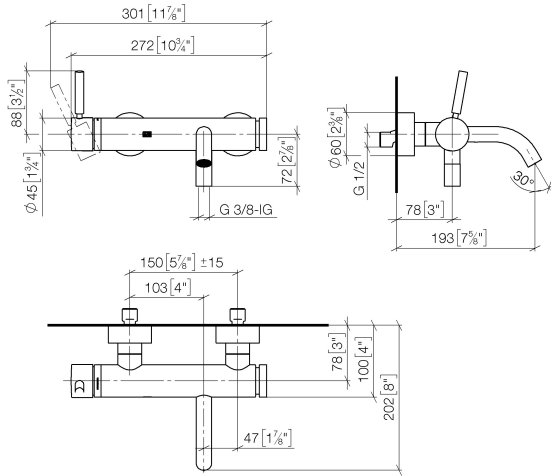


- 202mm projection
- circular normal flow
- automatic bath/shower diverter
- 3/8" shower outlet
- slide-on rosettes Ø 60 mm
- 1/2" connection
- gauge 150 mm - 15 mm
- max. flow 14 l/min at 3 bar flow pressure
- WRAS

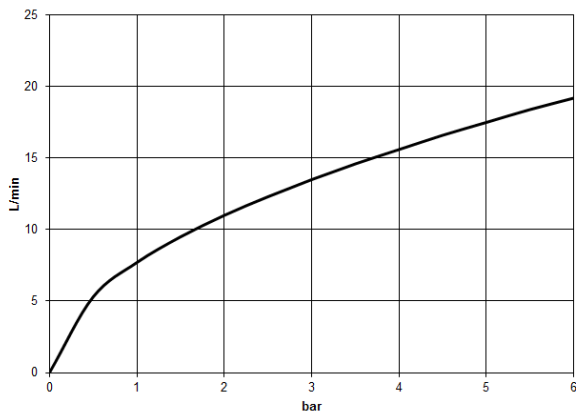
Intrinsic protection against back flow.

	Brushed Platinum	33 200 660-06
	Chrome	33 200 660-00
	Dark Chrome	33 200 660-19
	Light Gold (PVD)	33 200 660-26
	Brushed Light Gold (PVD)	33 200 660-27
	Matte Black	33 200 660-33
	Brushed Gold (PVD)	33 200 660-37
	Brushed Dark Brass (PVD)	33 200 660-39
	Brushed Bronze (PVD)	33 200 660-42
	Brushed Dark Bronze (PVD)	33 200 660-43
	Brushed Chrome	33 200 660-93
	Brushed Dark Platinum	33 200 660-99

33 200 660 Product version from 7/1/2023
mm [inches]



Flow rate chart



Codes & Standards

DIN 4109

EN 1717

ISO 3822

Scottish Water
Byelaws

UK Water Supply
Regulations

Ü-Zeichen



META Single-lever bath mixer for wall mounting without shower set - Brushed
Platinum

META

33 200 660 Product version from 7/1/2023

Certificates and sustainability

Belgaqua_21-025-2 LGA_29

WRAS_2207

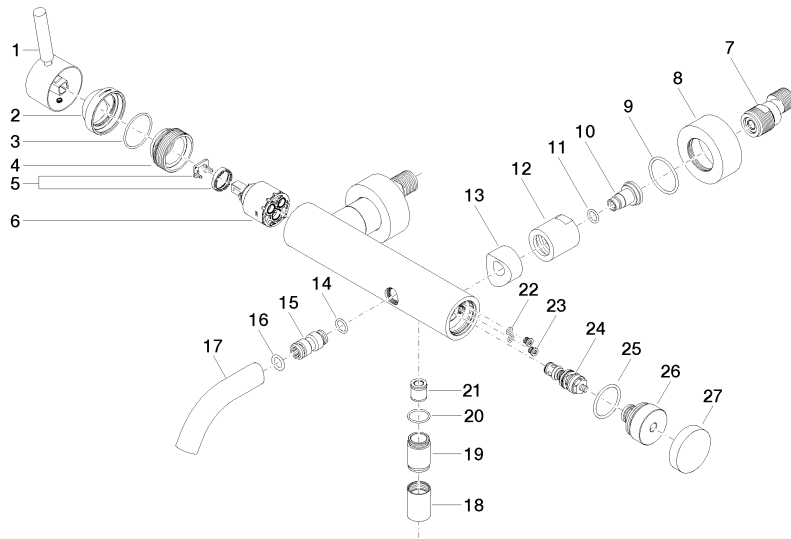
EPD-DOR-20230287 Belgaqua_25-338-2
-IBA1-EN
Environmental.prod
uct-declarat

META Single-lever bath mixer for wall mounting without shower set - Brushed
Platinum

META

33 200 660 Product version from 7/1/2023

Parts for other
finishes can be found
here: [Chrome](#)



META Single-lever bath mixer for wall mounting without shower set - Brushed Platinum

META

33 200 660 Product version from 7/1/2023

Spare parts list

No.	Item Number	Name	Quantity used	Delivery time
11	09 14 10 008 90	O-Ring 10,0 x 2,0 mm -	2.00	14
6	90 15 05 064 00 90	Single-lever mixer cartridge Ø 35 mm x 58,6 mm -	1.00	-
Spare part can no longer be ordered, please order the replacement item				
	9015050460090	Single-lever mixer cartridge Ø 35 mm x 58,6 mm -		
23	09 30 30 113 20 90	Mounting Ø 8 x 6,5 mm -	2.00	14
8	09 27 62 004-06	Rosette Ø 60 x 25 mm - Brushed Platinum	2.00	-
Spare part can no longer be ordered, please order the replacement item				
10	09 29 05 005 20 90	nipple	2.00	82
13	09 18 40 059-06	Connection Spacer Ø 33 x 23 mm - Brushed Platinum	2.00	-
Spare part can no longer be ordered, please order the replacement item				
25	09 14 10 101 90	O-Ring EPDM 70 30,0 x 2,5 mm -	1.00	14
24	90 31 09 032 00-06	Diverter for bath mixer Ø 20 x 50 mm - Brushed Platinum	1.00	20
5	90 28 10 148 00 90	Temperature limitation ring -	1.00	14
18	90 21 02 069 00-06	Cover/sleeve M20 x 1 - Brushed Platinum	1.00	20
16	90 14 10 011 00 90	O-Ring EPDM 70 11,0 x 2,5 mm -	1.00	14
19	09 24 03 115 20-06	Nipple Ø 22 x 33 mm - Brushed Platinum	1.00	20
1	90 20 66 007 00-06	Handle Lever 52 x 35 x 117 mm - Brushed Platinum	1.00	20
12	09 23 10 048-06	Mounting Ø 33 x 34 mm - Brushed Platinum	2.00	20
22	09 14 10 001 90	O-Ring EPDM 70 4,5 x 1,5 mm -	2.00	14
26	09 21 10 035 20-06	Diverter for bath wall-mounting Ø 37 x 34,5 mm - Brushed Platinum	1.00	20
20	90 14 10 032 00 90	O-Ring 18,1 x 1,6 mm -	1.00	14
3	09 14 10 102 90	O-Ring 33,05 x 1,78 mm -	1.00	14
17	90 11 06 213 00-06	Spout 90 x 145 x 35 mm, 22 l/min. - Brushed Platinum	1.00	20
21	90 23 01 141 00 90	Back-flow preventer -	1.00	14
27	09 20 62 031-06	Pull button Ø 45 x 10 mm - Brushed Platinum	1.00	-
Spare part can no longer be ordered, please order the replacement item				
9	09 14 10 119 90	O-Ring EPDM 70 33,0 x 2,5 mm -	2.00	14
15	09 24 04 043 90	Nipple Ø 17 x 36 mm -	1.00	14
2	09 28 30 032-06	Cover Ø 45 x 22,7 mm - Brushed Platinum	1.00	20
4	09 24 04 296 90	Cartridge Cartridge screw connection Ø 40 x 20 mm -	1.00	14
14	09 14 10 003 90	O-Ring EPDM 70 11,0 x 2,0 mm -	1.00	14
7	04 11 04 030 00 90	S-connection with sound damper and seal 1 pair G1/2 x G3/4 -	2.00	14