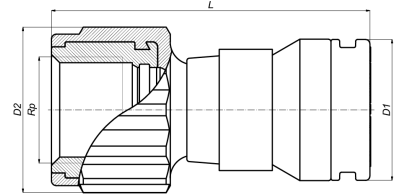


18SK-2606: Straight female adapter 26x1"



Commercial information

The construction of the push fitting shows that Henco Vision is the result of sophisticated product development. All of its components have been made with the greatest precision and are manufactured from the best materials. Henco Vision push fittings are made from a high-quality synthetic material with a unique range of properties:

- Extremely resistant to pressure and temperature.
 - Outstanding mechanical strength.
 - Enormous flexibility: can bend up to 10° at 95°C.
 - Perfectly suitable for drinking water and foods Henco Vision push fittings can be used for both sanitary and heating applications.
- Ease of use - fast assembly: The Henco push fitting guarantees an extremely fast and reliable connection. All you need to make a perfect connection is a pipe cutter and a calibrator. Pressing tools are not required. You only need to follow three steps for a fast and reliable connection, in combination with the Henco PE-Xc/AL/PE-Xc multilayer pipe.

Basic unit dimensions

Height	46 mm
Length	72 mm
Width	46 mm
Net weight	0.144 kg

Certificates

ETA, SINTEF, STF, GOST-R, TSU, ATG, RISE, ACS, PZH, EMI

Applications

Potable water, Heating, Cooling, Sanitary

Solutions

Building installations, Industry, Utility

Technical characteristics

Material	Kunststof/messing	Bend radius	0 Millimetre
Material connection 1	Polyvinylidene fluoride (PVDF)	Outer pipe diameter connection 1	26 Millimetre
Material quality	Polyvinylidene fluoride (PVDF)	Length	72 Millimetre
Material quality connection 1	Polyvinylidene fluoride (PVDF) (expired)	Wrench width	0 Millimetre
Surface protection connection 1	Untreated	Wrench width union nut	0 Millimetre
Surface treatment connection 1	Untreated	Medium temperature (continuous)	-10 70 Degrees celsius
Material connection 2	Brass	Max. operating pressure at 20 °C	10 Bar
Surface protection connection 2	Untreated	Standard Dimension Ratio (SDR)	0
Surface treatment connection 2	Untreated		
Shape	Straight		
Reducing	✘		
Eccentric	✘		
System specific	✓		
Connection 1	Insert (push-fitting)		
Nominal diameter connection 2	1 inch (25)		
Connection 2	External thread conical BSPT-R (ISO 7-1 / EN 10226-1)		
Main colour fitting	White		
Material sealing	Ethylene-propylene diene monomer rubber (EPDM)		
With buffer stud	✓		
High tensile strength	✘		
With thermal insulation	✘		
Ring stiffness class	Other		
With sealing rings/gaskets	✓		
Capped	✘		
With drain valve	✘		
With de-aerator	✘		
FM quality mark	✘		
LPCB quality mark	✘		
ULC quality mark	✘		
UL quality mark	✘		
DIN-CERTCO certificate	✘		
VdS quality mark	✘		
With approval for TÜV	✘		
DVGW quality mark for gas	✘		
DVGW quality mark for water	✘		
KIWA certified	✘		
Gastec QA mark	✘		
KOMO certified	✘		
Type approval according to BBR/EKS	✘		