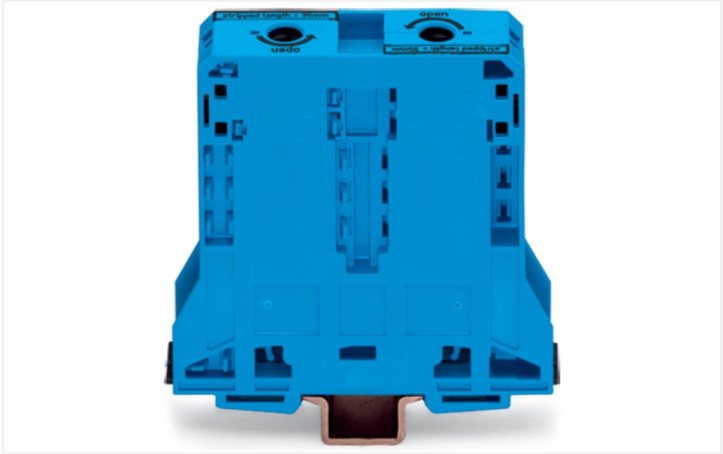
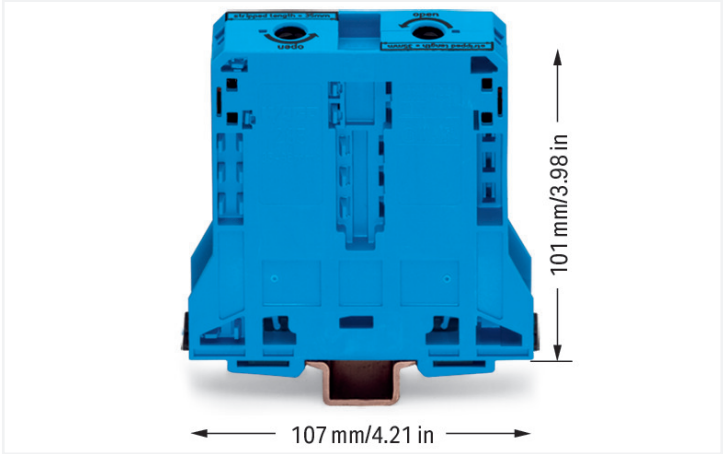


**Data Sheet | Item Number: 285-194**

2-conductor through terminal block; 95 mm²; lateral marker slots; only for DIN 35 x 15 rail; POWER CAGE CLAMP; 95,00 mm²; blue

<https://www.wago.com/285-194>



Color: ■ blue

Through terminal block, 285 Series, t-wrench und 8 mm

Our through terminal block (item number 285-194) is the ideal way to connect conductors quickly and securely. Ensure that the strip lengths are 35 mm when connecting conductors to this through terminal block. This product features conductor terminals and utilizes POWER CAGE CLAMP. The POWER CAGE CLAMP is a powerful, maintenance-free, and universal way to connect large conductor cross-sections. It's also suitable for all conductor types. The clamping point can be locked open and you do not need to use a torque wrench or prepare the conductor in any way, e.g., by crimping the ferrule. Depending on the type of conductor, this through terminal block is ideal for conductor cross sections ranging from 25 mm² to 95 mm². It features one level and two clamping points that you can use to connect a single potential. The blue housing is made of polyamide (PA66) for insulation. These high-current terminal blocks are mounted using DIN-rails 35 x 15..

Electrical data				
Ratings per		IEC/EN 60947-7-1		
Overvoltage category		III	III	II
Pollution degree		3	2	2
Nominal voltage		1000 V	-	-
Rated surge voltage		12 kV	-	-
Rated current		232 A	-	-
Ratings per IEC/EN 2				
Rated voltage (III/3)		1500 V		
Rated impulse withstand voltage (III/3)		12 kV		
Approvals per		UL 1059		
Use group		B	C	D
Rated voltage		600 V	600 V	-
Rated current		200 A	200 A	-
Approvals per		CSA 22.2 No 158		
Use group		B	C	D
Rated voltage		1000 V	1000 V	-
Rated current		210 A	-	-
Power Loss				
Power loss, per pole (potential)		7.5354 W		
Rated current I <sub>N</sub> for specified power loss		232 A		
Resistance value for specified, current-dependent power loss		0.00014 Ω		
General information				
Voltage type 1		AC/DC		
Voltage type 2		DC		



Connection data																								
Clamping units	2	<div>Connection 1</div> <table><tr><td>Connection technology</td><td>POWER CAGE CLAMP</td></tr><tr><td>Actuation type</td><td>T-wrench; 8 mm</td></tr><tr><td>Connectable conductor materials</td><td>Copper</td></tr><tr><td>Nominal cross-section</td><td>95 mm²</td></tr><tr><td>Solid conductor</td><td>25 ... 95 mm² / 4 ... 4/0 AWG</td></tr><tr><td>Stranded conductor</td><td>25 ... 95 mm² / 4 ... 4/0 AWG</td></tr><tr><td>Fine-stranded conductor</td><td>25 ... 95 mm² / 4 ... 4/0 AWG</td></tr><tr><td>Fine-stranded conductor; with insulated ferrule</td><td>25 ... 95 mm² / 4 ... 4/0 AWG</td></tr><tr><td>Fine-stranded conductor; with uninsulated ferrule</td><td>25 ... 95 mm² / 4 ... 4/0 AWG</td></tr><tr><td>Strip length</td><td>35 mm / 1.38 inches</td></tr><tr><td>Wiring direction</td><td>Side-entry wiring</td></tr></table>	Connection technology	POWER CAGE CLAMP	Actuation type	T-wrench; 8 mm	Connectable conductor materials	Copper	Nominal cross-section	95 mm²	Solid conductor	25 ... 95 mm² / 4 ... 4/0 AWG	Stranded conductor	25 ... 95 mm² / 4 ... 4/0 AWG	Fine-stranded conductor	25 ... 95 mm² / 4 ... 4/0 AWG	Fine-stranded conductor; with insulated ferrule	25 ... 95 mm² / 4 ... 4/0 AWG	Fine-stranded conductor; with uninsulated ferrule	25 ... 95 mm² / 4 ... 4/0 AWG	Strip length	35 mm / 1.38 inches	Wiring direction	Side-entry wiring
Connection technology	POWER CAGE CLAMP																							
Actuation type	T-wrench; 8 mm																							
Connectable conductor materials	Copper																							
Nominal cross-section	95 mm²																							
Solid conductor	25 ... 95 mm² / 4 ... 4/0 AWG																							
Stranded conductor	25 ... 95 mm² / 4 ... 4/0 AWG																							
Fine-stranded conductor	25 ... 95 mm² / 4 ... 4/0 AWG																							
Fine-stranded conductor; with insulated ferrule	25 ... 95 mm² / 4 ... 4/0 AWG																							
Fine-stranded conductor; with uninsulated ferrule	25 ... 95 mm² / 4 ... 4/0 AWG																							
Strip length	35 mm / 1.38 inches																							
Wiring direction	Side-entry wiring																							
Total number of potentials	1																							
Number of levels	1																							
Number of jumper slots	2																							

Physical data		
Width	25 mm / 0.984 inches	
Height	107 mm / 4.213 inches	
Depth from upper-edge of DIN-rail	101 mm / 3.976 inches	

Mechanical data		
Mounting type	DIN-rail 35 x 15	
Mounting (note)	only suitable for DIN 35 x 15 rail	
Marking level	Side marking	

Material data		
Note (material data)	<a href="#">Information on material specifications can be found here</a>	
Color	blue	
Material group	I	
Insulation material (main housing)	Polyamide (PA66)	
Flammability class per UL94	V0	
Fire load	3.532 MJ	
Weight	263.2 g	

Environmental requirements		
Processing temperature	-35 ... +85 °C	
Continuous operating temperature	-60 ... +105 °C	

Commercial data		
Product Group	1 (Rail Mounted Terminal Blocks)	
eCl@ss 10.0	27-14-11-20	
eCl@ss 9.0	27-14-11-20	
ETIM 9.0	EC000897	
ETIM 8.0	EC000897	
PU (SPU)	5 pcs	
Packaging type	Box	
Country of origin	PL	
GTIN	4044918452533	
Customs tariff number	85369010000	



Environmental Product Compliance	
RoHS Compliance Status	Compliant,No Exemption

Approvals / Certificates

General approvals			Declarations of conformity and manufacturer's declarations		
Approval	Standard	Certificate Name	Approval	Standard	Certificate Name
CCA DEKRA Certification B.V.	EN 60947	NTR NL-7707	EU-Declaration of Confor- mity WAGO GmbH & Co. KG	-	-
CSA DEKRA Certification B.V.	C22.2 No. 158	154112	UK-Declaration of Confor- mity WAGO GmbH & Co. KG	-	-
KEMA/KEUR DEKRA Certification B.V.	EN 60947	71-105562			
UL Underwriters Laboratories Inc.	UL 1059	E45172			

Approvals for marine applications

Approval	Standard	Certificate Name
ABS American Bureau of Ship- ping	EN 60947	20-HG1941090-PDA
BV Bureau Veritas S.A.	EN 60947	07436/F0 BV
DNV GL Det Norske Veritas, Ger- manischer Lloyd	-	TAE00001V2
LR Lloyds Register	EN 60947	91/20112 (E9)

Downloads

Environmental Product Compliance	
Compliance Search	
Environmental Product Compliance 285-194	

Documentation

Additional Information				Bid Text			
Technical Section	pdf	2246.92 KB		285-194	19.02.2019	xml 3.23 KB	
				285-194		doc 23.50 KB	
					04.01.2018		



CAD/CAE-Data	
<div>CAD data</div> <div>2D/3D Models 285-194</div> <div>↓</div>	<div>CAE data</div> <div>EPLAN Data Portal 285-194</div> <div>↓</div>
	<div>WSCAD Universe 285-194</div> <div>↓</div>
	<div>ZUKEN Portal 285-194</div> <div>↓</div>

1 Compatible Products
1.1 Optional Accessories
1.1.1 Cover
1.1.1.1 Cover



**Item No.: 285-169**  
Finger guard; touchproof cover protects unused conductor entries and jumper slots; for 95 mm² high-current tbs; yellow

1.1.2 Current and voltage tap
1.1.2.1 Current and voltage tap



**Item No.: 855-951/250-000**  
Current and voltage tap up to 95 mm²; Primary rated current: 250 A; Secondary rated current: 1 A; Rated power: 0.2 VA; Accuracy class: 0.5; fused

1.1.3 DIN-rail
1.1.3.1 Mounting accessories



**Item No.: 210-198**  
Copper carrier rail; 35 x 15 mm; 2.3 mm thick; 2 m long; unslotted; according to EN 60715; copper-colored



**Item No.: 210-508**  
Steel carrier rail; 35 x 15 mm; 1.5 mm thick; 2 m long; slotted; galvanized; similar to EN 60715; silver-colored



**Item No.: 210-197**  
Steel carrier rail; 35 x 15 mm; 1.5 mm thick; 2 m long; slotted; similar to EN 60715; silver-colored



**Item No.: 210-506**  
Steel carrier rail; 35 x 15 mm; 1.5 mm thick; 2 m long; unslotted; galvanized; similar to EN 60715; silver-colored



**Item No.: 210-114**  
Steel carrier rail; 35 x 15 mm; 1.5 mm thick; 2 m long; unslotted; similar to EN 60715; silver-colored



1.1.4 Ferrule

1.1.4.1 Ferrule



**Item No.: 216-435**  
Ferrule; Sleeve for 50 mm² / AWG 1; unin-  
sulated; electro-tin plated; electrolytic  
copper; gastight crimped; acc. to DIN  
46228, Part 1/08.92

1.1.5 Installation

1.1.5.1 Mounting accessories



**Item No.: 285-168**  
Fixing element; for 95 mm² high-current  
terminal blocks; orange



**Item No.: 249-197**  
Screwless end stop; 14 mm wide; for DIN-  
rail 35 x 15 and 35 x 7.5; gray

1.1.6 Jumper

1.1.6.1 Jumper



**Item No.: 285-495**  
Jumper; insulated; gray

1.1.7 Marking

1.1.7.1 Group marker carrier



**Item No.: 249-105**  
Group marker carrier; gray

1.1.7.2 Marker



**Item No.: 793-5501/000-006**  
WMB marking card; as card; for terminal  
block width 5 - 17.5 mm; stretchable 5 -  
5.2 mm; plain; snap-on type; blue



**Item No.: 793-5501/000-014**  
WMB marking card; as card; for terminal  
block width 5 - 17.5 mm; stretchable 5 -  
5.2 mm; plain; snap-on type; brown



**Item No.: 793-5501/000-007**  
WMB marking card; as card; for terminal  
block width 5 - 17.5 mm; stretchable 5 -  
5.2 mm; plain; snap-on type; gray



**Item No.: 793-5501/000-023**  
WMB marking card; as card; for terminal  
block width 5 - 17.5 mm; stretchable 5 -  
5.2 mm; plain; snap-on type; green



**Item No.: 793-5501/000-017**  
WMB marking card; as card; for terminal  
block width 5 - 17.5 mm; stretchable 5 -  
5.2 mm; plain; snap-on type; light green



**Item No.: 793-5501/000-012**  
WMB marking card; as card; for terminal  
block width 5 - 17.5 mm; stretchable 5 -  
5.2 mm; plain; snap-on type; orange



**Item No.: 793-5501/000-005**  
WMB marking card; as card; for terminal  
block width 5 - 17.5 mm; stretchable 5 -  
5.2 mm; plain; snap-on type; red



**Item No.: 793-5501/000-024**  
WMB marking card; as card; for terminal  
block width 5 - 17.5 mm; stretchable 5 -  
5.2 mm; plain; snap-on type; violet



**Item No.: 793-5501**  
WMB marking card; as card; for terminal  
block width 5 - 17.5 mm; stretchable 5 -  
5.2 mm; plain; snap-on type; white



**Item No.: 793-5501/000-002**  
WMB marking card; as card; for terminal  
block width 5 - 17.5 mm; stretchable 5 -  
5.2 mm; plain; snap-on type; yellow



**Item No.: 793-501/000-006**  
WMB marking card; as card; not stretcha-  
ble; plain; snap-on type; blue



**Item No.: 793-501/000-007**  
WMB marking card; as card; not stretcha-  
ble; plain; snap-on type; gray



1.1.7.2 Marker



**Item No.: 793-501/000-023**  
WMB marking card; as card; not stretchable; plain; snap-on type; green



**Item No.: 793-501/000-017**  
WMB marking card; as card; not stretchable; plain; snap-on type; light green



**Item No.: 793-501/000-012**  
WMB marking card; as card; not stretchable; plain; snap-on type; orange



**Item No.: 793-501/000-005**  
WMB marking card; as card; not stretchable; plain; snap-on type; red



**Item No.: 793-501/000-024**  
WMB marking card; as card; not stretchable; plain; snap-on type; violet



**Item No.: 793-501**  
WMB marking card; as card; not stretchable; plain; snap-on type; white



**Item No.: 793-501/000-002**  
WMB marking card; as card; not stretchable; plain; snap-on type; yellow



**Item No.: 2009-115/000-006**  
WMB-Inline; for Smart Printer; 1500 pieces on roll; stretchable 5 - 5.2 mm; plain; snap-on type; blue



**Item No.: 2009-115/000-007**  
WMB-Inline; for Smart Printer; 1500 pieces on roll; stretchable 5 - 5.2 mm; plain; snap-on type; gray



**Item No.: 2009-115/000-023**  
WMB-Inline; for Smart Printer; 1500 pieces on roll; stretchable 5 - 5.2 mm; plain; snap-on type; green



**Item No.: 2009-115/000-017**  
WMB-Inline; for Smart Printer; 1500 pieces on roll; stretchable 5 - 5.2 mm; plain; snap-on type; light green



**Item No.: 2009-115/000-012**  
WMB-Inline; for Smart Printer; 1500 pieces on roll; stretchable 5 - 5.2 mm; plain; snap-on type; orange



**Item No.: 2009-115/000-005**  
WMB-Inline; for Smart Printer; 1500 pieces on roll; stretchable 5 - 5.2 mm; plain; snap-on type; red



**Item No.: 2009-115/000-024**  
WMB-Inline; for Smart Printer; 1500 pieces on roll; stretchable 5 - 5.2 mm; plain; snap-on type; violet



**Item No.: 2009-115**  
WMB-Inline; for Smart Printer; 1500 pieces on roll; stretchable 5 - 5.2 mm; plain; snap-on type; white



**Item No.: 2009-115/000-002**  
WMB-Inline; for Smart Printer; 1500 pieces on roll; stretchable 5 - 5.2 mm; plain; snap-on type; yellow

1.1.7.3 Marker carrier



**Item No.: 285-442**  
Adaptor; gray

1.1.8 Power tap

1.1.8.1 Power tap



**Item No.: 285-407**  
Power tap; for 95 mm² high-current tbs; gray

1.1.9 Protective warning marker

1.1.9.1 Cover



**Item No.: 285-170**  
Protective warning marker; with high-voltage symbol; black; yellow



**Item No.: 285-175**  
Protective warning marker; yellow

1.1.10 Tool

1.1.10.1 Operating tool



Item No.: 285-172  
Allen wrench; with a partially insulated shaft; green

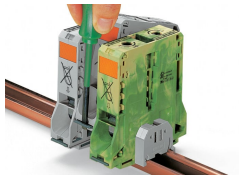
Item No.: 285-173  
Allen wrench; with a partially insulated shaft; with anti-rotation protection; green

Installation Notes

Installation



Snapping a terminal block onto DIN-rail (to the left or to the right).



Removing a terminal block from the assembly (to the left or to the right).

Conductor termination

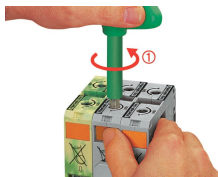


For the optimal clamping force:

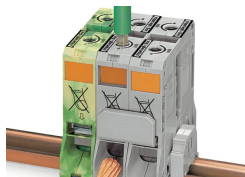
- Bend conductor
- Cut conductor to length (conductor end must be straight)
- Strip conductor



Always observe the on-unit printed strip length guide!



**Conductor termination – step 1:**  
Rotate the T-wrench counter-clockwise to the stop . Next, push in the orange locking tab. The clamp is locked open for hands-free wiring.

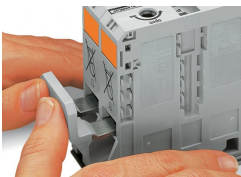


**Conductor termination – step 2:**  
Insert a stripped conductor into the clamping unit until it hits the backstop. Hold in this position.

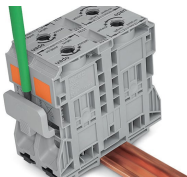


**Conductor termination – step 3:**  
A short counter-clockwise rotation releases the tab. When unlocked, the T-wrench rotates clockwise, securely clamping the conductor.

Commoning



Commoning with an adjacent jumper: insert the jumper above the conductor entry hole – prior to conductor termination. The nominal cross-section remains unchanged.



Removing jumper via operating tool.

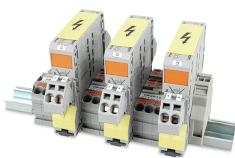
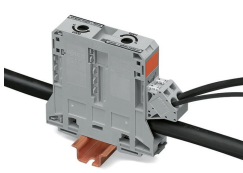
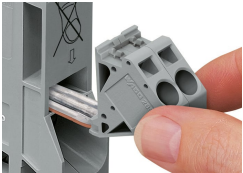
Cover



Protective warning marker may indicate:  
Notice: Power is still on even after switching off the main switch!

Yellow, detachable finger guards provide touch-proof safety by shielding jumper contact slots and/or unused conductor entries.

Power tap



Easily and consistently tap directly into the power supply. Insert the unwired tap before opening the clamping unit.

The power taps enable the distribution of the L1, L2 and L3 potentials. The warning covers and finger guards ensure IP20 touch-proof protection.

Current and voltage tap



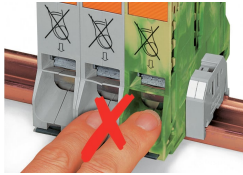
Installation via jumper slot

Feedthrough for primary conductors

Push-in CAGE CLAMP® connection technology

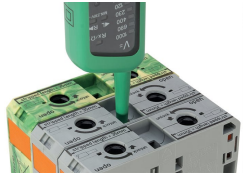
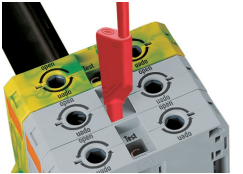
Integrated fuse

Security



Risk of Injury!  
Do not insert fingers in the conductor entry!

Testing

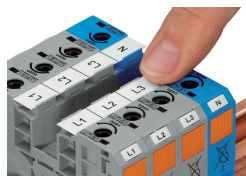


Testing via touch-proof 4 mm Ø test plugs (not available from WAGO, but offered by industry suppliers such as, Multi-Contact Deutschland GmbH).

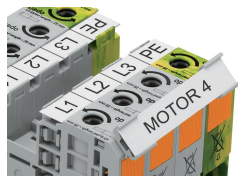
Testing  
Voltage measurements can be performed, e.g., using a 2-pole voltage tester (Item No. 206-707).



## Marking



WMB markers or self-adhesive, printable marking strips can be accommodated on 35, 50 and 95 mm<sup>2</sup> high-current terminal blocks.



Marker carrier (Item No. 285-442) for marking strips (Item No. 2009-110) or 2 WMB markers for 285-13x, 285-15x and 285-19x Terminal Blocks