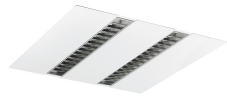


RANA NEO Recessed 600 SylSmart

RANA NEO 3300LM REC 600x600 830 SSC 2L WHITE
0052580



Product features

- Ceiling Recessed LED Linear luminaire (lay-in), with Louvre + MPO diffuser, Direct Light Distribution, Luminaire Dimensions: 595x595x52mm, Sylvania White body colour, IP20, IK07, SylSmart Standalone capable, Low LED flicker (+/-5%), Warm White (3000K), LED Colour Temperature, 3350lm, 31W, 108lm/W, CRI>80, 3 SDCM (3-step MacAdam ellipse) LED Colour Consistency, UGR<15, Luminance at 65° < 3000 cd/m2, Lifespan: 96,000 hours L80B20, Glow Wire Test 850°C, Quick and easy electrical connection with direct access to push-connectors on top, 2 x metallic safety cables (1.5m) included, the luminaire can be covered with building insulation of Glass Wool type.

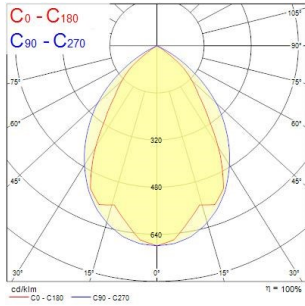


PRODUCT OVERVIEW

| | |
|-----------------------------------|--|
| Product name | RANA NEO 3300LM REC 600x600 830 SSC 2L WHITE |
| Technology | LED (3 SDCM) |
| Cap/Base | N/A |
| Housing | Steel |
| Mount | Ceiling recessed mounting |
| General application | Education, Office |
| ETIM Class | EC002892 |
| Warranty | 5 years |
| Useful luminous flux (Fuse) | 3350 |
| Fixture luminous flux (lm) | 3350 |
| Luminous flux (lm) | 3350 |
| Luminaire efficacy (lm/W) | 108 |
| Correlated colour temperature (k) | 3000 |
| Light colour | Warm White |
| CRI (Ra) | 80 |
| Colour Variation Initial (SDCM) | SDCM3 |
| Glare control | < 15 |
| Photobiological Risk Group | RG0 |
| Total power consumption (W) | 31 |
| Electrical protection | Class I |
| Control gear type | LED driver constant current |
| Dimmable | Yes |
| Dimming method | SylSmart SSC |
| LED Flickering Rate | Ultra low (5% or less) |
| Housing colour | RAL 9016 - Traffic white / Bezel |
| IP rating | IP20 |
| IK rating | IK07 |
| Product EAN number | 5410288525808 |

PHOTOMETRY

RANA NEO Recessed 600 SylSmart *RANA NEO 3300LM REC 600x600 830 SSC 2L WHITE* 0052580



| | | | |
|-----|--------------|----------------------------|--------------------|
| 0.5 | 0.89 0.87 | E(0°) E(90°) E(180°) | 926 900 926 |
| 1.0 | 1.78 1.33 | E(0°) E(90°) E(180°) | 2272 476 667 |
| 1.5 | 2.66 2.00 | E(0°) E(90°) E(180°) | 1010 212 292 |
| 2.0 | 3.55 2.67 | E(0°) E(90°) E(180°) | 666 119 164 |
| 2.5 | 4.44 3.33 | E(0°) E(90°) E(180°) | 364 79 109 |
| 3.0 | 5.33 4.00 | E(0°) E(90°) E(180°) | 253 65 73 |

Distance [m] Cone diameter [m] Illuminance [lx]

— C0 - C180 (Half beam angle: 41.4°)
 — C90 - C270 (Half beam angle: 33.2°)

TECHNICAL DRAWINGS

