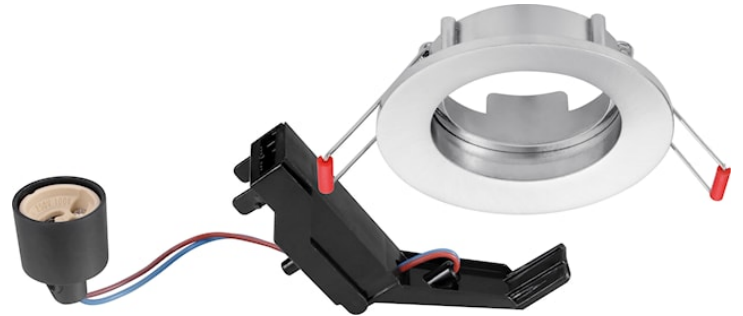


# INSET TREND 62 FL ES50 BN EX-LMP

Item No: 3083560

**SYLVANIA**

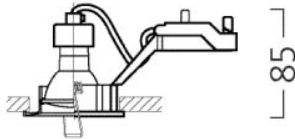
**PRO**



62mm cut out. Fixed. Round bezel. Brushed Nickel

## Technical Assets

### Dimensions (mm)



┌ 62 ┐  
┌ 78 ┐

62 Flush  
minimum recess dimensions:  
200x200x85mm

### Photometrics

# INSET TREND 62 FL ES50 BN EX-LMP

Item No: 3083560



## General data

Product name	INSET TREND 62 FL ES50 BN EX-LMP
Technology	LED/Halogen
Cap/Base	GU10
Housing	Aluminium
Mount	Ceiling recessed mounting
Environment	Indoor
General application	Hospitality, Residential & Consumer
ETIM Class	EC001744
E-number SE	7464260
Warranty	3 years

## Optical data

LOR (%)	Dependent on lamp
Light colour	N/A
Adjustable chromaticity	N

## Electrical data

Light source included	Fixture without Lightsource
Primary Supply/Product voltage - min (V)	230
Primary Supply/Product voltage - max (V)	240
Electrical protection	Class II
Nominal Frequency (Hz)	50/60Hz

## Physical data

Housing colour	Nickel
IP rating	IP20
IK rating	IK02
Nominal Product Length (mm)	82
Nominal Product Width (mm)	82
Nominal Product Height (mm)	85
Weight (kg)	0.104
Recessed Depth (mm)	85

## Packaging

Product EAN number	8711971835608
Packaging single length / height (cm)	13.3
Packaging single width (cm)	10.17
Packaging single depth (cm)	7.0
DUN14 (inner)	18711971835605
Units per outer package	30
Packaging outer length / height (cm)	24.1
Packaging outer width (cm)	29.0
Packaging outer depth (cm)	53.4