

30 805 875 Product version from 10/1/2024



- 500mm projection
- pivoting spout
- laminar flow
- cold water only
- max. flow 5.7 l/min at 3 bar flow pressure
- min. recess depth 125 mm
- max. recess depth 80 mm
- lead-free
- This product can help a building meet the requirements of Green Building Rating Systems, e.g. LEED®, BREEAM®, DGNB
- WRAS

	Chrome	30 805 875-00
	Brushed Platinum	30 805 875-06
	Platinum	30 805 875-08
	Dark Chrome	30 805 875-19
	Brushed Durabronze (23kt Gold)	30 805 875-28
	Brushed Dark Brass (PVD)	30 805 875-39
	Brushed Bronze (PVD)	30 805 875-42
	Brushed Dark Bronze (PVD)	30 805 875-43
	Brushed Champagne (22kt Gold)	30 805 875-46
	Champagne (22kt Gold)	30 805 875-47
	Brushed Chrome	30 805 875-93
	Brushed Dark Platinum	30 805 875-99

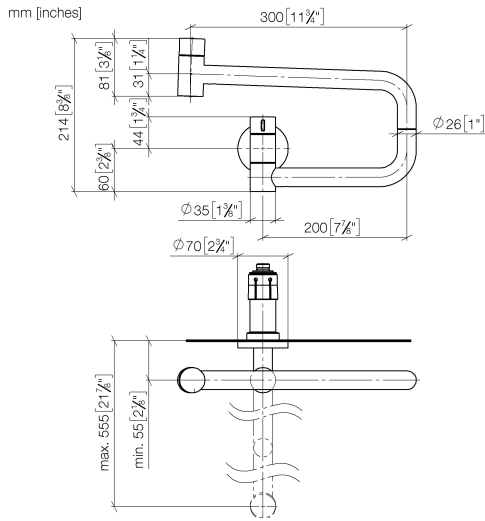
Required miscellaneous

POT FILLER Concealed wall elbow 35 087 970 90

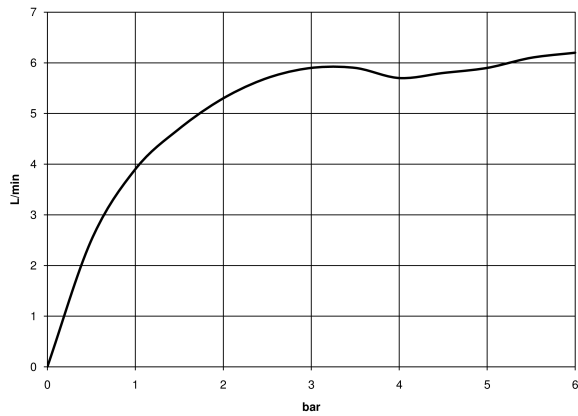


- min. recess depth 80 mm
- max. recess depth 125 mm

30 805 875 Product version from 10/1/2024



Flow rate chart



Codes & Standards

ASME A112.18.1	cUPC	DIN 4109	ISO 3822
NSF372	NSF61	Scottish Water Byelaws	UK Water Supply Regulations

Ü-Zeichen



TARA ULTRA POT FILLER Cold-water valve - Chrome

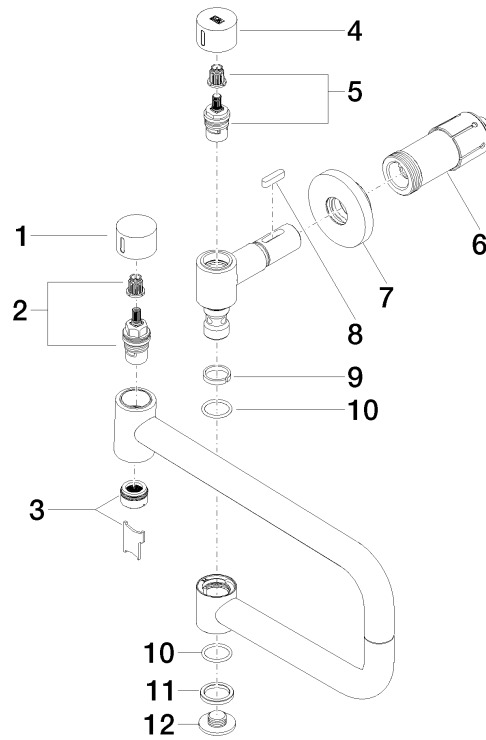
TARA ULTRA

30 805 875 Product version from 10/1/2024

Certificates and sustainability

LGA_29 IAPMO_N-4 IAPMO_6 WRAS_240702 IAPMO_4976 (

EPD-DOR-20230287
-IBA1-EN
Environmental.prod
uct-declarat



Spare parts list

No.	Item Number	Name	Quantity used	Delivery time
2	90 90 03 146 00 90	Head part anti-clockwise closing 1/2" -	1.00	14
12	09 21 02 028-00	Cover Ø 32 x 11 mm - Chrome	1.00	20
6	90 30 01 213 00 90	Connection for Pot Filler incl. flushing hose Ø 38 x 84 mm -	1.00	14
8	90 16 04 001 00 90	spring -	1.00	14
3	90 23 01 026 11-00	Aerator with slit theft-proof Ø 23,5 x 13 mm, 5,68 l/min. - Chrome	1.00	20
7	90 27 87 039 00-00	Rosette for Pot Filler Ø 70 x 10 mm - Chrome	1.00	20
5	90 90 03 171 00 90	Head part clockwise closing backward 1/2" -	1.00	14
1	09 20 62 025-00	Handle Ø 35 x 23 mm - Chrome	1.00	20
10	09 14 10 015 90	O-Ring EPDM 70 21,5 x 2,5 mm -	2.00	14
11	09 28 10 139 90	Ring Ø 28,9 mm -	1.00	14
9	09 28 10 136 90	Ring Ø 25 x 22,4 x 1 mm -	1.00	14
4	09 20 62 027-00	Handle Ø 35 x 23 mm - Chrome	1.00	-

Spare part can no longer be ordered, please order the replacement item