

R20 BS88 Special tags fuse links

Product description

Eaton's Bussmann® series R20 British Standard fuse links are specifically designed for the protection of general industrial applications e.g. power distribution and cable protection.

Standard features

- Good peak let-through current limitation
- 1:1:6 Selective coordination ratio between "minor" and "major" fuse
- gG characteristics for cable protection and general purpose applications
- Power loss values well within the limits of IEC 60269-2



Powering Business Worldwide

Catalogue symbol:

- (amps)R20

Technical data:

- Rated voltage: 690 V a.c. / 400 V d.c.
- Rated current: 450 to 630 A
- Breaking capacity: 80 kA a.c. / 40 kA d.c.
- Breaking range and utilisation category: gG

Standards/approvals:

- BS88-1
- IEC 60269-1
- RoHS compliant

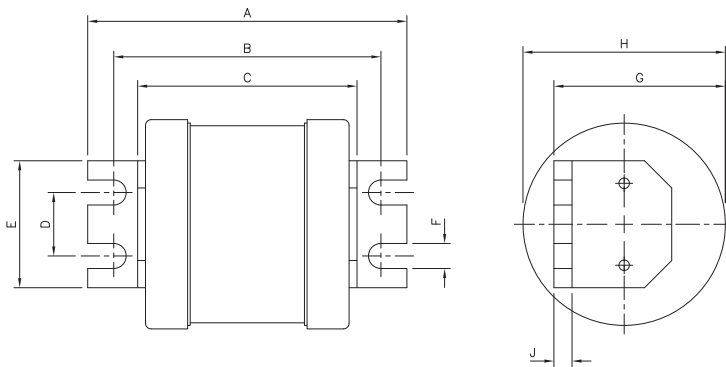
Packaging:

- MOQ: 1

Table 1. Technical data

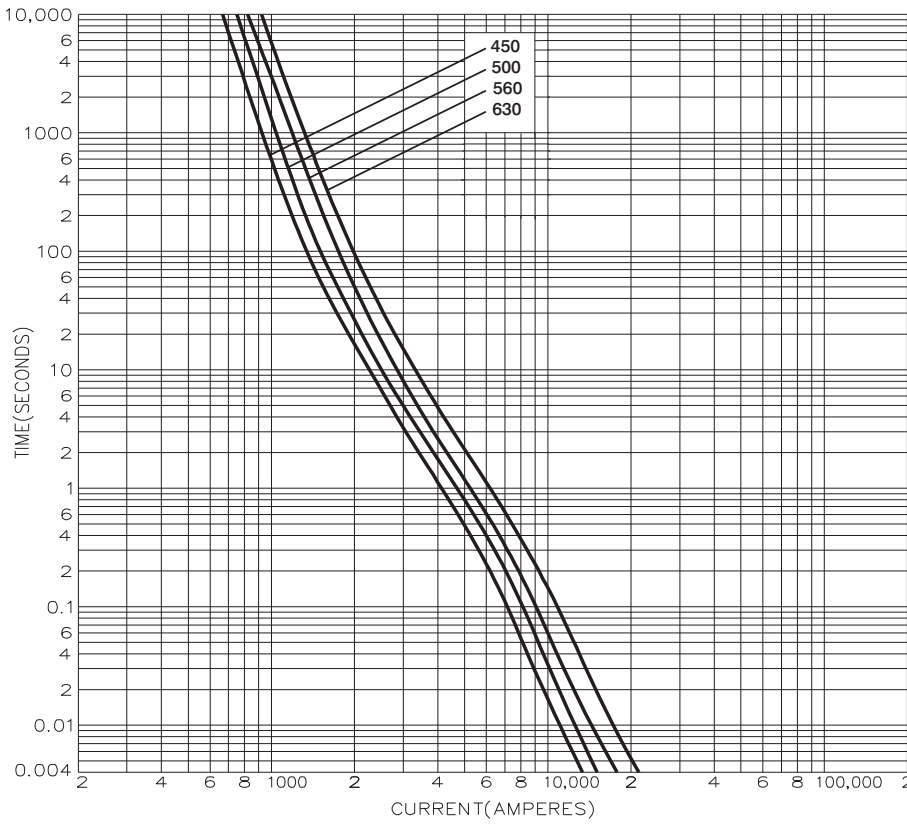
| Part number | Rated voltage | Rated current (Amps) | Energy integrals I ² t (A ² S) | | | | Watts loss W | Product Class |
|-------------|-------------------------|----------------------|--|---------------|---------------|---------------|--------------|---------------|
| | | | Pre-arcing | Total at 415V | Total at 550V | Total at 660V | | |
| 450R20 | 690 V a.c. / 400 V d.c. | 450 | 880,000 | 1,600,000 | 2,200,000 | 4,400,000 | 32 | gG |
| 500R20 | 690 V a.c. / 400 V d.c. | 500 | 1,100,000 | 2,000,000 | 2,800,000 | 5,500,000 | 38 | gG |
| 560R20 | 690 V a.c. / 400 V d.c. | 560 | 1,400,000 | 2,400,000 | 3,500,000 | 6,800,000 | 43 | gG |
| 630R20 | 690 V a.c. / 400 V d.c. | 630 | 2,000,000 | 3,500,000 | 5,000,000 | 9,900,000 | 50 | gG |

Dimensions - mm



| Catalogue numbers | A | B | C | D | E | F | G | H | J |
|-------------------|-----|----|----|----|------|-----|----|----|-----|
| 450-630R20 | 112 | 94 | 77 | 22 | 44.5 | 8.8 | 62 | 74 | 6.4 |

Time current curve



Changes to the products, to the information contained in this document, and to prices are reserved; so are errors and omissions. Only order confirmations and technical documentation by Eaton is binding. Photos and pictures also do not warrant a specific layout or functionality. Their use in whatever form is subject to prior approval by Eaton. The same applies to Trademarks (especially Eaton, Moeller, and Cutler-Hammer). The Terms and Conditions of Eaton apply, as referenced on Eaton Internet pages and Eaton order confirmations.

Eaton
 EMEA Headquarters
 Route de la Longeraie 7
 1110 Morges, Switzerland

Eaton Electrical Products Limited
 Melton Road
 Burton-on-the-Wolds
 Leicestershire, LE12 5TH
 United Kingdom

© 2017 Eaton
 All Rights Reserved
 PDF Only
 Publication No. 4168
 October 2017

Eaton is a registered trademark.

All other trademarks are property of their respective owners.