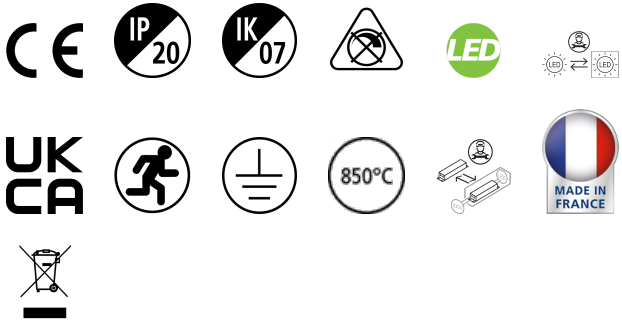


RANA NEO 3500LM REC 1200x300 830 CC EM 1L WHITE

Item No: 0052594

SYLVANIA

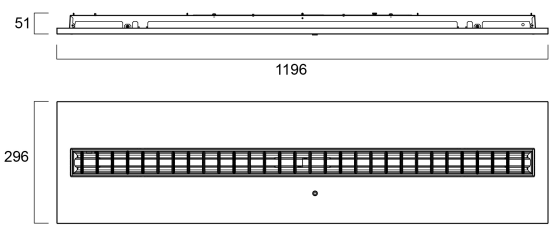
PRO



Ceiling Recessed LED Linear luminaire (lay-in), with Louvre + MPO diffuser, Direct Light Distribution, Luminaire Dimensions: 1196x296x52mm, Sylvania White body colour, IP20, IK07, Emergency 3 hours, Low LED flicker (+/-5%), Warm White (3000K), LED Colour Temperature, 3572lm, 32W, 111lm/W, CRI>80, 3 SDCM (3-step MacAdam ellipse) LED Colour Consistency, UGR<18, Luminance at 65° < 3000 cd/m2, Lifespan: 96,000 hours L80B20, Glow Wire Test 850°C, Quick and easy electrical connection with direct access to push-connectors on top, 2 x metallic safety cables (1.5m) included, the luminaire can be covered with building insulation of Glass Wool type.

Technical Assets

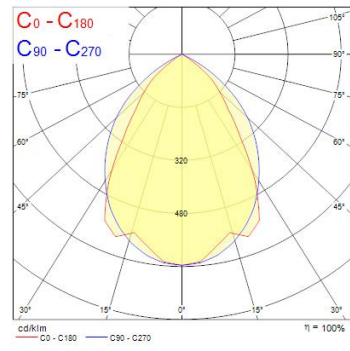
Dimensions (mm)



Photometrics

| Distance [m] | Cone diameter [m] | Beam diameter [m] | Beam diameter [m] | Illuminance [lx] |
|--------------|-------------------|-------------------|-------------------|----------------------|
| 0.5 | 0.91 0.69 | E107 E100 | E107 E100 | 9098 1936 2538 |
| 1.0 | 1.83 1.38 | E107 E100 | E107 E100 | 2272 499 635 |
| 1.5 | 2.74 2.07 | E107 E100 | E107 E100 | 1010 204 261 |
| 2.0 | 3.65 2.76 | E107 E100 | E107 E100 | 500 115 150 |
| 2.5 | 4.57 3.45 | E107 E100 | E107 E100 | 364 73 102 |
| 3.0 | 5.48 4.14 | E107 E100 | E107 E100 | 282 51 71 |

Distance [m] Cone diameter [m] Illuminance [lx]
 C0 - C180 (Half beam angle: 69.2°)
 C90 - C270 (Half beam angle: 84.9°)



RANA NEO 3500LM REC 1200x300 830 CC EM 1L WHITE

Item No: 0052594

SYLVANIA

General data

| | |
|---|---|
| Product name | RANA NEO 3500LM REC 1200x300 830 CC EM 1L WHITE |
| Technology | LED (3 SDCM) |
| Cap/Base | N/A |
| Housing | Steel |
| Mount | Ceiling recessed mounting |
| General application | Education, Office |
| Performance ambient temperature Tq (°C) | 25 |
| ETIM Class | EC002892 |
| Warranty | 5 years |

Optical data

| | |
|-----------------------------------|------------|
| Useful luminous flux (Φuse) | 3572 |
| Fixture luminous flux (lm) | 3572 |
| Luminous flux (lm) | 3572 |
| Luminaire efficacy (lm/W) | 111 |
| Correlated colour temperature (k) | 3000 |
| Light colour | Warm White |
| CRI (Ra) | 80 |
| Colour Variation Initial (SDCM) | SDCM3 |
| Glare control | < 18 |
| Photobiological Risk Group | RG0 |
| Luminous flux (emergency) (lm) | 80 |
| Emergency duration (h) | 3 |

Electrical data

| | |
|--|-----------------------------|
| Total power consumption (W) | 32 |
| Primary Supply/Product voltage - min (V) | 220 |
| Primary Supply/Product voltage - max (V) | 240 |
| Lamp power factor | 0.97 |
| THD (at 230 V, 50 Hz, full load, at 100% dimming level) ≤ xx.x % | 15 |
| Electrical protection | Class I |
| Control gear required | No |
| Control gear type | LED driver constant current |
| Dimmable | No |
| Dimming method | N/A |
| Drive current (mA) | 300 |
| Inrush Current (A) | 5.5 |
| Inrush Duration (µs) | 20 |
| Energy Efficiency Class (A->G) of contained light source | C |
| Nominal Frequency (Hz) | 50/60Hz |
| LED Flickering Rate | Ultra low (5% or less) |
| Max. products per 10A C Breaker | 41 |
| Max. products per 13A C Breaker | 53 |
| Max. products per 16A C Breaker | 65 |
| Max. products per 20A C Breaker | 82 |
| Max. products per 10A B Breaker | 41 |
| Max. products per 13A B Breaker | 53 |
| Max. products per 16A B Breaker | 65 |
| Max. products per 20A B Breaker | 82 |

Lifetime data

| | |
|------------------|--------|
| Lifespan L70 B50 | 100000 |
| Lifespan L80 B20 | 96000 |

RANA NEO 3500LM REC 1200x300 830 CC EM 1L WHITE

Item No: 0052594

SYLVANIA

Physical data

| | |
|-----------------------------|----------------------------------|
| Housing colour | RAL 9016 - Traffic white / Bezel |
| IP rating | IP20 |
| IK rating | IK07 |
| Diffuser finish | Matt/satinized |
| Diffuser material | PC Polycarbonate |
| Nominal Product Length (mm) | 1196 |
| Nominal Product Width (mm) | 296 |
| Nominal Product Height (mm) | 52 |
| Weight (kg) | 5.5 |

Packaging

| | |
|---------------------------------------|----------------|
| Product EAN number | 5410288525945 |
| Packaging single length / height (cm) | 124.5 |
| Packaging single width (cm) | 6.5 |
| Packaging single depth (cm) | 32.0 |
| DUN14 (inner) | 05410288525945 |
| Units per outer package | 1 |
| Packaging outer length / height (cm) | 124.5 |
| Packaging outer width (cm) | 6.5 |
| Packaging outer depth (cm) | 32.0 |

Safety data

| | |
|---------------------|-----|
| Glow Wire Test (°C) | 850 |
|---------------------|-----|