

Wall elbow with integrated shower holder - Platinum



SERIES SPECIFIC

28 490 660 Product version from 10/1/2023



- 3/8" shower outlet
- rosette Ø 60 mm
- 1/2" connection
- WRAS

Intrinsic protection against back flow.

	Platinum	28 490 660-08
	Chrome	28 490 660-00
	Brushed Platinum	28 490 660-06
	Dark Chrome	28 490 660-19
	Light Gold (PVD)	28 490 660-26
	Brushed Light Gold (PVD)	28 490 660-27
	Brushed Durabrass (23kt Gold)	28 490 660-28
	Matte Black	28 490 660-33
	Brushed Gold (PVD)	28 490 660-37
	Brushed Dark Brass (PVD)	28 490 660-39
	Brushed Bronze (PVD)	28 490 660-42
	Brushed Dark Bronze (PVD)	28 490 660-43
	Brushed Champagne (22kt Gold)	28 490 660-46
	Champagne (22kt Gold)	28 490 660-47
	Brushed Chrome	28 490 660-93
	Brushed Dark Platinum	28 490 660-99

Recommended miscellaneous



- Concealed wall elbow -**
- min. recess depth 90 mm
 - max. recess depth 163 mm

35 085 970 90

Recommended miscellaneous

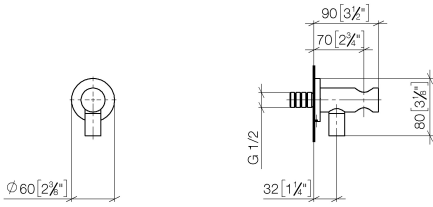


- Concealed wall elbow -**
- min. recess depth 90 mm
 - max. recess depth 163 mm

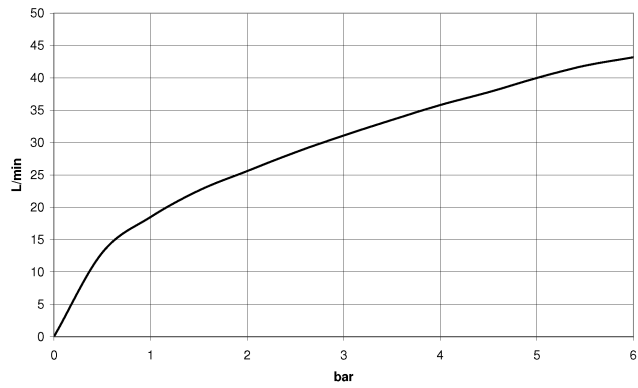
35 085 970 90

28 490 660 Product version from 10/1/2023

mm [inches]



Flow rate chart



Codes & Standards

EN 1717

Scottish Water
Byelaws

UK Water Supply
Regulations



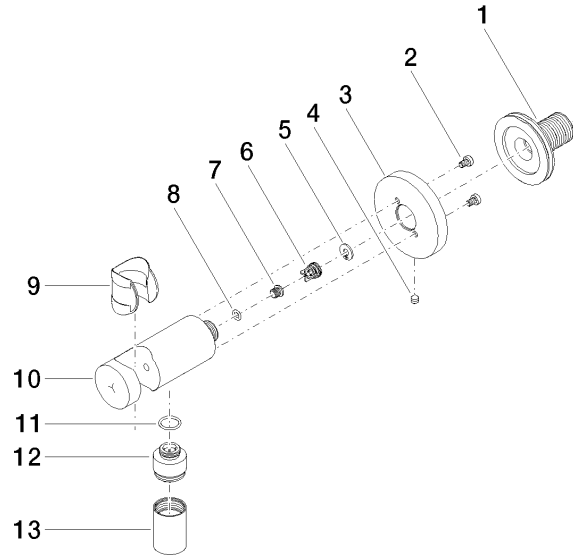
Wall elbow with integrated shower holder - Platinum

SERIES SPECIFIC

28 490 660 Product version from 10/1/2023

Certificates and sustainability

Belgaqua_21-024-2 WRAS_250402 Belgaqua_25-344-2



Spare parts list

No.	Item Number	Name	Quantity used	Delivery time
	7 09 30 30 113 20 90	Mounting Ø 8 x 6,5 mm -	1.00	14
	5 09 16 01 023 90	Ring Retaining ring Ø 11 x 1 mm -	1.00	14
	10 09 11 03 124-08	Holder Ø 30 x 93 mm - Platinum	1.00	54
	6 09 23 01 131 90	Back-flow preventer without limitation Ø 10 x 10,5 mm -	1.00	14
	8 09 14 10 001 90	O-Ring EPDM 70 4,5 x 1,5 mm -	1.00	14
	1 90 24 03 280 00 90	Connection -	1.00	14
	4 09 31 11 112 90	Mounting Threaded pin with hexagon socket with point M5 x 6 mm -	1.00	-
Spare part can no longer be ordered, please order the replacement item				
	043111120090	Mounting Threaded pin M5 x 6 mm -		
	12 09 24 03 279-08	Nipple Ø 22 x 21 mm - Platinum	1.00	54
	9 09 18 40 216 90	Sleeve 29 x 32 x 29 mm -	1.00	14
	11 09 14 10 213 90	O-Ring EPDM 70 12,0 x 1,5 mm -	1.00	14
	13 90 21 02 069 00-08	Cover/sleeve M20 x 1 - Platinum	1.00	54
	3 09 27 66 001-08	Rosette Ø 60 x 9 mm - Platinum	1.00	54
	2 09 30 30 037 90	Mounting Cylinder head screw with hexagon socket with low profile, without key guide M4 x 6 mm -	2.00	14