

## Data Sheet | Item Number: 279-490

Jumper; 10-way; insulated; gray

<https://www.wago.com/279-490>



Color: ■ gray

### Physical data

Width	40 mm / 1.575 inches
Height	3.89 mm / 0.153 inches
Jumper assignment	1-2-3-4-5-6-7-8-9-10

### Material data

Note (material data)	<a href="https://www.wago.com/us/material-specifications">Information on material specifications can be found here</a>
Color	gray
Fire load	0.022 MJ
Weight	3.6 g

### Commercial data

eCl@ss 10.0	27-14-11-40
eCl@ss 9.0	27-14-11-40
ETIM 8.0	EC000489
ETIM 7.0	EC000489
PU (SPU)	50 (25) pcs
Packaging type	Box
Country of origin	DE
GTIN	4044918610506
Customs tariff number	85366990990

### Environmental Product Compliance

RoHS Compliance Status	Compliant, No Exemption
------------------------	-------------------------

## Downloads

### Environmental Product Compliance

#### Compliance Search

Environmental Product Compliance 279-490



## Documentation

### Additional Information

Technical Section

pdf  
2240.62 KB



### Bid Text

279-490

19.02.2019

xml  
2.54 KB



279-490

27.04.2017

doc  
23.50 KB



## CAD/CAE-Data

### CAD data

2D/3D Models 279-490



### CAE data

WSCAD Universe  
279-490



ZUKEN Portal 279-490



## 1 Compatible Products

### 1.1 Optional Accessories

#### 1.1.1 Tool

##### 1.1.1.1 Operating tool

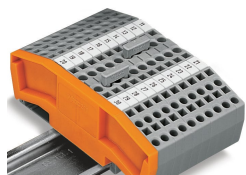


#### Item No.: 279-440

Operating tool; made of insulating material; 10-way; white

## Installation Notes

### Commoning



Commoning using comb-style jumper bars.

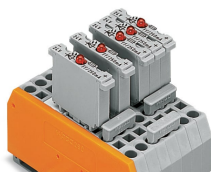
Push comb-style jumper bars down until fully inserted.

### Commoning



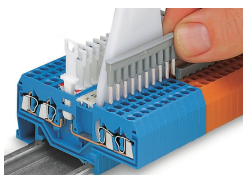
4-conductor through terminal blocks, angled type, formation of groups with 3-way, comb-style jumper bars

### Commoning



Carrier terminal blocks with component plugs, alternate comb-style jumper bars, 3-way comb-style jumper bar

### Commoning



Commoning front-entry disconnect terminal blocks via comb-style jumper bar using a 10-pole operating tool