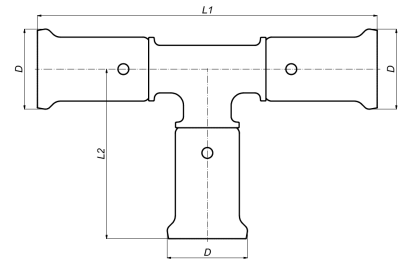


## 9PK-262626: T-piece 26x26x26



### Commercial information

PVDF press fittings in combination with multilayer pipe, a completely corrosion-free system. The synthetic press fittings are made from injection moulded PVDF (Polyvinylidene fluoride)\*. PVDF offers the user a unique combination of properties:

- Highly resistant to pressure and temperature
- Excellent mechanical strength
- Extreme flexibility: bending up to 10° is possible
- Perfectly suited for drinking water and food
- Highly resistant to chemicals and corrosion
- Embedding is possible without extra protection

#### Basic unit dimensions

Height	33 mm
Length	107 mm
Width	70 mm
Net weight	0.109 kg

#### Certificates

ATG, QB (CSTBat), DVGW Wasser, ETA, KIWA, ÖVGW Wasser, SINTEF, WRAS, KOMO, STF, ÖN EN 21003-2/-3, GOST-R, ITC, TSU, AFNOR, PZH, ACS, DNV-GL, Aenor, Sans 21003, Kontrol Biro, RISE, EMI

#### Applications

Potable water, Heating, Compressed air, Cooling, Demi Water, Sanitary

#### Solutions

Building installations, Industry, Utility, Shipbuilding

## Technical characteristics

Material connection 1	Polyvinylidene fluoride (PVDF)	Angle	90 Degrees
Material quality connection 1	Other	Outer pipe diameter connection 1	26 Millimetre
Surface protection connection 1	Untreated	Wall thickness, connection 1	0.95 Millimetre
Surface treatment connection 1	Untreated	Outer pipe diameter connection 2	26 Millimetre
Material connection 2	Polyvinylidene fluoride (PVDF)	Wall thickness, connection 2	0.95 Millimetre
Material quality connection 2	Other	Outer pipe diameter connection 3	26 Millimetre
Surface protection connection 2	Untreated	Wall thickness, connection 3	0.95 Millimetre
Surface treatment connection 2	Untreated	Length of connection 1	53.5 Millimetre
Material connection 3	Polyvinylidene fluoride (PVDF)	Working length connection 1	26.5 Millimetre
Material quality connection 3	Other	Length of connection 2	53.5 Millimetre
Surface protection connection 3	Untreated	Working length connection 2	26.5 Millimetre
Surface treatment connection 3	Untreated	Length of connection 3	53.5 Millimetre
Model	T-piece	Working length connection 3	26.5 Millimetre
Swept entry type (with inner radius)	✗	Wrench width	0 Millimetre
Reducing	✗	Max. operating pressure at 20 °C	16 Bar
System specific	✓	Wrench width union nut	0 Millimetre
Nominal diameter connection 1	DN 20	Max. operating pressure at max. medium temperature	10 Bar
Connection 1	Press sleeve	Medium temperature (continuous)	-10 70 Degrees celsius
Contour code connection 1	TH	Standard Dimension Ratio (SDR)	0
Nominal diameter connection 2	DN 20		
Connection 2	Press sleeve		
Contour code connection 2	TH		
Nominal diameter connection 3	DN 20		
Connection 3	Press sleeve		
Contour code connection 3	TH		
Flange standard	Other		
Material sealing	Ethylene-propylene diene monomer rubber (EPDM)		
Main colour fitting	Black		
High tensile strength	✗		
Ring stiffness class	Other		
With sealing rings/gaskets	✓		
With drain valve	✗		
With de-aerator	✗		
With thermal insulation	✗		
With buffer stud	✓		
Capped	✗		
With connection indicator	✗		
FM quality mark	✗		
LPCB quality mark	✗		
ULC quality mark	✗		
UL quality mark	✗		
DIN-CERTCO certificate	✗		
VdS quality mark	✗		
With approval for TÜV	✗		
DVGW quality mark for gas	✗		
DVGW quality mark for water	✓		
KIWA certified	✓		
Gastec QA mark	✗		
KOMO certified	✓		
Type approval according to BBR/EKS	✗		