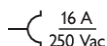


Socket outlet 60 x 71 mm without earthing, with plug-in terminals, base and finishing set, screw fixing, white

101-66515



4 year warranty

Compound socket outlet (base and finishing set) 16 A~250 V is equipped with contact buses with a large contact surface area which must not rest on the base in order to be connected and plug-in terminals with releases. These releases can be operated from the front side by hand or with a screwdriver. Colour: white

This article is protected by at least one patent (or patent application). For more info on patents, see www.niko.eu/innovation.

- wire is fixed firmly due to the high-quality plug-in terminal with a long life span, tested according to the norm
- since the conductor release on the mechanisms is located at the front, the wiring cannot push on the release when you place it in the flush-mounting box.

Faster and easier installation:

- all connections terminals are located at the top of the base:

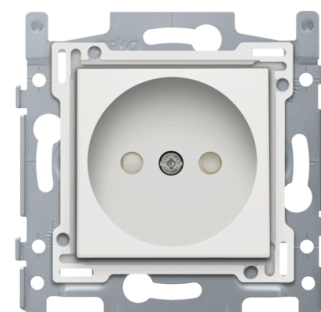
Niko quality:

- long life span since the plug-in terminal stays within the limits of the norm during a temperature and power drop
- metal base is held firmly in place, even on uneven walls, doesn't break and is not subject to stress cracking (small ruptures)
- firm metal claws with a large engagement depth (31 mm) remain fixed when mounted and can be screwed tightly to ensure that the socket outlets can remain fixed in the wall for a longer time and to avoid the mechanisms should become warped

Technical data

Socket outlet 60 x 71 mm without earthing, with plug-in terminals, base and finishing set, screw fixing, white.

- Colour: white
- Colour RAL (approximately): 9010
- Colour NCS (approximately): NCS S 0502-Y50R



- Type of fastening:
 - with screws for simple fixing in a flush-mounting box with grip surfaces
- Minimum ambient temperature: 5 °C
- Maximum ambient temperature: 40 °C
- Protection degree: IP41 for the combination of a mechanism, central plate and faceplate
- Impact resistance: the combination of a mechanism, a central plate and a faceplate has an impact-resistance of IK06
- Certification marks: CEBEC, DEKRA
- Marking: CE

This product consists of several components. Below you will find an overview of the technical features of all components.

Base for socket outlet without earthing, flush-mounting depth 21 mm, 16 A, plug-in terminals.

- Flush-mounting frame type:
 - 1 mm-thick metal
 - galvanized on all sides after cutting, even on the cut edges
 - with 4 grooves with screw hole of 7 mm
 - with 4 screw holes (indicated by a screw symbol) with a diameter of 3 mm for mounting on panels
- Type of fastening:
 - with screws for simple fixing in a flush-mounting box with grip surfaces
- Base end border: 4 rectangular openings (7 x 2.5 mm) which, if the flush-mounting box protrudes from the plasterwork, can compensate for a margin of between 1 and 1.2 mm, so that the faceplate can still butt up perfectly against the wall
- Terminals location: top of the base
- Terminal wire connection: plug-in terminals
- Terminals wire capacity: 2 x 2.5 mm²
- Wire stripping length: 14 mm
- Minimum flush-mounting depth: 21 mm
- Protection degree: the combination of a mechanism, a central plate and a faceplate has a protection degree of IP21D
- Impact resistance: the combination of a mechanism, a central plate and a faceplate has an impact-resistance of IK06
- Certification marks: CEBEC, DEKRA

Finishing set for socket outlet without earthing, with shutters, flush-mounting depth 21mm, white.

- Colour: white
- Colour RAL (approximately): 9010
- Colour NCS (approximately): NCS S 0502-Y50R
- Surface treatment: coloured in mass
- Fire safety:
 - all plastic components are self-extinguishing (comply with a filament test of 650°C)
 - all plastic components are halogen-free
- Protection degree: the combination of a mechanism, a central plate and a faceplate has a protection degree of IP21D
- Impact resistance: the combination of a mechanism, a central plate and a faceplate has an impact-resistance of IK06

- Certification marks: CEBEC, DEKRA

Wiring diagram

