

33 200 660 Product version from 7/1/2023



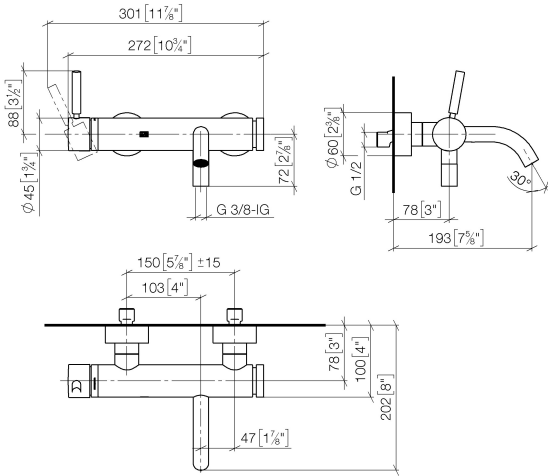
- 202mm projection
- circular normal flow
- automatic bath/shower diverter
- 3/8" shower outlet
- slide-on rosettes Ø 60 mm
- 1/2" connection
- gauge 150 mm - 15 mm
- max. flow 14 l/min at 3 bar flow pressure
- WRAS

Intrinsic protection against back flow.

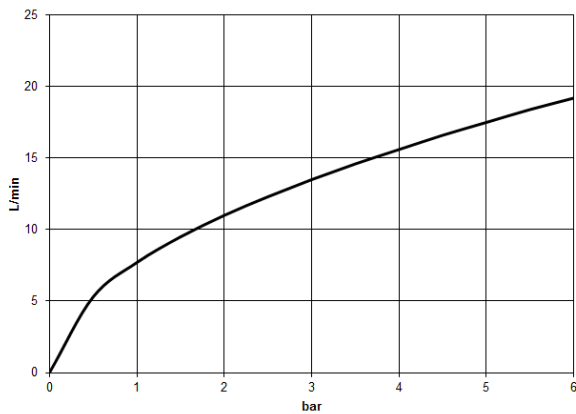
	Chrome	33 200 660-00
	Brushed Platinum	33 200 660-06
	Dark Chrome	33 200 660-19
	Light Gold (PVD)	33 200 660-26
	Brushed Light Gold (PVD)	33 200 660-27
	Matte Black	33 200 660-33
	Brushed Gold (PVD)	33 200 660-37
	Brushed Dark Brass (PVD)	33 200 660-39
	Brushed Bronze (PVD)	33 200 660-42
	Brushed Dark Bronze (PVD)	33 200 660-43
	Brushed Chrome	33 200 660-93
	Brushed Dark Platinum	33 200 660-99

33 200 660 Product version from 7/1/2023

mm [inches]



**Flow rate chart**



**Codes & Standards**

DIN 4109

EN 1717

ISO 3822

Scottish Water  
Byelaws

UK Water Supply  
Regulations

Ü-Zeichen



## META Single-lever bath mixer for wall mounting without shower set - Chrome

META

33 200 660 Product version from 7/1/2023

### Certificates and sustainability

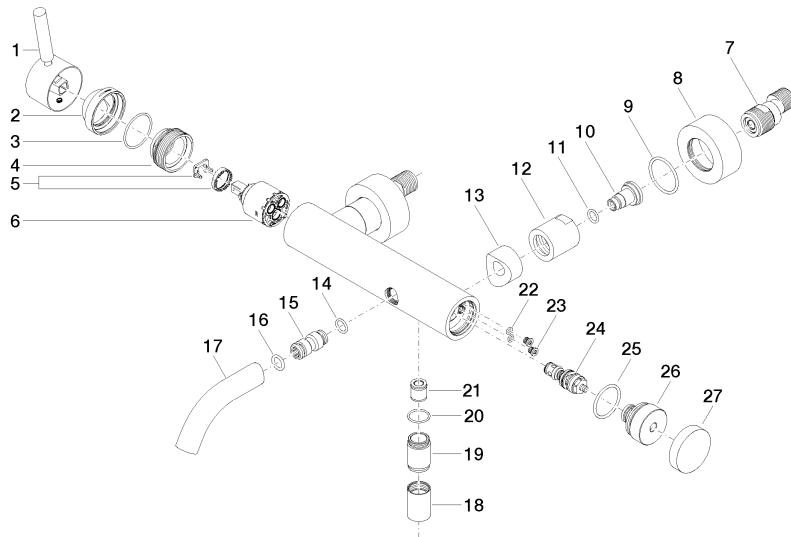
Belgaqua\_21-025-2 LGA\_29

WRAS\_2207

EPD-DOR-20230287 Belgaqua\_25-338-2  
-IBA1-EN  
Environmental.prod  
uct-declarat

33 200 660 Product version from 7/1/2023

Parts for other finishes can be found here: [Brushed](#) [Platinum](#)



Spare parts list

No.	Item Number	Name	Quantity used	Delivery time
13	09 18 40 059-00	Connection Spacer Ø 33 x 23 mm - Chrome	2.00	20
18	90 21 02 069 00-00	Cover/sleeve M20 x 1 - Chrome	1.00	20
22	09 14 10 001 90	O-Ring EPDM 70 4,5 x 1,5 mm -	2.00	14
8	09 27 62 004-00	Rosette Ø 60 x 25 mm - Chrome	2.00	20
2	09 28 30 032-00	Cover Ø 45 x 22,7 mm - Chrome	1.00	20
12	09 23 10 048-00	Mounting Ø 33 x 34 mm - Chrome	2.00	20
3	09 14 10 102 90	O-Ring 33,05 x 1,78 mm -	1.00	14
16	90 14 10 011 00 90	O-Ring EPDM 70 11,0 x 2,5 mm -	1.00	14
17	90 11 06 213 00-00	Spout 90 x 145 x 35 mm, 22 l/min. - Chrome	1.00	20
19	09 24 03 115 20-00	Nipple Ø 22 x 33 mm - Chrome	1.00	20
24	90 31 09 032 00-00	Diverter for bath mixer Ø 20 x 50 mm - Chrome	1.00	20
23	09 30 30 113 20 90	Mounting Ø 8 x 6,5 mm -	2.00	14
5	90 28 10 148 00 90	Temperature limitation ring -	1.00	14
20	90 14 10 032 00 90	O-Ring 18,1 x 1,6 mm -	1.00	14
11	09 14 10 008 90	O-Ring 10,0 x 2,0 mm -	2.00	14
4	09 24 04 296 90	Cartridge Cartridge screw connection Ø 40 x 20 mm -	1.00	14
26	09 21 10 035 20-00	Diverter for bath wall-mounting Ø 37 x 34,5 mm - Chrome	1.00	20
9	09 14 10 119 90	O-Ring EPDM 70 33,0 x 2,5 mm -	2.00	14
25	09 14 10 101 90	O-Ring EPDM 70 30,0 x 2,5 mm -	1.00	14
21	90 23 01 141 00 90	Back-flow preventer -	1.00	14
7	04 11 04 030 00 90	S-connection with sound damper and seal 1 pair G1/2 x G3/4 -	2.00	14
10	09 29 05 005 20 90	nipple	2.00	82
14	09 14 10 003 90	O-Ring EPDM 70 11,0 x 2,0 mm -	1.00	14
15	09 24 04 043 90	Nipple Ø 17 x 36 mm -	1.00	14
1	90 20 66 007 00-00	Handle Lever 52 x 35 x 117 mm - Chrome	1.00	20
27	09 20 62 031-00	Pull button Ø 45 x 10 mm - Chrome	1.00	20
6	90 15 05 064 00 90	Single-lever mixer cartridge Ø 35 mm x 58,6 mm -	1.00	-

Spare part can no longer be ordered, please order the replacement item

9015050460090

Single-lever mixer cartridge Ø 35 mm x 58,6 mm -