

**TARA Wall valve clockwise closing 3/4" - Brushed Durabronz (23kt Gold)**

TARA


36 608 882 Product version up to 10/27/2020



- rosette Ø 55 mm
- head part with cut-to-length spindle and sleeve
- WRAS

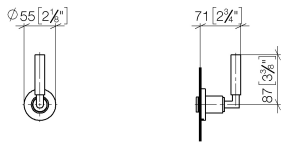
	Brushed Durabronz (23kt Gold)	36 608 882-28
	Chrome	36 608 882-00
	Brushed Platinum	36 608 882-06
	Platinum	36 608 882-08
	Dark Chrome	36 608 882-19
	Matte Black	36 608 882-33
	Brushed Dark Brass (PVD)	36 608 882-39
	Brushed Bronze (PVD)	36 608 882-42
	Brushed Dark Bronze (PVD)	36 608 882-43
	Brushed Champagne (22kt Gold)	36 608 882-46
	Champagne (22kt Gold)	36 608 882-47
	Brushed Chrome	36 608 882-93
	Brushed Dark Platinum	36 608 882-99

**Required miscellaneous**

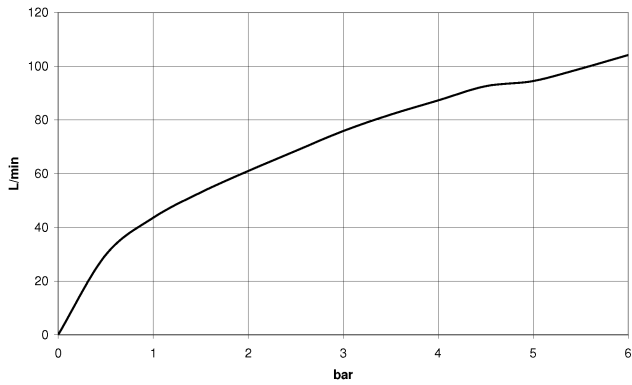
	<b>Wall valve 3/4" -</b> •min. recess depth 85 mm •max. recess depth 145 mm	35 608 970 90
--	---	---------------

36 608 882 Product version up to 10/27/2020

mm [inches]



Flow rate chart



Codes & Standards

ASME A112.18.1

cUPC

Scottish Water  
Byelaws

UK Water Supply  
Regulations



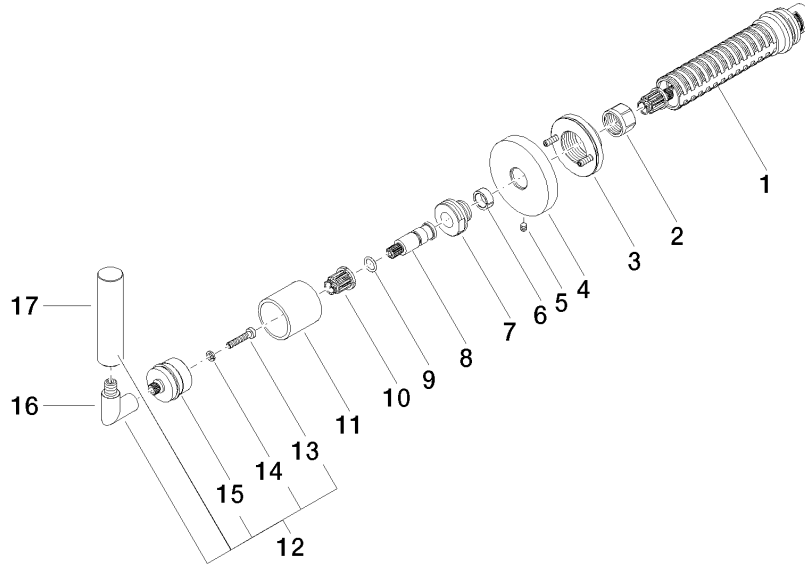
## TARA Wall valve clockwise closing 3/4" - Brushed Durabron (23kt Gold)

TARA

36 608 882 Product version up to 10/27/2020

### Certificates and sustainability

WRAS\_2010 EPD-DOR-20230287 IAPMO\_4976 (  
-IBA1-EN  
Environmental.prod  
uct-declarat



### Spare parts list

No.	Item Number	Name	Quantity used	Delivery time
16	04 18 20 022 00-28	Handle Angle piece 26 x 23 x 12 mm - Brushed Durabron (23kt Gold)	1.00	-
Spare part can no longer be ordered, please order the replacement item				
11	09 21 02 144-28	Cover Ø 30 x 30 mm - Brushed Durabron (23kt Gold)	1.00	40
17	09 20 88 052-28	Handle Ø 17 x 70 mm - Brushed Durabron (23kt Gold)	1.00	40
5	90 31 11 007 00 90	Mounting Threaded pin with hexagon socket M4 x 6 mm -	1.00	14
15	90 12 12 007 00-28	Handle Socket retainer Ø 29 x 26 mm - Brushed Durabron (23kt Gold)	1.00	40
9	90 14 10 060 00 90	O-Ring 8,0 x 1,5 mm -	1.00	14
1	90 90 03 127 00 90	Head part clockwise closing 3/4" -	1.00	14
14	90 30 11 029 00 90	Connection Spring lock washer Ø 4 -	1.00	14
8	09 29 06 022 90	Connection Ø 11 x 38,5 mm -	1.00	14
7	09 24 05 002 90	Nipple Ø 24 x 16 mm -	1.00	14
10	90 12 12 002 00 90	Fixing cap white Ø 15 x 12 mm -	1.00	14
4	09 27 89 115-28	Rosette Ø 55 x Ø 15,1 x 9 mm - Brushed Durabron (23kt Gold)	1.00	40
13	90 30 30 075 00 90	Mounting Cylinder head screw with hexagon socket Low profile M4 x 20 mm -	1.00	14
6	90 14 15 020 03 90	Support ring -	1.00	14
3	90 21 02 108 00 90	Wall disc complete -	1.00	14
2	90 23 30 023 00 90	Cap nut -	1.00	14
12	04 20 88 052 10-28	Handle TARA complete - Brushed Durabron (23kt Gold)	1.00	40