

20 000 892 Product version from 4/1/2024

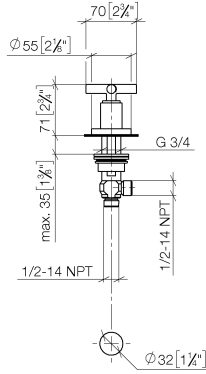


- hole diameter 32 mm
- rosette Ø 55 mm
- WRAS

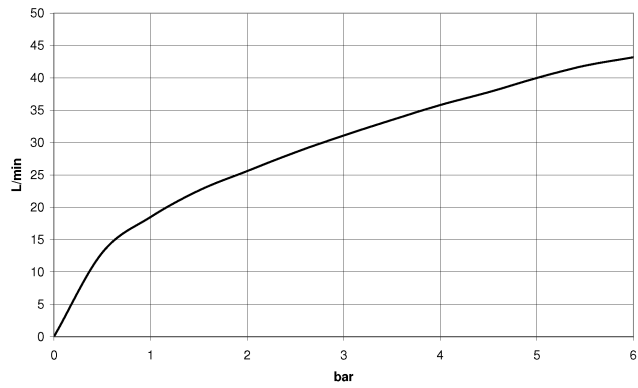
	Brushed Dark Platinum	20 000 892-99
	Chrome	20 000 892-00
	Brushed Platinum	20 000 892-06
	Platinum	20 000 892-08
	Dark Chrome	20 000 892-19
	Brushed Durabronze (23kt Gold)	20 000 892-28
	Matte Black	20 000 892-33
	Brushed Gold (PVD)	20 000 892-37
	Brushed Dark Brass (PVD)	20 000 892-39
	Brushed Dark Bronze (PVD)	20 000 892-43
	Brushed Champagne (22kt Gold)	20 000 892-46
	Champagne (22kt Gold)	20 000 892-47
	Brushed Chrome	20 000 892-93

20 000 892 Product version from 4/1/2024

mm [inches]



Flow rate chart



Codes & Standards

ASME A112.18.1

cUPC

Scottish Water
Byelaws

UK Water Supply
Regulations



TARA Deck valve clockwise closing cold or hot - Brushed Dark Platinum

TARA

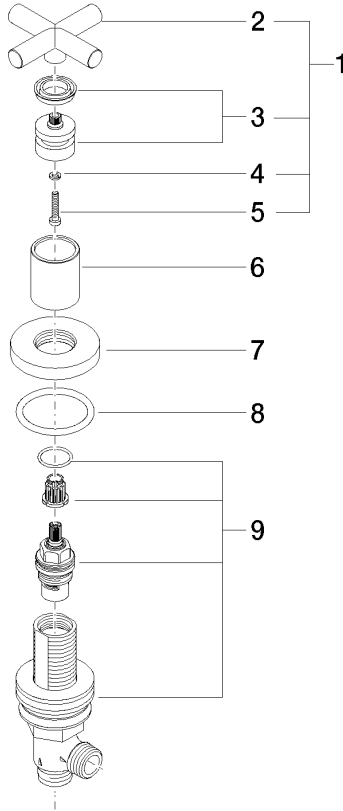
20 000 892 Product version from 4/1/2024

Certificates and sustainability

WRAS_2112	IAPMO_4976	EPD-DOR-20230287 -IBA1-EN Environmental.prod uct-declarat
-----------	------------	--

20 000 892 Product version from 4/1/2024

Parts for other finishes can be found here: [Chrome](#)



Spare parts list

No.	Item Number	Name	Quantity used	Delivery time
7	09 27 89 105-99	Rosette Ø 55 x Ø 47,3 x 9 mm - Brushed Dark Platinum	1.00	40
1	90 20 89 010 10-99	Handle TARA - Brushed Dark Platinum	1.00	40
4	90 30 11 029 00 90	Connection Spring lock washer Ø 4 -	1.00	14
2	09 20 89 010-99	Handle 70 x 70 x 22,5 mm - Brushed Dark Platinum	1.00	-
Spare part can no longer be ordered, please order the replacement item				
	90208901010-99	Handle TARA - Brushed Dark Platinum		
8	90 14 10 043 00 90	O-Ring 40,0 x 4,0 mm -	1.00	14
9	90 17 11 040 31 90	Deck valve clockwise closing 1/2" -	1.00	14
6	09 21 02 140-99	Cover Ø 30 x 36 mm - Brushed Dark Platinum	1.00	40
5	90 30 30 075 00 90	Mounting Cylinder head screw with hexagon socket Low profile M4 x 20 mm -	1.00	14
3	90 12 12 007 00-99	Handle Socket retainer Ø 29 x 26 mm - Brushed Dark Platinum	1.00	40