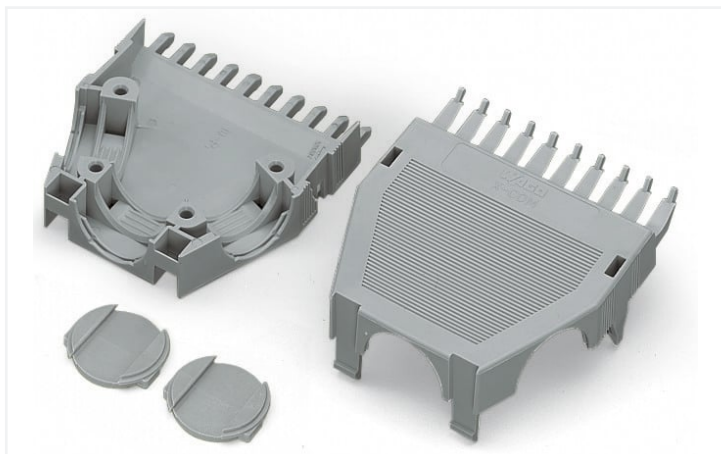


Data Sheet | Item Number: 769-1614

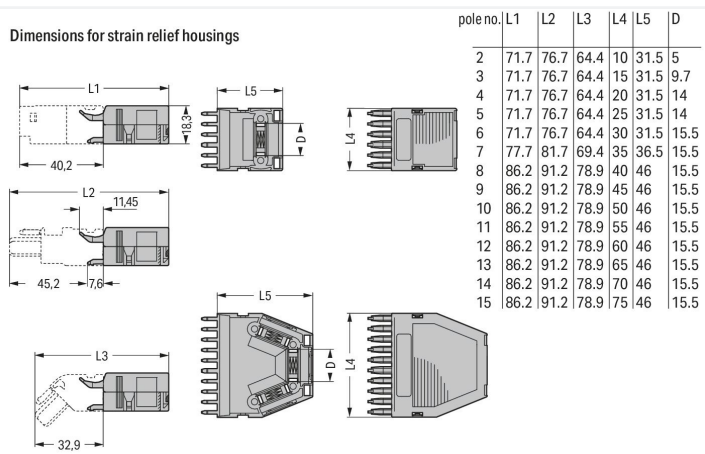
Strain relief housing; for female and male connectors; 2 parts; Pin spacing 5 mm; 14-pole; gray

<https://www.wago.com/769-1614>



Color: ■ gray

Similar to illustration



Dimensions in mm
Dimensions in mm

Connection data

Connection 1

Pole number 14

Physical data

Width 70 mm / 2.756 inches
Height 18.3 mm / 0.72 inches
Depth 46 mm / 1.811 inches

Material data

Note (material data)

[Information on material specifications can be found here](https://www.wago.com/us/material-specifications)

Color gray
Fire load 0.617 MJ
Weight 16.7 g

Commercial data

Product Group 18 (X-COM-System)
eCl@ss 10.0 27-14-11-92
eCl@ss 9.0 27-14-11-92
ETIM 8.0 EC002848
ETIM 7.0 EC002848
PU (SPU) 25 pcs
Packaging type Box
Country of origin DE
GTIN 4017332736503
Customs tariff number 39269097900

Environmental Product Compliance

RoHS Compliance Status	Compliant, No Exemption
------------------------	-------------------------

Downloads

Environmental Product Compliance

Compliance Search	
Environmental Product Compliance 769-1614	↓

Documentation

Additional Information		
Technical Section	pdf 2240.62 KB	↓

Bid Text			
769-1614	19.02.2019	xml 2.64 KB	↓
769-1614	23.05.2017	doc 23.00 KB	↓

CAD/CAE-Data

CAD data	
2D/3D Models 769-1614	↓

CAE data	
EPLAN Data Portal 769-1614	↓
WSCAD Universe 769-1614	↓
ZUKEN Portal 769-1614	↓

1 Compatible Products

1.1 Optional Accessories

1.1.1 Installation

1.1.1.1 Mounting accessories



[Item No.: 209-174](#)
Cable clamp; for strain relief; 7 or more poles



[Item No.: 209-173](#)
Fixing screw; for cable clamp; 7 or more poles

1.1.2 Marking

1.1.2.1 Marker



Item No.: 209-501/000-006

WSB marking card; as card; not stretchable; plain; snap-on type; blue



Item No.: 209-501/000-007

WSB marking card; as card; not stretchable; plain; snap-on type; gray



Item No.: 209-501/000-023

WSB marking card; as card; not stretchable; plain; snap-on type; green



Item No.: 209-501/000-017

WSB marking card; as card; not stretchable; plain; snap-on type; light green



Item No.: 209-501/000-012

WSB marking card; as card; not stretchable; plain; snap-on type; orange



Item No.: 209-501/000-005

WSB marking card; as card; not stretchable; plain; snap-on type; red



Item No.: 209-501/000-024

WSB marking card; as card; not stretchable; plain; snap-on type; violet



Item No.: 209-501

WSB marking card; as card; not stretchable; plain; snap-on type; white

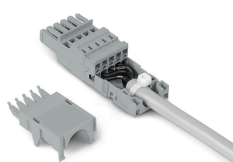


Item No.: 209-501/000-002

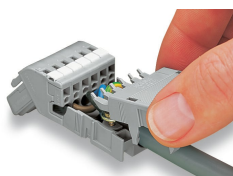
WSB marking card; as card; not stretchable; plain; snap-on type; yellow

Installation Notes

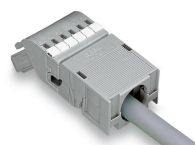
Installation



2- to 5-pole strain relief housings feature one cable outlet (rear side).
6- to 7-pole strain relief housings feature one cable outlet (rear side).
8- to 9-pole strain relief housings feature two cable outlets and one cover.
10- to 16-pole strain relief housings feature three cable outlets and two covers.

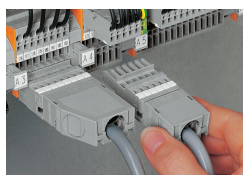


Snapping on a strain relief housing.



Snap-on type strain relief housing, consists of strain relief support and housing, 6-pole and 1-conductor female plugs, angled, 6-pole

Application



Application
Snap-on type strain relief housings for 769 Series