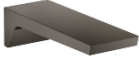









**CL.1 Bath spout for wall mounting - Brushed Dark Platinum**

CL.1

13 801 705 Product version from 3/9/2015



- 205mm projection
- rectangular spray pattern with 55 individual jets
- hole diameter 37 mm
- 1/2" connection
- plug-link mounting
- max. flow 24.6 l/min at 3 bar flow pressure
- WRAS

	Brushed Dark Platinum	13 801 705-99
	Chrome	13 801 705-00
	Brushed Platinum	13 801 705-06
	Dark Chrome	13 801 705-19
	Brushed Light Gold (PVD)	13 801 705-27
	Brushed Champagne (22kt Gold)	13 801 705-46
	Champagne (22kt Gold)	13 801 705-47

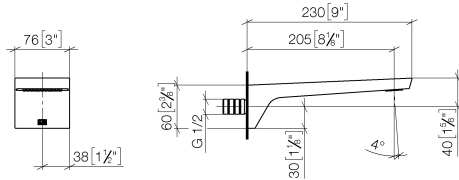
**Recommended miscellaneous**



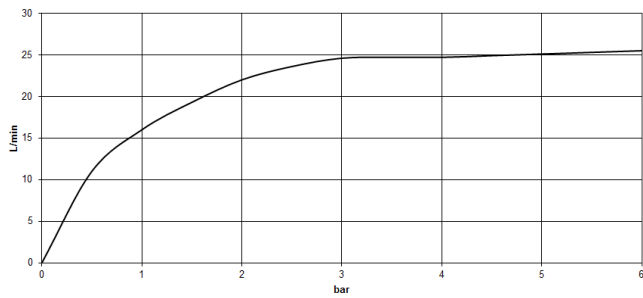
- Concealed wall elbow -** 35 085 970 90
- min. recess depth 90 mm
  - max. recess depth 163 mm

13 801 705 Product version from 3/9/2015

mm [inches]



**Flow rate chart**



**Codes & Standards**

ASME A112.18.1	cUPC	DIN 4109	ISO 3822
Scottish Water Byelaws	UK Water Supply Regulations	Ü-Zeichen	



## CL.1 Bath spout for wall mounting - Brushed Dark Platinum

CL.1

13 801 705 Product version from 3/9/2015

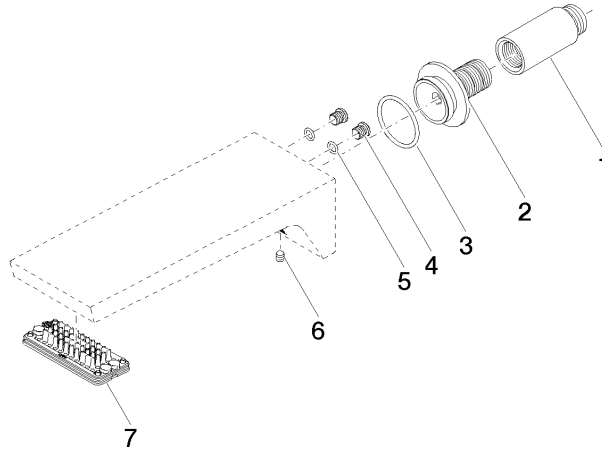
### Certificates and sustainability

WRAS\_1512

LGA\_28

IAPMO\_4976

EPD-DOR-20230287  
-IBA1-EN  
Environmental.prod  
uct-declarat



Spare parts list

No.	Item Number	Name	Quantity used	Delivery time
5	09 14 10 132 90	O-Ring EPDM 70 6,0 x 1,5 mm -	2.00	14
2	09 24 03 180 90	Nipple Ø 33 x 47,5 mm -	1.00	14
1	09 24 03 081 10 90	Extension 1/2" x 50 mm -	1.00	14
4	09 31 20 027 10-00	Plug M8 x 1 - Chrome	2.00	20
7	90 11 02 299 00 90	Aerator 73 x 17 x 33 mm -	1.00	14
6	90 31 11 004 00 90	grub screw with hexagon socket M5 x 8 mm -	1.00	14
3	09 14 10 119 90	O-Ring EPDM 70 33,0 x 2,5 mm -	1.00	14