

## PRODUCT DATASHEET

### HQI-E 250 W/D PRO

POWERSTAR HQI®-E coated 250...400 W | Metal halide lamps with quartz technology for enclosed luminaires



#### Areas of application

- Factories and workshops
- Exhibition halls and trade fairs
- Sports halls and multi-purpose halls
- Approved only for use in enclosed luminaires
- Outdoor applications only in suitable luminaires

#### Product benefits

- E40 screw base for simple lamp handling
- UV values significantly below the maximum permitted thresholds to IEC 61167 thanks to UV filter

#### Product features

- POWERSTAR® quartz technology
- Light colors: neutral white (NDL), daylight (D)



## TECHNICAL DATA

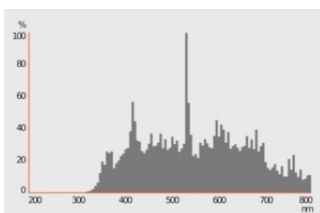
### Electrical data

Nominal wattage	250 W
Construction wattage	260.00 W
Nominal voltage	105 V
Ignition voltage	4.0/5.0 kVp <sup>1)</sup>
Operating mode	Conventional control gear (CCG) and ignitor
Nominal current	3 A
PFC capacitor at 50 Hz	32 µF

1) Minimum / Maximum

### Photometrical data

Luminous flux	18000 lm
Luminous efficacy	69 lm/W
Color temperature	5500 K
Color rendering index Ra	≤ 90
Light color	955
Rated LLMF at 2,000 h	0.92
Rated LLMF at 4,000 h	0.90
Rated LLMF at 6,000 h	0.87
Rated LLMF at 8,000 h	0.85
Rated LLMF at 12,000 h	0.81
UV protection	Yes



### Dimensions & Weight

Overall length	226.00 mm
Diameter	90,0 mm

Product weight	160.00 g
----------------	----------

### Temperatures & operating conditions

Maximum permitted outer bulb temperature	400 °C
Maximum permitted base edge temperature	250 °C

### Lifespan

Rated lamp survival factor at 2,000 h	0.96
Rated lamp survival factor at 4,000 h	0.94
Rated lamp survival factor at 6,000 h	0.93
Rated lamp survival factor at 8,000 h	0.88
Rated lamp survival factor at 12,000 h	0.81
Lifespan B50	16000 h

### Additional product data

Base (standard designation)	E40
Mercury content	21.0 mg
Design / version	Coated

### Capabilities

Dimmable	No
Burning position	Any
Enclosed luminaire required	Yes
Hot restart	No

### Certificates & Standards

Energy efficiency class	G
Energy consumption	260.00 kWh/1000h

### Country-specific categorizations





ILCOS	ME/UB-250/952-H/E/SL-E40-91/226
Order reference	HQI-E 250W/D PR

### Energy labelling regulation data acc EU 2019/2015

Lighting technology used	MH
Non-directional or directional	NDLS
Mains or non-mains	NMLS
Light source cap-type (or other electric interface)	E40

Connected light source (CLS)	No
Color-tuneable light source	No
Envelope	NON_CLEAR
High luminance light source	No
Anti-glare shield	No
Correlated colour temperature type	SINGLE_VALUE
Claim of equivalent power	No
Length	226.00 mm
Height	90,0 mm
Width	90,0 mm
Chromaticity coordinate x	0,340
Chromaticity coordinate y	0,345
Beam angle correspondence	SPHERE_360
EPREL ID	546553
Model number	AC34327

DOWNLOAD DATA

Documents and certificates	
	User instruction
	Declarations Of Conformity CE
	Certificates
Photometric and lighting design files	
	Spectral power distribution

LOGISTICAL DATA

Product code	Packaging unit (Pieces/Unit)	Dimensions (length x width x height)	Gross weight	Volume
4008321677907	Round wrap 1	95 mm x 95 mm x 240 mm	191.00 g	2.17 dm <sup>3</sup>
4008321677914	Shipping box 12	426 mm x 331 mm x 252 mm	2879.00 g	35.53 dm <sup>3</sup>

The mentioned product code describes the smallest quantity unit which can be ordered. One shipping unit can contain one or more single products.

When placing an order, for the quantity please enter single or multiples of a shipping unit.

---

## DISCLAIMER

Subject to change without notice. Errors and omission excepted. Always make sure to use the most recent release.