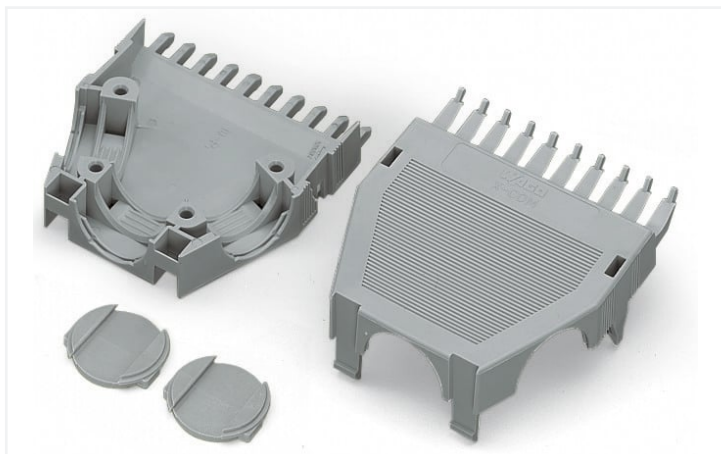


# Data Sheet | Item Number: 769-1611

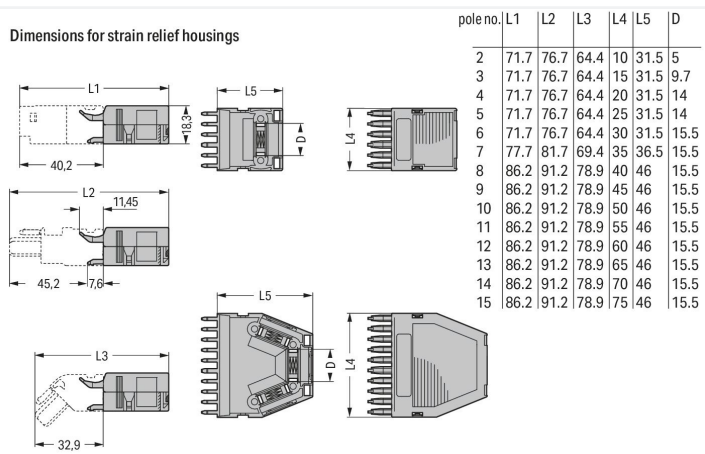
Strain relief housing; for female and male connectors; 2 parts; Pin spacing 5 mm; 11-pole; gray

<https://www.wago.com/769-1611>



Color: ■ gray

Similar to illustration



Dimensions in mm  
Dimensions in mm

## Connection data

### Connection 1

Pole number 11

## Physical data

Width 55 mm / 2.165 inches  
Height 18.3 mm / 0.72 inches  
Depth 46 mm / 1.811 inches

## Material data

Note (material data)

[Information on material specifications can be found here](https://www.wago.com/us/material-specifications)

Color gray  
Fire load 0.498 MJ  
Weight 12.7 g

## Commercial data

Product Group 18 (X-COM-System)  
eCl@ss 10.0 27-14-11-92  
eCl@ss 9.0 27-14-11-92  
ETIM 8.0 EC002848  
ETIM 7.0 EC002848  
PU (SPU) 25 pcs  
Packaging type Box  
Country of origin DE  
GTIN 4017332729703  
Customs tariff number 39269097900

**Environmental Product Compliance**

RoHS Compliance Status Compliant, No Exemption

**Downloads**

**Environmental Product Compliance**

**Compliance Search**  
 Environmental Product Compliance 769-1611 [↓](#)

**Documentation**

**Additional Information**  
 Technical Section pdf 2240.62 KB [↓](#)

Bid Text				
769-1611	19.02.2019	xml	2.64 KB	<a href="#">↓</a>
769-1611	23.05.2017	doc	23.00 KB	<a href="#">↓</a>

**CAD/CAE-Data**

**CAD data**  
 2D/3D Models 769-1611 [↓](#)

CAE data	
EPLAN Data Portal 769-1611	<a href="#">↓</a>
WSCAD Universe 769-1611	<a href="#">↓</a>
ZUKEN Portal 769-1611	<a href="#">↓</a>

**1 Compatible Products**

**1.1 Optional Accessories**

**1.1.1 Installation**

**1.1.1.1 Mounting accessories**



**Item No.: 209-174**  
 Cable clamp; for strain relief; 7 or more poles



**Item No.: 209-173**  
 Fixing screw; for cable clamp; 7 or more poles

## 1.1.2 Marking

### 1.1.2.1 Marker



**Item No.: 209-501/000-006**

WSB marking card; as card; not stretchable; plain; snap-on type; blue



**Item No.: 209-501/000-007**

WSB marking card; as card; not stretchable; plain; snap-on type; gray



**Item No.: 209-501/000-023**

WSB marking card; as card; not stretchable; plain; snap-on type; green



**Item No.: 209-501/000-017**

WSB marking card; as card; not stretchable; plain; snap-on type; light green



**Item No.: 209-501/000-012**

WSB marking card; as card; not stretchable; plain; snap-on type; orange



**Item No.: 209-501/000-005**

WSB marking card; as card; not stretchable; plain; snap-on type; red



**Item No.: 209-501/000-024**

WSB marking card; as card; not stretchable; plain; snap-on type; violet



**Item No.: 209-501**

WSB marking card; as card; not stretchable; plain; snap-on type; white

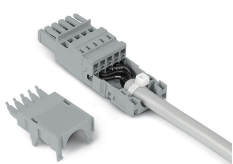


**Item No.: 209-501/000-002**

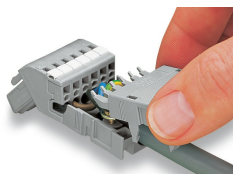
WSB marking card; as card; not stretchable; plain; snap-on type; yellow

## Installation Notes

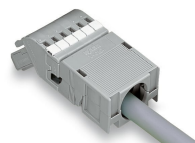
### Installation



2- to 5-pole strain relief housings feature one cable outlet (rear side).  
6- to 7-pole strain relief housings feature one cable outlet (rear side).  
8- to 9-pole strain relief housings feature two cable outlets and one cover.  
10- to 16-pole strain relief housings feature three cable outlets and two covers.

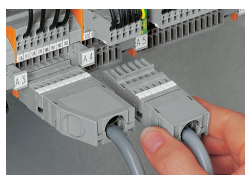


Snapping on a strain relief housing.



Snap-on type strain relief housing, consists of strain relief support and housing, 6-pole and 1-conductor female plugs, angled, 6-pole

## Application



Application  
Snap-on type strain relief housings for 769 Series