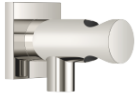


Wall elbow with integrated shower holder - Platinum








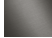
SERIES SPECIFIC

28 490 970 Product version from 6/1/2024



- 3/8" shower outlet
- rosette 60 x 60 mm
- 1/2" connection
- WRAS

Intrinsic protection against back flow.

	Platinum	28 490 970-08
	Chrome	28 490 970-00
	Brushed Platinum	28 490 970-06
	Dark Chrome	28 490 970-19
	Brushed Light Gold (PVD)	28 490 970-27
	Brushed Durabrass (23kt Gold)	28 490 970-28
	Matte Black	28 490 970-33
	Brushed Gold (PVD)	28 490 970-37
	Brushed Dark Brass (PVD)	28 490 970-39
	Brushed Bronze (PVD)	28 490 970-42
	Brushed Dark Bronze (PVD)	28 490 970-43
	Brushed Champagne (22kt Gold)	28 490 970-46
	Champagne (22kt Gold)	28 490 970-47
	Brushed Chrome	28 490 970-93
	Brushed Dark Platinum	28 490 970-99

Recommended miscellaneous



- Concealed wall elbow -**
- min. recess depth 90 mm
 - max. recess depth 163 mm

35 085 970 90

Recommended miscellaneous

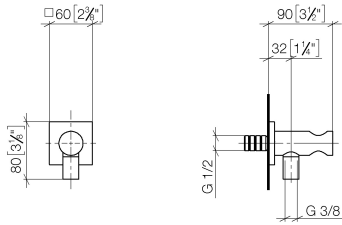


- Concealed wall elbow -**
- min. recess depth 90 mm
 - max. recess depth 163 mm

35 085 970 90

28 490 970 Product version from 6/1/2024

mm [inches]



Codes & Standards

EN 1717

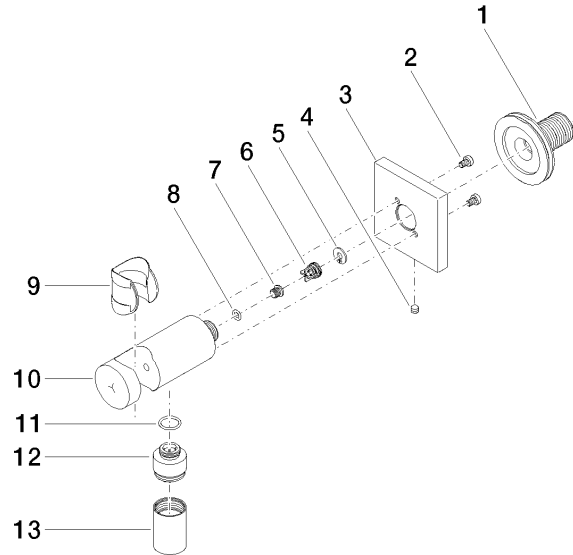
Scottish Water
Byelaws

UK Water Supply
Regulations

Certificates and sustainability

Belgaqua_21-024-2 WRAS_250402

Belgaqua_25-344-2



Spare parts list

No.	Item Number	Name	Quantity used	Delivery time
	6 09 23 01 131 90	Back-flow preventer without limitation Ø 10 x 10,5 mm -	1.00	14
	9 09 18 40 216 90	Sleeve 29 x 32 x 29 mm -	1.00	14
	7 09 30 30 113 20 90	Mounting Ø 8 x 6,5 mm -	1.00	14
	1 90 24 03 280 00 90	Connection -	1.00	14
	13 90 21 02 069 00-08	Cover/sleeve M20 x 1 - Platinum	1.00	54
	12 09 24 03 279-08	Nipple Ø 22 x 21 mm - Platinum	1.00	54
	5 09 16 01 023 90	Ring Retaining ring Ø 11 x 1 mm -	1.00	14
	10 09 11 03 124-08	Holder Ø 30 x 93 mm - Platinum	1.00	54
	8 09 14 10 001 90	O-Ring EPDM 70 4,5 x 1,5 mm -	1.00	14
	3 09 27 97 043-08	Rosette 60 x 60 x 9 x Ø 18 mm - Platinum	1.00	54
	2 09 30 30 037 90	Mounting Cylinder head screw with hexagon socket with low profile, without key guide M4 x 6 mm -	2.00	14
	11 09 14 10 213 90	O-Ring EPDM 70 12,0 x 1,5 mm -	1.00	14
	4 09 31 11 112 90	Mounting Threaded pin with hexagon socket with point M5 x 6 mm -	1.00	-
Spare part can no longer be ordered, please order the replacement item				
	043111120090	Mounting Threaded pin M5 x 6 mm -		