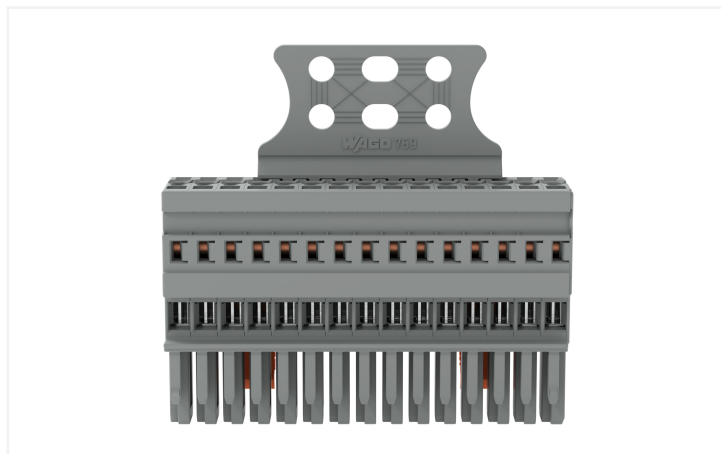
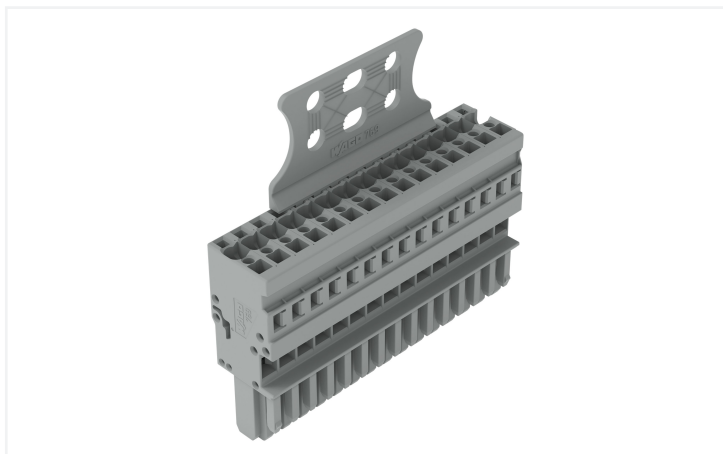


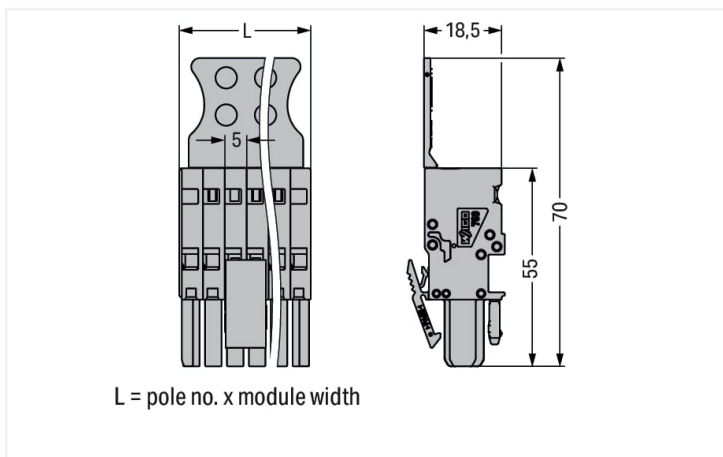
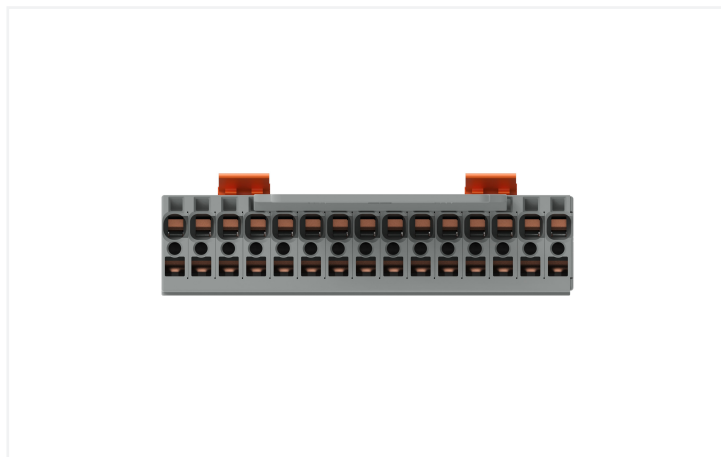
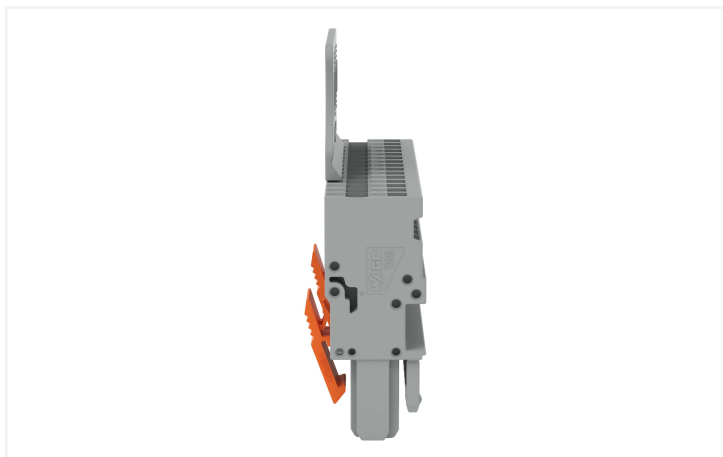
# Data Sheet | Item Number: 769-115/145-000

1-conductor female connector; CAGE CLAMP®; 4 mm²; Pin spacing 5 mm; 15-pole;  
coding finger; Centered locking levers; Strain relief plate; 4,00 mm²; gray

<https://www.wago.com/769-115/145-000>



Color: ■ gray





| Notes              |   |
|--------------------|---|
| Safety Information | According to EN 61984, pluggable connectors without current interrupting capacity must not be mated or unmated when live or under load. |

| Electrical data                 |   |
|---------------------------------|---|
| Ratings per IEC/EN              |   |
| Ratings per                     | IEC/EN 61984  |
| Nominal voltage (III/3)         | 500 V   |
| Rated impulse voltage (III / 3) | 6 kV  |
| Rated current                   | 32 A  |
| Legend (ratings)                | (III / 3) △ Overvoltage category III / Pollution degree 3 |

| Connection data                 |                                   |
|---------------------------------|-----------------------------------|
| Clamping units                  | 15                                |
| Total number of potentials      | 15                                |
| Connection 1                    |                                   |
| Connection technology           | CAGE CLAMP®                       |
| Actuation type                  | Operating tool                    |
| Connectable conductor materials | Copper                            |
| Nominal cross-section           | 4 mm² / 12 AWG                    |
| Solid conductor                 | 0.08 ... 4 mm² / 28 ... 12 AWG    |
| Fine-stranded conductor         | 0.08 ... 4 mm² / 28 ... 12 AWG    |
| Strip length                    | 8 ... 9 mm / 0.31 ... 0.35 inches |
| Pole number                     | 15                                |
| Wiring direction                | Front-entry wiring                |

| Physical data           |                        |
|-------------------------|------------------------|
| Width                   | 75 mm / 2.953 inches   |
| Height                  | 70 mm / 2.756 inches   |
| Height from the surface | 55 mm / 2.164 inches   |
| Depth                   | 18.5 mm / 0.728 inches |
| Module width            | 5 mm / 0.197 inches    |

| Mechanical data  |              |
|--|--------------|
| Variable coding  | Yes          |
| Direct ground contact to DIN-rail/drilled hole/housing | No           |
| Marking level  | Side marking |
| Anti-rotation protection                               | Yes          |

| Plug-in connection                 |                         |
|------------------------------------|-------------------------|
| Contact type (pluggable connector) | Female connector/socket |
| Connector (connection type)        | for conductor           |
| Mismating protection               | No                      |
| Locking lever                      | Yes                     |
| Strain relief                      | Strain relief plate     |



| Material data                      |  |
|------------------------------------|--|
| Note (material data)               | <a href="#">Information on material specifications can be found here</a> |
| Color                              | gray   |
| Material group                     | I  |
| Insulation material (main housing) | Polyamide (PA66)   |
| Flammability class per UL94        | V0   |
| Fire load                          | 1.096 MJ   |
| Halogen-free                       | Yes  |
| Weight                             | 50 g   |

| Environmental requirements       |                 |
|----------------------------------|-----------------|
| Processing temperature           | -35 ... +85 °C  |
| Continuous operating temperature | -60 ... +105 °C |

| Commercial data       |               |
|-----------------------|---------------|
| ETIM 8.0              | EC001284      |
| ETIM 7.0              | EC001284      |
| PU (SPU)              | 10 pcs        |
| Country of origin     | DE            |
| GTIN                  | 4066966467666 |
| Customs tariff number | 85366990990   |

| Environmental Product Compliance |                        |
|----------------------------------|------------------------|
| RoHS Compliance Status           | Compliant,No Exemption |

Approvals / Certificates

General approvals



| Approval         | Standard | Certificate Name |
|------------------|----------|------------------|
| CSA<br>CSA Group | C22.2    | 1101144          |

Downloads

Environmental Product Compliance

| Compliance Search                                      |  |
|--|--|
| Environmental Product<br>Compliance<br>769-115/145-000 |  |



Documentation

|                        |                   |  |
|------------------------|-------------------|--|
| Additional Information |                   |  |
| Technical Section      | pdf<br>2246.92 KB |  |

CAD/CAE-Data

|                                 |  |  |
|---------------------------------|--|--|
| CAD data                        |  |  |
| 2D/3D Models<br>769-115/145-000 |  |  |

1 Compatible Products

1.1 System counterpart

1.1.1 Carrier terminal block for fuses and electronic modules



**Item No.: 769-181**  
1-conductor/1-pin carrier terminal block; with 2 jumper positions; for DIN-rail 35 x 15 and 35 x 7.5; 4 mm²; CAGE CLAMP®; 4,00 mm²; gray



**Item No.: 769-161**  
2-pin carrier terminal block; with 2 jumper positions; for DIN-rail 35 x 15 and 35 x 7.5; gray

1.1.2 Component Terminal Block with Diode



**Item No.: 769-218/281-410**  
1-conductor/1-pin component carrier terminal block; with 2 jumper positions; with diode 1N4007; anode, left side; for DIN-rail 35 x 15 and 35 x 7.5; 4 mm²; CAGE CLAMP®; 4,00 mm²; gray



**Item No.: 769-218/281-411**  
1-conductor/1-pin component carrier terminal block; with 2 jumper positions; with diode 1N4007; anode, right side; for DIN-rail 35 x 15 and 35 x 7.5; 4 mm²; CAGE CLAMP®; 4,00 mm²; gray



**Item No.: 769-238/281-410**  
1-conductor/1-pin component carrier terminal block; with diode 1N4007; anode, left side; for DIN-rail 35 x 15 and 35 x 7.5; 4 mm²; CAGE CLAMP®; 4,00 mm²; gray



**Item No.: 769-238/281-411**  
1-conductor/1-pin component carrier terminal block; with diode 1N4007; anode, right side; for DIN-rail 35 x 15 and 35 x 7.5; 4 mm²; CAGE CLAMP®; 4,00 mm²; gray



**Item No.: 769-228/281-410**  
2-pin component carrier block; with diode 1N4007; anode, left side; for DIN-rail 35 x 15 and 35 x 7.5; 4 mm²; gray



**Item No.: 769-228/281-411**  
2-pin component carrier block; with diode 1N4007; anode, right side; for DIN-rail 35 x 15 and 35 x 7.5; 4 mm²; gray

1.1.3 Component Terminal Block with LED



**Item No.: 769-239/281-413**  
1-conductor/1-pin component carrier terminal block; LED (red); 24 VDC; for DIN-rail 35 x 15 and 35 x 7.5; 4 mm²; CAGE CLAMP®; 4,00 mm²; gray



**Item No.: 769-239/281-434**  
1-conductor/1-pin component carrier terminal block; LED (red); 24 VDC; for DIN-rail 35 x 15 and 35 x 7.5; 4 mm²; CAGE CLAMP®; 4,00 mm²; gray



**Item No.: 769-219/281-413**  
1-conductor/1-pin component carrier terminal block; with 2 jumper positions; LED (red); 24 VDC; for DIN-rail 35 x 15 and 35 x 7.5; 4 mm²; CAGE CLAMP®; 4,00 mm²; gray



**Item No.: 769-219/281-434**  
1-conductor/1-pin component carrier terminal block; with 2 jumper positions; LED (red); 24 VDC; for DIN-rail 35 x 15 and 35 x 7.5; 4 mm²; CAGE CLAMP®; 4,00 mm²; gray



**Item No.: 769-229/281-413**  
2-pin component carrier block; LED (red); 24 VDC; for DIN-rail 35 x 15 and 35 x 7.5; gray



**Item No.: 769-229/281-434**  
2-pin component carrier block; LED (red); 24 VDC; for DIN-rail 35 x 15 and 35 x 7.5; gray



**Item No.: 769-209/281-413**  
2-pin component carrier block; with 2 jumper positions; LED (red); 24 VDC; for DIN-rail 35 x 15 and 35 x 7.5; gray



**Item No.: 769-209/281-434**  
2-pin component carrier block; with 2 jumper positions; LED (red); 24 VDC; for DIN-rail 35 x 15 and 35 x 7.5; gray



1.1.4 Disconnect terminal block



**Item No.: 769-232**  
1-conductor/1-pin disconnect carrier terminal block; for DIN-rail 35 x 15 and 35 x 7.5; 4 mm<sup>2</sup>; CAGE CLAMP®; 4,00 mm<sup>2</sup>; gray



**Item No.: 769-212**  
1-conductor/1-pin disconnect carrier terminal block; with 2 jumper positions; for DIN-rail 35 x 15 and 35 x 7.5; 4 mm<sup>2</sup>; CAGE CLAMP®; 4,00 mm<sup>2</sup>; gray



**Item No.: 769-233**  
1-conductor/1-pin disconnect carrier terminal block; with shield contact; for DIN-rail 35 x 15 and 35 x 7.5; 4 mm<sup>2</sup>; CAGE CLAMP®; 4,00 mm<sup>2</sup>; gray



**Item No.: 769-213**  
1-conductor/1-pin disconnect carrier terminal block; with shield contact; with 2 jumper positions; for DIN-rail 35 x 15 and 35 x 7.5; 4 mm<sup>2</sup>; CAGE CLAMP®; 4,00 mm<sup>2</sup>; gray



**Item No.: 769-222**  
2-pin disconnect carrier terminal block; for DIN-rail 35 x 15 and 35 x 7.5; gray



**Item No.: 769-202**  
2-pin disconnect carrier terminal block; with 2 jumper positions; for DIN-rail 35 x 15 and 35 x 7.5; gray



**Item No.: 769-223**  
2-pin disconnect carrier terminal block; with shield contact; for DIN-rail 35 x 15 and 35 x 7.5; gray



**Item No.: 769-203**  
2-pin disconnect carrier terminal block; with shield contact; with 2 jumper positions; for DIN-rail 35 x 15 and 35 x 7.5; gray

1.1.5 Double-deck terminal block



**Item No.: 870-127**  
1-conductor/1-pin double deck receptacle terminal block; Ground conductor/through terminal block; 2.5 mm<sup>2</sup>; PE/L; for DIN-rail 35 x 15 and 35 x 7.5; CAGE CLAMP®; 2,50 mm<sup>2</sup>; gray



**Item No.: 870-117**  
1-conductor/1-pin double deck receptacle terminal block; Ground conductor/through terminal block; 2.5 mm<sup>2</sup>; PE/N; for DIN-rail 35 x 15 and 35 x 7.5; CAGE CLAMP®; 2,50 mm<sup>2</sup>; gray



**Item No.: 870-101**  
1-conductor/1-pin double deck receptacle terminal block; Through/through terminal block; 2.5 mm<sup>2</sup>; L/L; for DIN-rail 35 x 15 and 35 x 7.5; CAGE CLAMP®; 2,50 mm<sup>2</sup>; gray



**Item No.: 870-103**  
1-conductor/1-pin double deck receptacle terminal block; Through/through terminal block; 2.5 mm<sup>2</sup>; L/N; for DIN-rail 35 x 15 and 35 x 7.5; CAGE CLAMP®; 2,50 mm<sup>2</sup>; gray



**Item No.: 870-102**  
1-conductor/1-pin double deck receptacle terminal block; Through/through terminal block; 2.5 mm<sup>2</sup>; N/L; for DIN-rail 35 x 15 and 35 x 7.5; CAGE CLAMP®; 2,50 mm<sup>2</sup>; gray



**Item No.: 870-1131**  
2-conductor/2-pin double-deck carrier terminal; 2-conductor/1-pin through terminal block; 2.5 mm<sup>2</sup>; L/L; for DIN-rail 35 x 15 and 35 x 7.5; CAGE CLAMP®; 2,50 mm<sup>2</sup>; gray



**Item No.: 870-108**  
2-conductor/2-pin, double-deck carrier terminal block; 2-conductor/2-pin through terminal block; 2.5 mm<sup>2</sup>; L; internal commoning; conductor entry with violet marking; for DIN-rail 35 x 15 and 35 x 7.5; CAGE CLAMP®; 2,50 mm<sup>2</sup>; gray



**Item No.: 870-131**  
2-conductor/2-pin, double-deck carrier terminal block; Through/through terminal block; 2.5 mm<sup>2</sup>; L/L; for DIN-rail 35 x 15 and 35 x 7.5; CAGE CLAMP®; 2,50 mm<sup>2</sup>; gray



**Item No.: 870-151**  
2-Pin/2-pin double deck receptacle terminal block; Through/through terminal block; L/L; for DIN-rail 35 x 15 and 35 x 7.5; CAGE CLAMP®; gray



**Item No.: 870-1138**  
4-conductor/2-pin double-deck carrier terminal block; 4-conductor/2-pin through terminal block; 2.5 mm<sup>2</sup>; L/L; internal commoning; conductor entry with violet marking; for DIN-rail 35 x 15 and 35 x 7.5; CAGE CLAMP®; 2,50 mm<sup>2</sup>; gray



**Item No.: 870-138**  
4-conductor/4-pin, double-deck carrier terminal block; 4-conductor/4-pin through terminal block; 2.5 mm<sup>2</sup>; L; internal commoning; conductor entry with violet marking; for DIN-rail 35 x 15 and 35 x 7.5; CAGE CLAMP®; 2,50 mm<sup>2</sup>; gray



**Item No.: 870-158**  
4-pin, double-deck carrier terminal block; 4-pin through terminal block; L; internal commoning; female plug conductor entry with violet marking; for DIN-rail 35 x 15 and 35 x 7.5; gray

1.1.6 Ground terminal block



**Item No.: 870-127**  
1-conductor/1-pin double deck receptacle terminal block; Ground conductor/through terminal block; 2.5 mm<sup>2</sup>; PE/L; for DIN-rail 35 x 15 and 35 x 7.5; CAGE CLAMP®; 2,50 mm<sup>2</sup>; gray



**Item No.: 870-117**  
1-conductor/1-pin double deck receptacle terminal block; Ground conductor/through terminal block; 2.5 mm<sup>2</sup>; PE/N; for DIN-rail 35 x 15 and 35 x 7.5; CAGE CLAMP®; 2,50 mm<sup>2</sup>; gray

1.1.7 Shield termination



**Item No.: 769-231**  
1-conductor/1-pin carrier terminal block; with shield contact; for DIN-rail 35 x 15 and 35 x 7.5; 4 mm<sup>2</sup>; CAGE CLAMP®; 4,00 mm<sup>2</sup>; gray



**Item No.: 769-233**  
1-conductor/1-pin disconnect carrier terminal block; with shield contact; for DIN-rail 35 x 15 and 35 x 7.5; 4 mm<sup>2</sup>; CAGE CLAMP®; 4,00 mm<sup>2</sup>; gray



**Item No.: 769-213**  
1-conductor/1-pin disconnect carrier terminal block; with shield contact; with 2 jumper positions; for DIN-rail 35 x 15 and 35 x 7.5; 4 mm<sup>2</sup>; CAGE CLAMP®; 4,00 mm<sup>2</sup>; gray



**Item No.: 769-211**  
2-conductor/2-pin carrier terminal block; with shield contact; for DIN-rail 35 x 15 and 35 x 7.5; 4 mm<sup>2</sup>; CAGE CLAMP®; 4,00 mm<sup>2</sup>; gray



1.1.7 Shield termination



**Item No.: 769-221**  
2-pin carrier terminal block; with shield contact; for DIN-rail 35 x 15 and 35 x 7.5; gray

**Item No.: 769-223**  
2-pin disconnect carrier terminal block; with shield contact; for DIN-rail 35 x 15 and 35 x 7.5; gray

**Item No.: 769-203**  
2-pin disconnect carrier terminal block; with shield contact; with 2 jumper positions; for DIN-rail 35 x 15 and 35 x 7.5; gray

**Item No.: 769-201**  
4-pin carrier terminal block; with shield contact; for DIN-rail 35 x 15 and 35 x 7.5; gray

1.1.8 Through terminal block



**Item No.: 769-176**  
1-conductor/1-pin carrier terminal block; for DIN-rail 35 x 15 and 35 x 7.5; 4 mm<sup>2</sup>; CAGE CLAMP®; 4,00 mm<sup>2</sup>; gray

**Item No.: 769-231**  
1-conductor/1-pin carrier terminal block; with shield contact; for DIN-rail 35 x 15 and 35 x 7.5; 4 mm<sup>2</sup>; CAGE CLAMP®; 4,00 mm<sup>2</sup>; gray

**Item No.: 769-214**  
1-conductor/1-pin disconnect carrier terminal block; with 3 jumper positions; for DIN-rail 35 x 15 and 35 x 7.5; 4 mm<sup>2</sup>; 4,00 mm<sup>2</sup>; gray

**Item No.: 870-127**  
1-conductor/1-pin double deck receptacle terminal block; Ground conductor/through terminal block; 2.5 mm<sup>2</sup>; PE/L; for DIN-rail 35 x 15 and 35 x 7.5; CAGE CLAMP®; 2,50 mm<sup>2</sup>; gray



**Item No.: 870-117**  
1-conductor/1-pin double deck receptacle terminal block; Ground conductor/through terminal block; 2.5 mm<sup>2</sup>; PE/N; for DIN-rail 35 x 15 and 35 x 7.5; CAGE CLAMP®; 2,50 mm<sup>2</sup>; gray

**Item No.: 870-101**  
1-conductor/1-pin double deck receptacle terminal block; Through/through terminal block; 2.5 mm<sup>2</sup>; L/L; for DIN-rail 35 x 15 and 35 x 7.5; CAGE CLAMP®; 2,50 mm<sup>2</sup>; gray

**Item No.: 870-103**  
1-conductor/1-pin double deck receptacle terminal block; Through/through terminal block; 2.5 mm<sup>2</sup>; L/N; for DIN-rail 35 x 15 and 35 x 7.5; CAGE CLAMP®; 2,50 mm<sup>2</sup>; gray

**Item No.: 870-102**  
1-conductor/1-pin double deck receptacle terminal block; Through/through terminal block; 2.5 mm<sup>2</sup>; N/L; for DIN-rail 35 x 15 and 35 x 7.5; CAGE CLAMP®; 2,50 mm<sup>2</sup>; gray



**Item No.: 769-251**  
2-conductor/1-pin carrier terminal block; 4 mm<sup>2</sup>; for DIN-rail 35 x 15 and 35 x 7.5; CAGE CLAMP®; 4,00 mm<sup>2</sup>; gray

**Item No.: 769-171**  
2-conductor/2-pin carrier terminal block; for DIN-rail 35 x 15 and 35 x 7.5; 4 mm<sup>2</sup>; CAGE CLAMP®; 4,00 mm<sup>2</sup>; gray

**Item No.: 769-211**  
2-conductor/2-pin carrier terminal block; with shield contact; for DIN-rail 35 x 15 and 35 x 7.5; 4 mm<sup>2</sup>; CAGE CLAMP®; 4,00 mm<sup>2</sup>; gray

**Item No.: 870-1131**  
2-conductor/2-pin double-deck carrier terminal; 2-conductor/1-pin through terminal block; 2.5 mm<sup>2</sup>; L/L; for DIN-rail 35 x 15 and 35 x 7.5; CAGE CLAMP®; 2,50 mm<sup>2</sup>; gray



**Item No.: 870-108**  
2-conductor/2-pin, double-deck carrier terminal block; 2-conductor/2-pin through terminal block; 2.5 mm<sup>2</sup>; L; internal commoning; conductor entry with violet marking; for DIN-rail 35 x 15 and 35 x 7.5; CAGE CLAMP®; 2,50 mm<sup>2</sup>; gray

**Item No.: 870-131**  
2-conductor/2-pin, double-deck carrier terminal block; Through/through terminal block; 2.5 mm<sup>2</sup>; L/L; for DIN-rail 35 x 15 and 35 x 7.5; CAGE CLAMP®; 2,50 mm<sup>2</sup>; gray

**Item No.: 769-156**  
2-pin carrier terminal block; for DIN-rail 35 x 15 and 35 x 7.5; gray

**Item No.: 769-221**  
2-pin carrier terminal block; with shield contact; for DIN-rail 35 x 15 and 35 x 7.5; gray



**Item No.: 870-151**  
2-Pin/2-pin double deck receptacle terminal block; Through/through terminal block; L/L; for DIN-rail 35 x 15 and 35 x 7.5; CAGE CLAMP®; gray

**Item No.: 870-1138**  
4-conductor/2-pin double-deck carrier terminal block; 4-conductor/2-pin through terminal block; 2.5 mm<sup>2</sup>; L/L; internal commoning; conductor entry with violet marking; for DIN-rail 35 x 15 and 35 x 7.5; CAGE CLAMP®; 2,50 mm<sup>2</sup>; gray

**Item No.: 870-138**  
4-conductor/4-pin, double-deck carrier terminal block; 4-conductor/4-pin through terminal block; 2.5 mm<sup>2</sup>; L; internal commoning; conductor entry with violet marking; for DIN-rail 35 x 15 and 35 x 7.5; CAGE CLAMP®; 2,50 mm<sup>2</sup>; gray

**Item No.: 769-151**  
4-pin carrier terminal block; for DIN-rail 35 x 15 and 35 x 7.5; gray



**Item No.: 769-201**  
4-pin carrier terminal block; with shield contact; for DIN-rail 35 x 15 and 35 x 7.5; gray

**Item No.: 870-158**  
4-pin, double-deck carrier terminal block; 4-pin through terminal block; L; internal commoning; female plug conductor entry with violet marking; for DIN-rail 35 x 15 and 35 x 7.5; gray



1.2 Optional Accessories

1.2.1 Cover

1.2.1.1 Cover



[Item No.: 769-436](#)  
Jumper cover; for 1-conductor female plugs; for 5 poles; gray

1.2.2 Ferrule

1.2.2.1 Ferrule



[Item No.: 216-301](#)  
Ferrule; Sleeve for 0.25 mm² / AWG 24; insulated; electro-tin plated; yellow



[Item No.: 216-302](#)  
Ferrule; Sleeve for 0.34 mm² / 22 AWG; insulated; electro-tin plated; light turquoise



[Item No.: 216-201](#)  
Ferrule; Sleeve for 0.5 mm² / 20 AWG; insulated; electro-tin plated; white



[Item No.: 216-101](#)  
Ferrule; Sleeve for 0.5 mm² / AWG 22; un-insulated; electro-tin plated; silver-colored



[Item No.: 216-202](#)  
Ferrule; Sleeve for 0.75 mm² / 18 AWG; insulated; electro-tin plated; gray



[Item No.: 216-102](#)  
Ferrule; Sleeve for 0.75 mm² / AWG 20; un-insulated; electro-tin plated; silver-colored



[Item No.: 216-203](#)  
Ferrule; Sleeve for 1 mm² / AWG 18; insulated; electro-tin plated; red



[Item No.: 216-103](#)  
Ferrule; Sleeve for 1 mm² / AWG 18; un-insulated; electro-tin plated



[Item No.: 216-204](#)  
Ferrule; Sleeve for 1.5 mm² / AWG 16; insulated; electro-tin plated; black



[Item No.: 216-104](#)  
Ferrule; Sleeve for 1.5 mm² / AWG 16; un-insulated; electro-tin plated; silver-colored



[Item No.: 216-206](#)  
Ferrule; Sleeve for 2.5 mm² / AWG 14; insulated; electro-tin plated; blue

1.2.3 Insulation stop

1.2.3.1 Insulation stop



[Item No.: 769-470](#)  
Insulation stop; 0.08 - 0.2 mm² "s" (0.14 mm² "f-st"); 5 pieces/strip; white



[Item No.: 769-471](#)  
Insulation stop; 0.25 - 0.5 mm²; 5 pieces/strip; light gray



[Item No.: 769-472](#)  
Insulation stop; 0.75 - 1 mm²; 5 pieces/strip; dark gray

1.2.4 Jumper

1.2.4.1 Jumper



[Item No.: 769-402](#)  
Jumper; insulated; gray

1.2.5 Locking system

1.2.5.1 Locking system



**Item No.: 769-428**  
Locking lever; for female connectors; 1 part; Pin spacing 5 mm; 1-pole; gray



**Item No.: 769-429**  
Locking lever; for female connectors; 1 part; Pin spacing 5 mm; 1-pole; orange

1.2.6 Marking

1.2.6.1 Label



**Item No.: 210-805**  
Labels; for Smart Printer; permanent adhesive; 6 x 15 mm; white



**Item No.: 210-805/000-002**  
Labels; for Smart Printer; permanent adhesive; 6 x 15 mm; yellow

1.2.6.2 Marker



**Item No.: 2009-145**  
Mini-WSB Inline; for Smart Printer; 1700 pieces on roll; stretchable 5 - 5.2 mm; plain; snap-on type; white



**Item No.: 248-501**  
Mini-WSB marking card; as card; not stretchable; plain; snap-on type; white

1.2.6.3 Marking strip



**Item No.: 210-831**  
Marking strips; on reel; 2.3 mm wide; plain; Self-adhesive; white



**Item No.: 210-832**  
Marking strips; on reel; 3 mm wide; plain; Self-adhesive; white



**Item No.: 210-834**  
Marking strips; on reel; 5 mm wide; plain; Self-adhesive; white

1.2.7 Protective warning marker

1.2.7.1 Cover



**Item No.: 280-415**  
Protective warning marker; for 5 terminal blocks; with high-voltage symbol, black; yellow

1.2.8 Strain relief

1.2.8.1 Strain relief



**Item No.: 769-410**  
Strain relief plate; for female and male connectors; 1 part; Pin spacing 5 mm; 1-pole; gray





1.2.9 Test and measurement

1.2.9.1 Testing accessories



Item No.: 210-136  
Test plug; 2 mm Ø; with 500 mm cable; red

1.2.10 Tool

1.2.10.1 Operating tool



Item No.: 210-490  
Operating tool



Item No.: 769-434  
Operating tool; made of insulating material; 1-way; loose; white