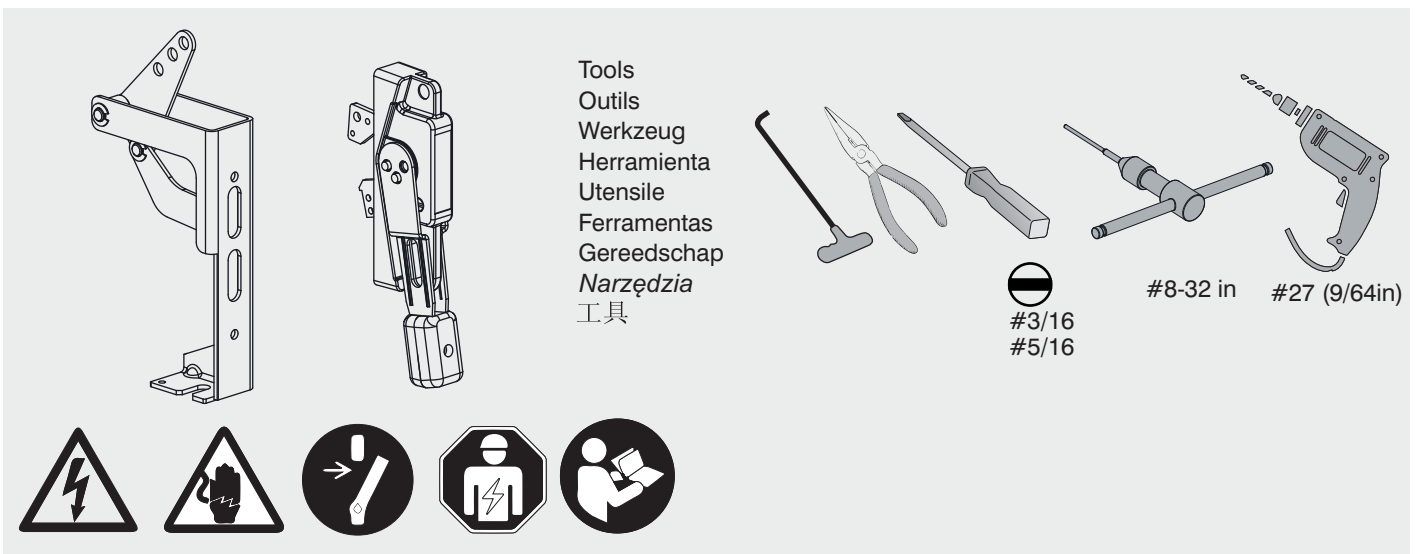


SACE Tmax XT

Cable Operator Handle XT1-XT2-XT3-XT4-XT5-XT6
 Poignée d'opérateur de câble XT1-XT2-XT3-XT4-XT5-XT6
 Kabelbetreiber XT1-XT2-XT3-XT4-XT5-XT6
 Kabelexploitant Handvat XT1-XT2-XT3-XT4-XT5-XT6
 Maniglia a cavo XT1-XT2-XT3-XT4-XT5-XT6
 Manija del operador del cable XT1-XT2-XT3-XT4-XT5-XT6
 Manipulo do operador de cabo XT1-XT2-XT3-XT4-XT5-XT6
 Uchwył kablowy operatora XT1-XT2-XT3-XT4-XT5-XT6
 电缆操作手柄 XT1-XT2-XT3-XT4-XT5-XT6



	1	1	1	1	1	1	1	6	2	2	1	1
	Type 1,3R,12,13 Handle Cat.No	Type 4/4X Handle Cat.No	Handle Length									
	1SDA115552R1	1SDA115554R1	6"									
	1SDA115553R1	1SDA115555R1	10"									

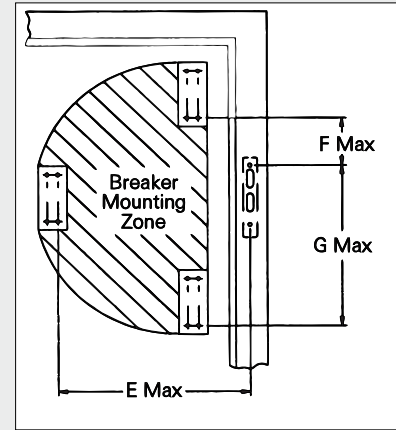
Maximum Dimensions in Inches

Enclosure Depth	36" Cable			48" Cable		
	E*	F	G	E*	F	G
8	13.5	4.0	15.0	25.5	16.0	27.0
10	13.0	5.0	14.8	25.0	17.0	26.8
12	12.8	6.0	14.5	24.8	17.0	26.5
16	10.5	4.5	14.2	22.5	16.5	26.2
18	8.5	3.5	12.6	20.5	15.5	24.6
20	—	0.5	10.0	22.0	15.0	24.0
24	—	—	—	19.5	14.0	22.0

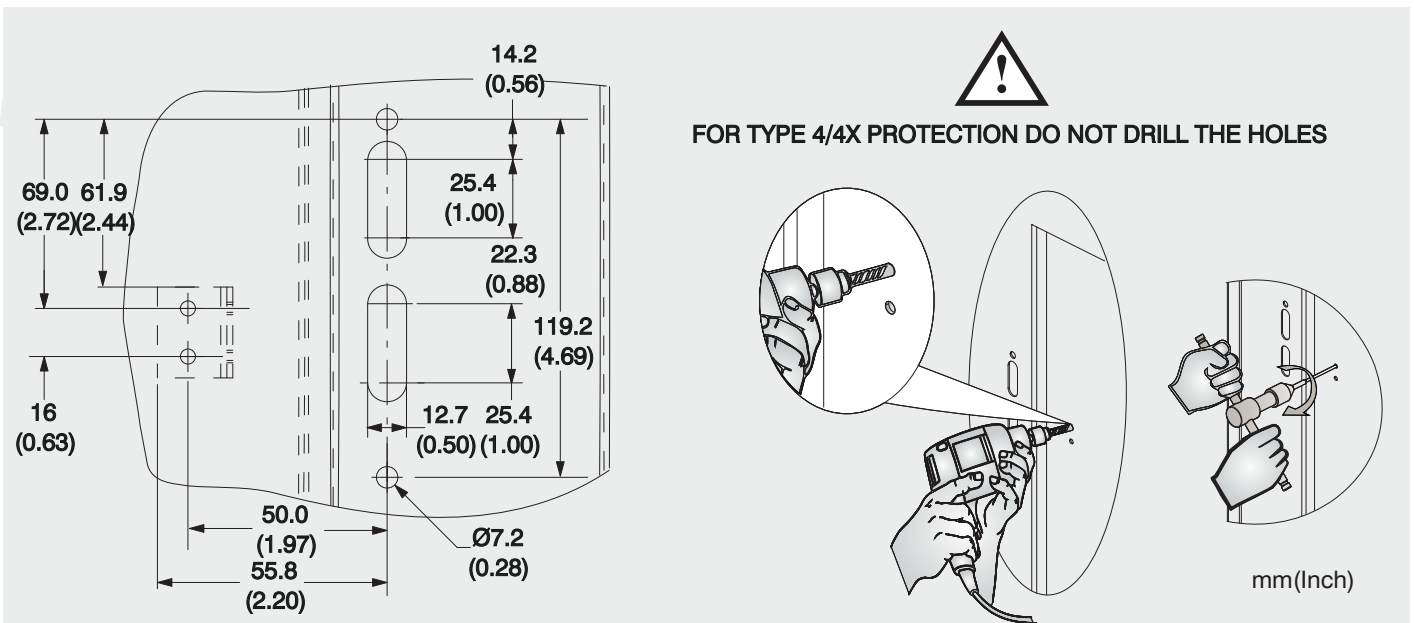
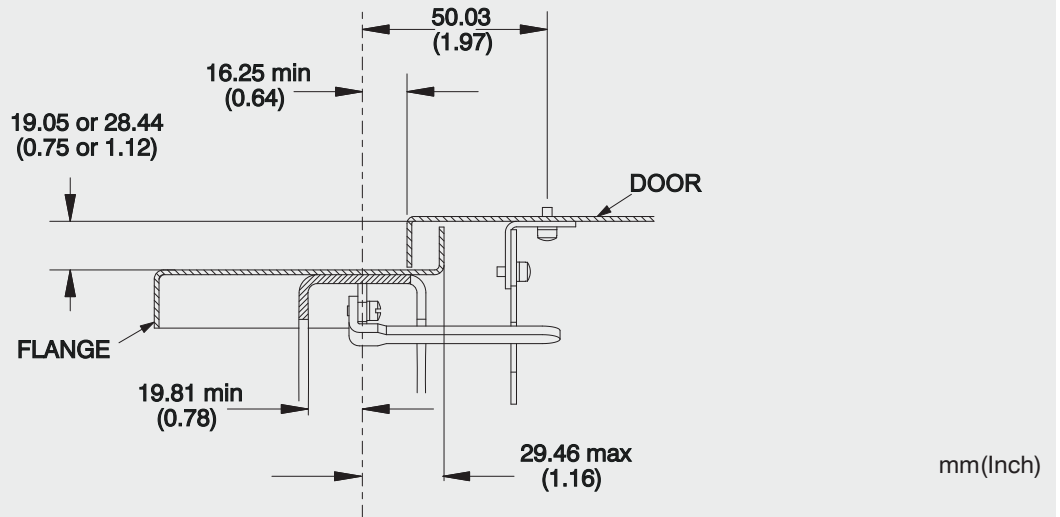
* Maximum E dimension only if F = 4.5".

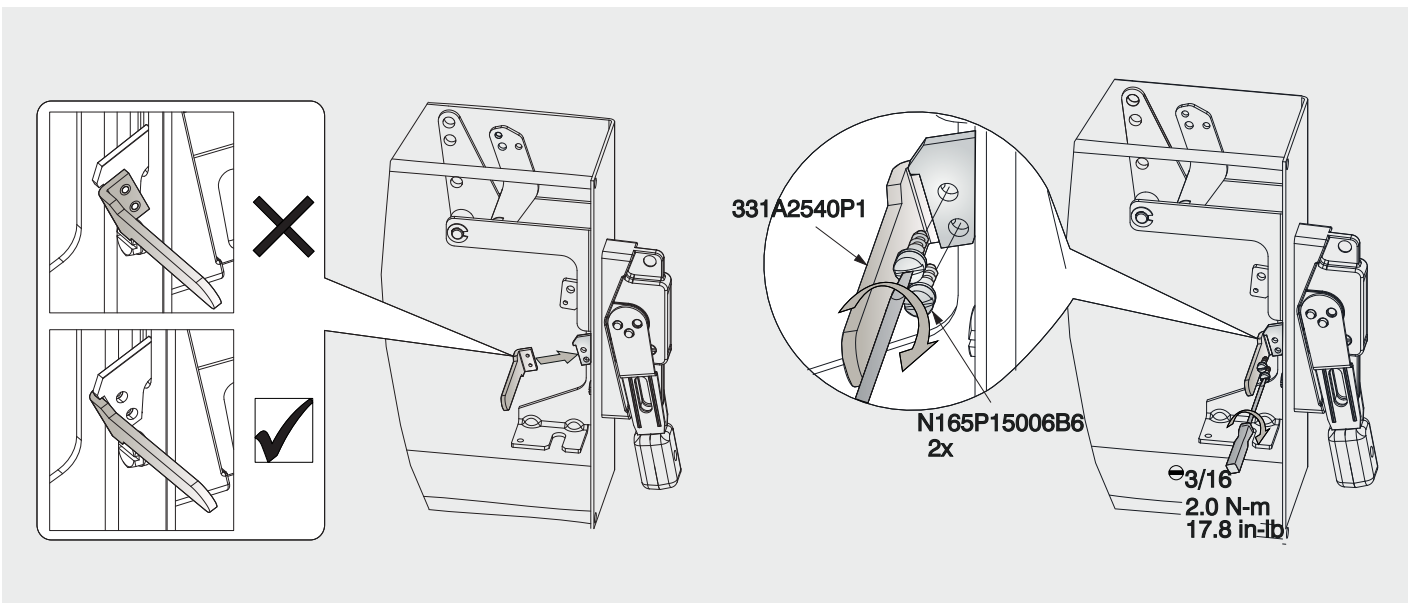
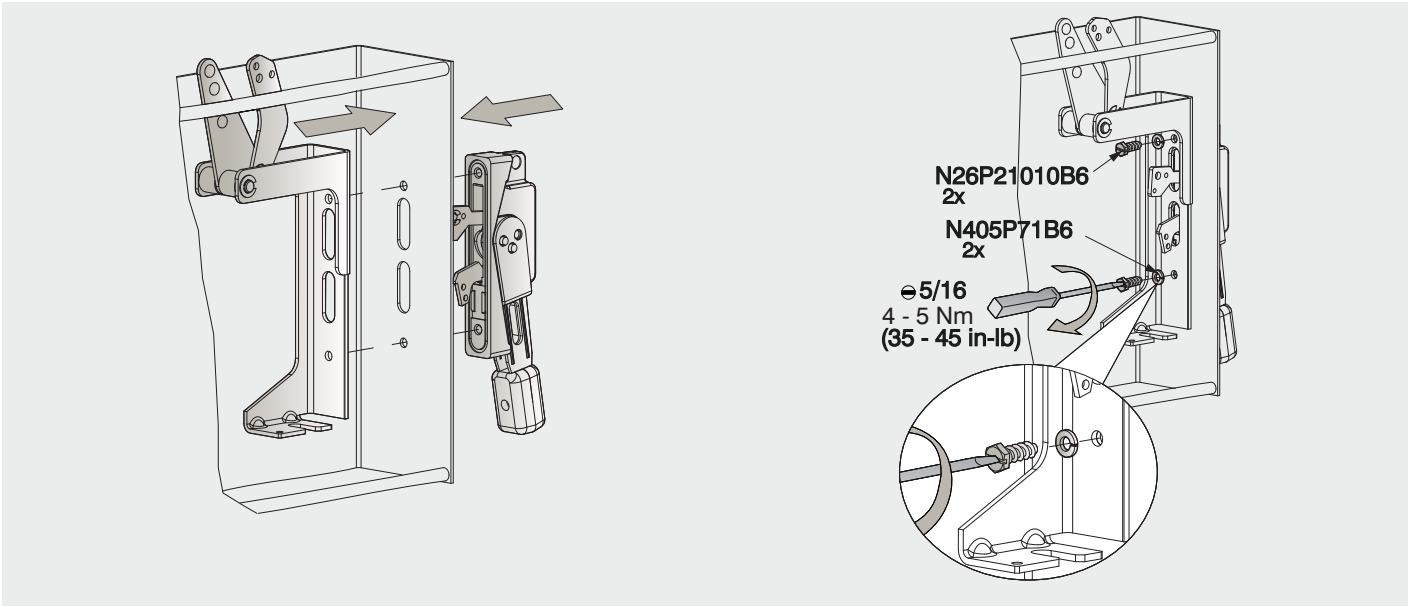
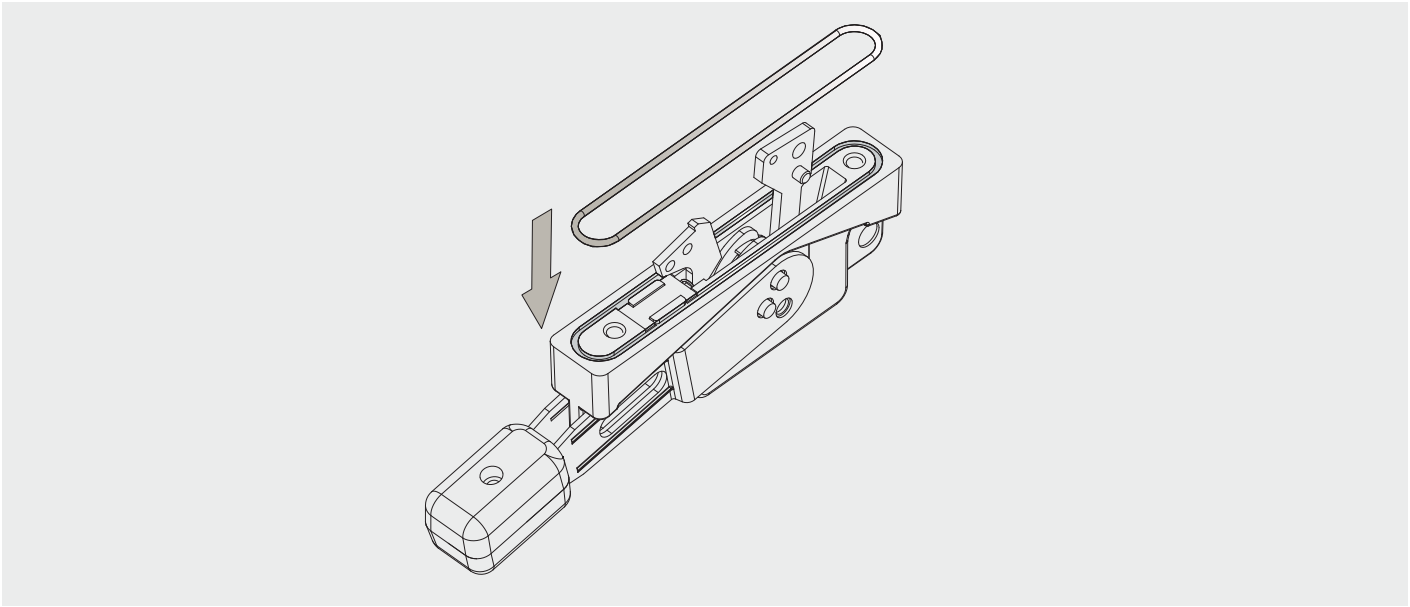
To determine maximum mounting dimensions for 60-inch through 120-inch-long operating cables, add the respective additional lengths to the 48-inch cable maximum dimensions. (For example, add 12 inches to E, F, and G dimensions for 60-inch cable length.)

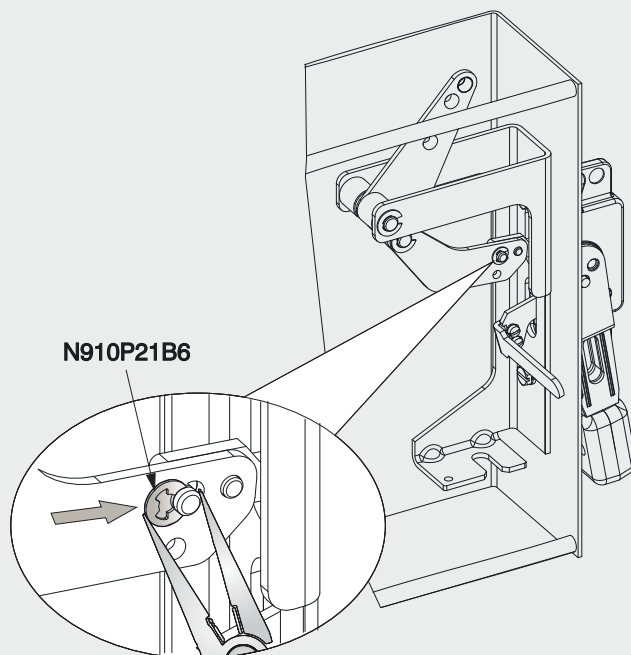
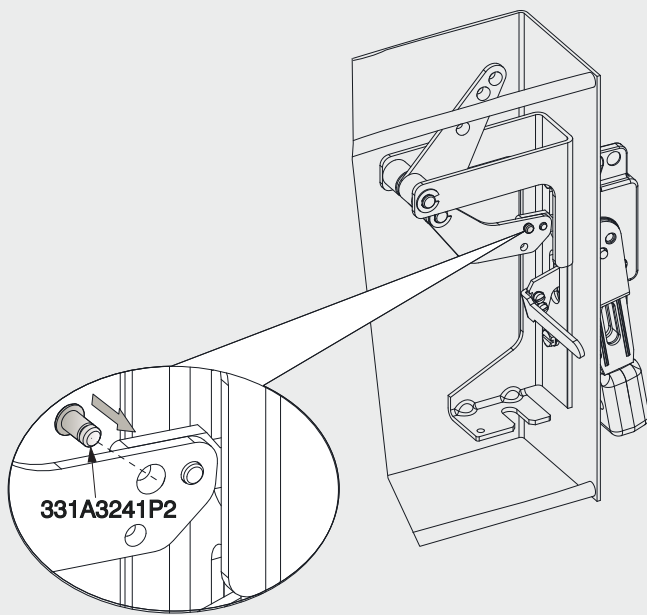
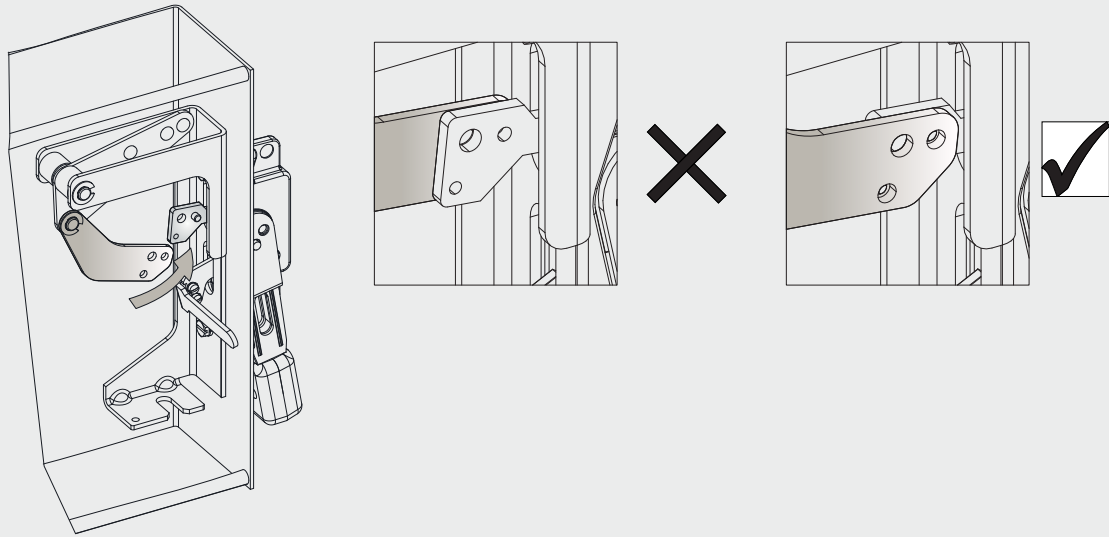
Circuit Breaker Mounting-Zone Dimensions



When cable is installed, the minimum cable bend radius should not be less than 3 inches. The minimum cable bending requirement must be met to ensure a safe operating environment.

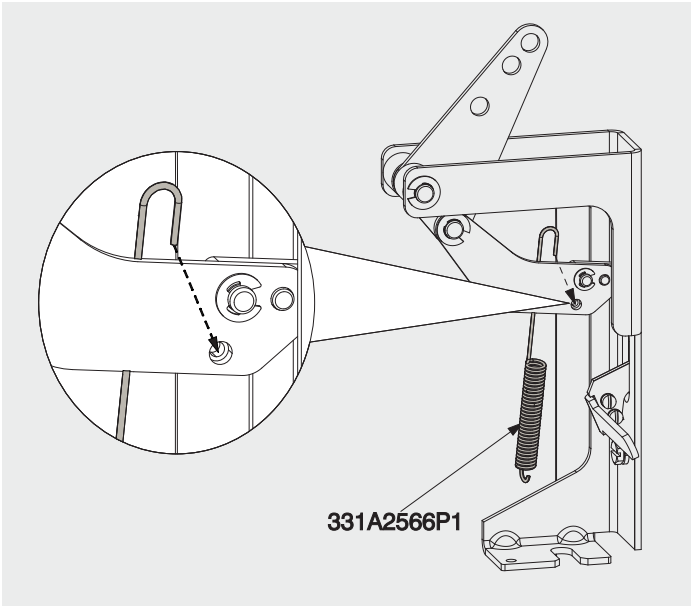






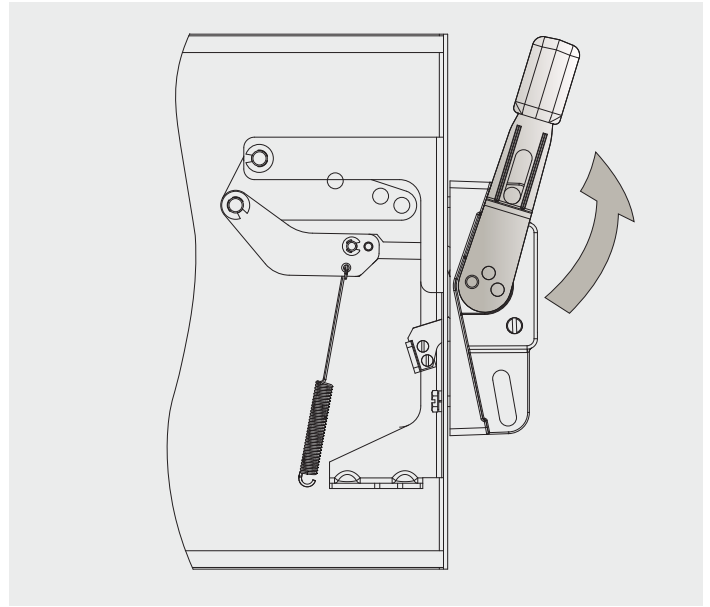
7

331A2566P1



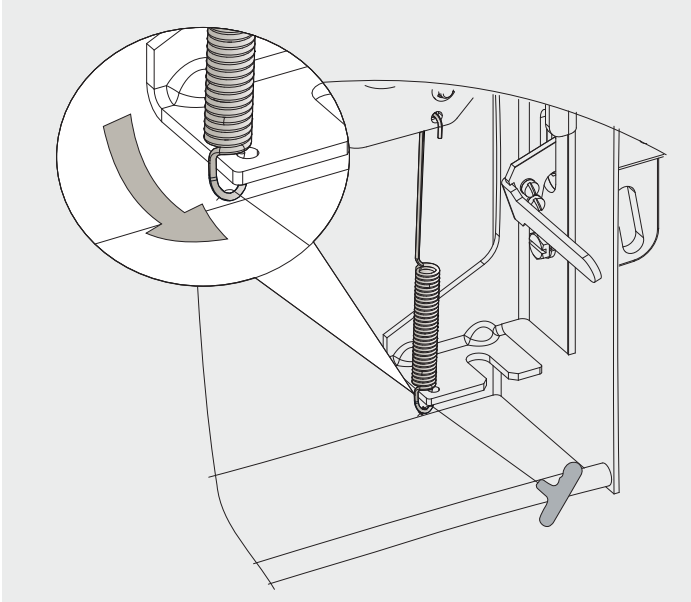
8

331A2566P1



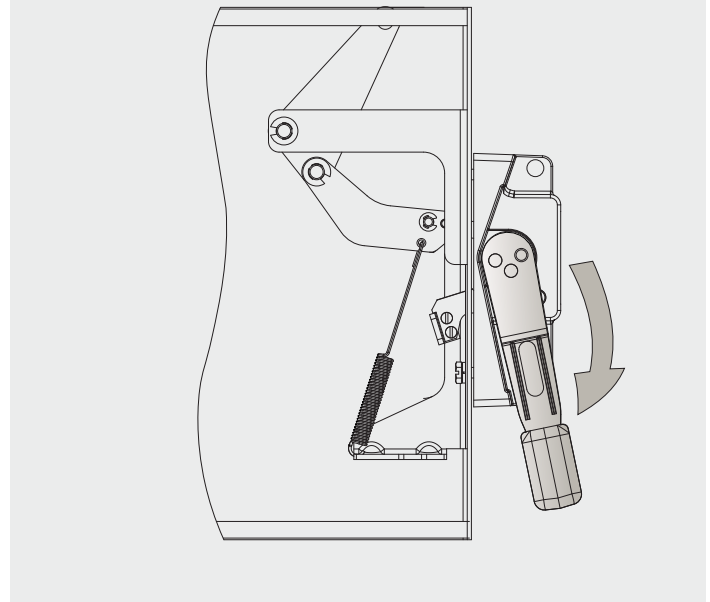
9

331A2566P1



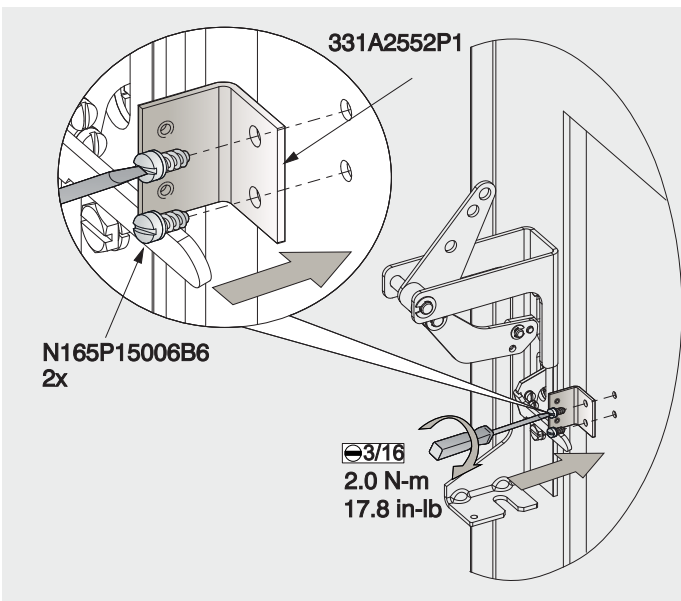
10

331A2566P1



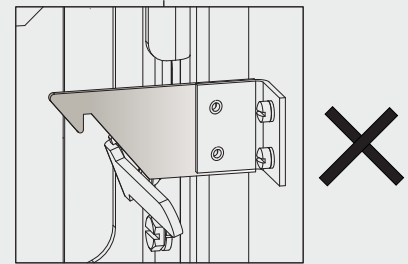
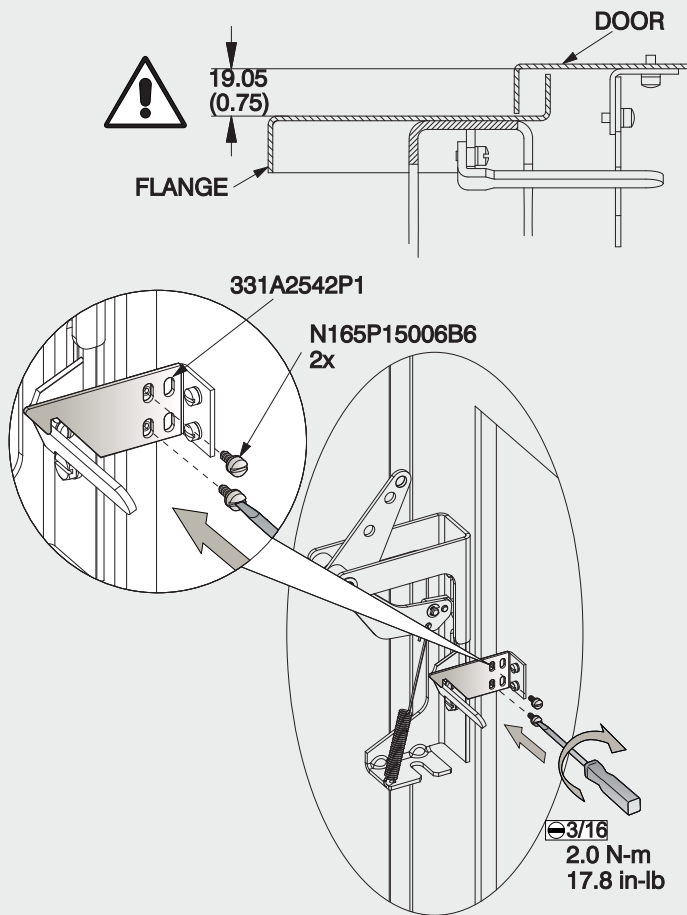
11

331A2552P1/ N165P15006B6



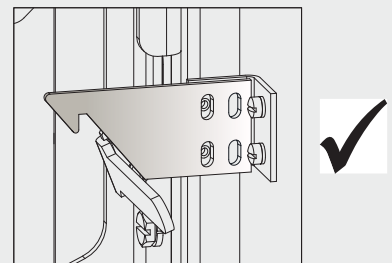
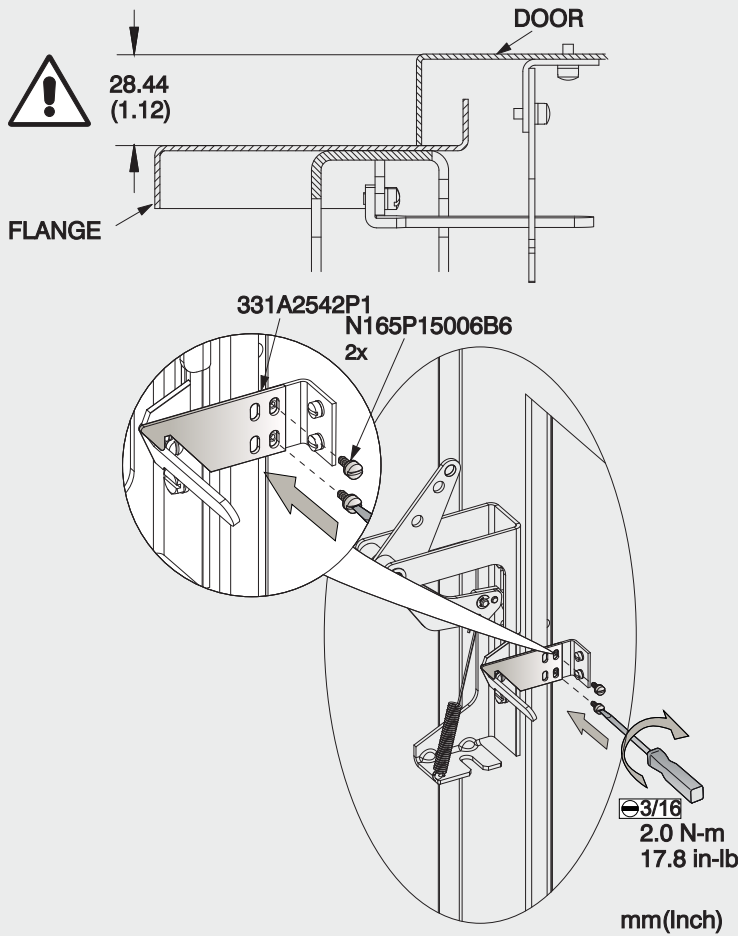
FOR TYPE 4/4X PROTECTION 331A2552P1 MUST BE WELDED

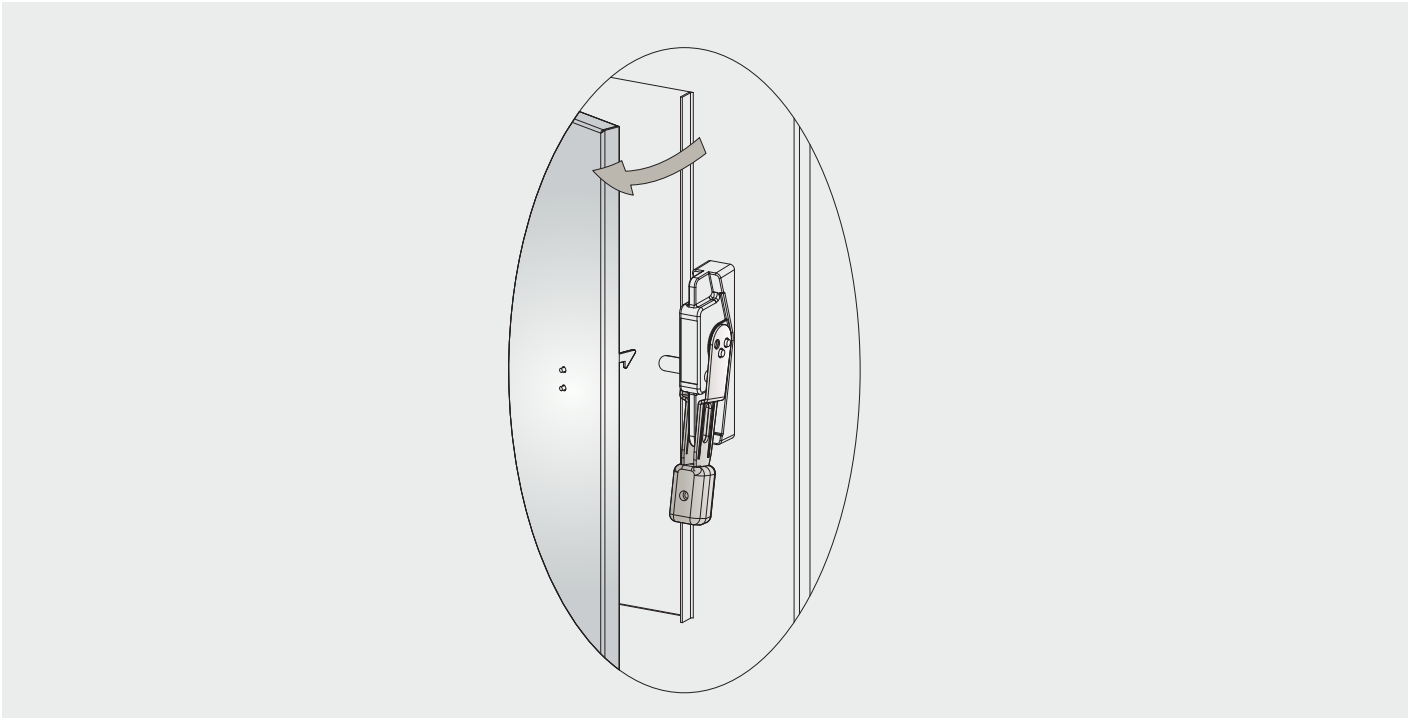
12A



OR

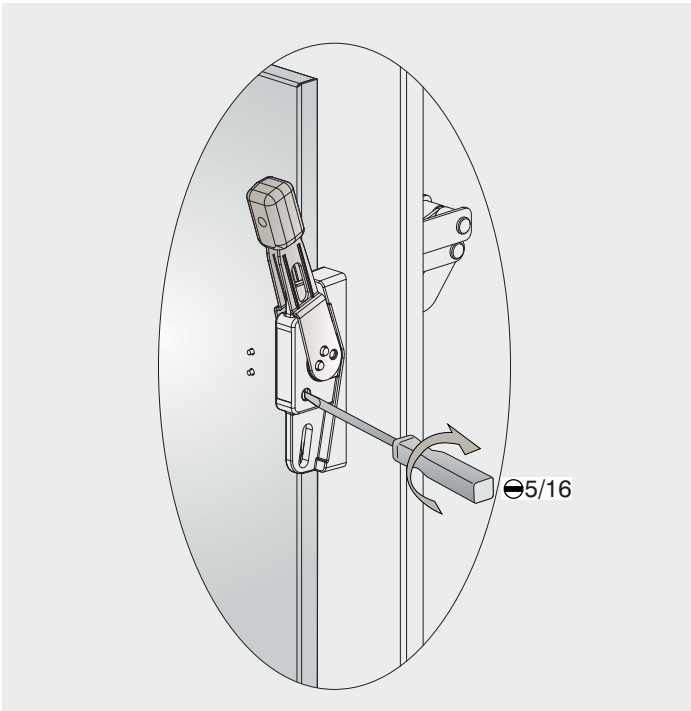
12B





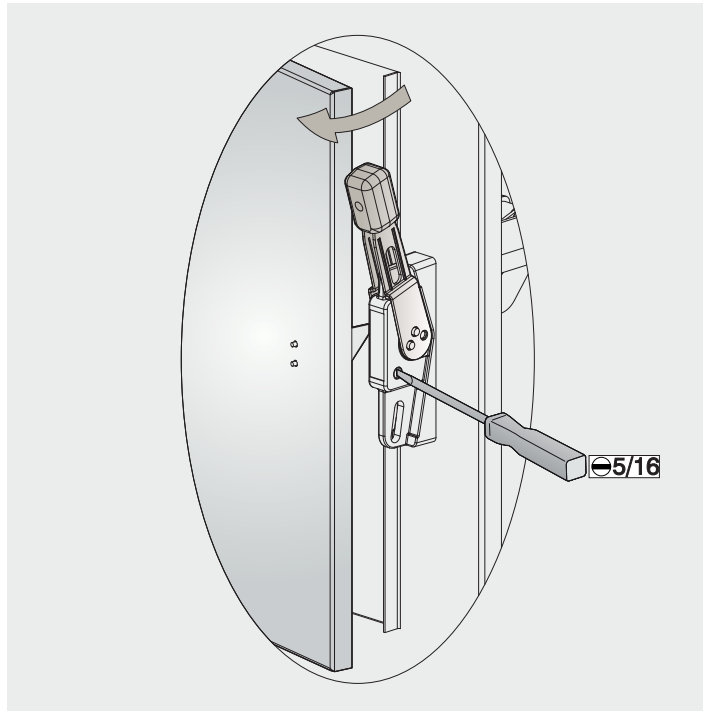
14

FINAL ASSEMBLING



15

FINAL ASSEMBLING



These instructions do not purport to cover all details or variations in equipment nor to provide for every possible contingency to be met in connection with installation operation or maintenance.