

**MADISON Metal hand shower with porcelain insert (white) - Brushed Dark
Platinum**




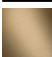

MADISON

28 002 970 Product version from 4/1/2025

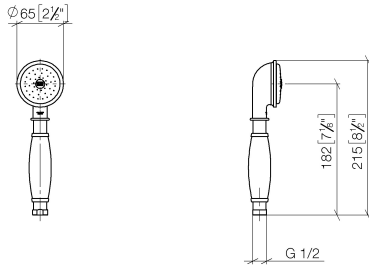


- spray head Ø 64mm
- COMPACT RAIN, max. flow rate 9 l/min (at 3 bar)
- Function from: 6 l/min
- 1/2" connection
- inherently safe from back flow
- with anti-scale system

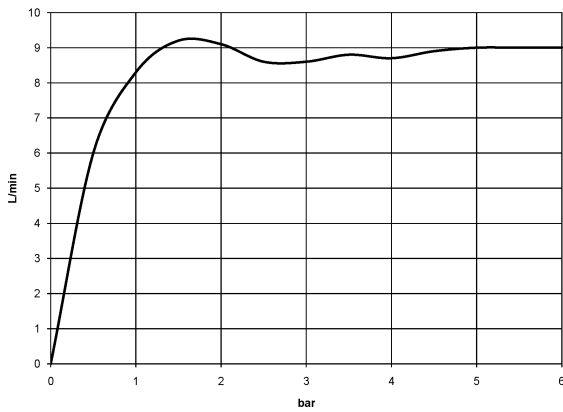
Notes:

	Brushed Dark Platinum	28 002 970-99
	Chrome	28 002 970-00
	Gold (23.9kt)	28 002 970-01
	Brushed Platinum	28 002 970-06
	Platinum	28 002 970-08
	Durabrand (23kt Gold)	28 002 970-09
	Brushed Durabrand (23kt Gold)	28 002 970-28
	Brushed Gold (PVD)	28 002 970-37
	Brushed Dark Brass (PVD)	28 002 970-39
	Brushed Bronze (PVD)	28 002 970-42
	Brushed Chrome	28 002 970-93

28 002 970 Product version from 4/1/2025
mm [inches]



Flow rate chart



Codes & Standards

DIN 4109

ISO 3822

Scottish Water
Byelaws

UK Water Supply
Regulations

Ü-Zeichen



MADISON Metal hand shower with porcelain insert (white) - Brushed Dark
Platinum

MADISON

28 002 970 Product version from 4/1/2025

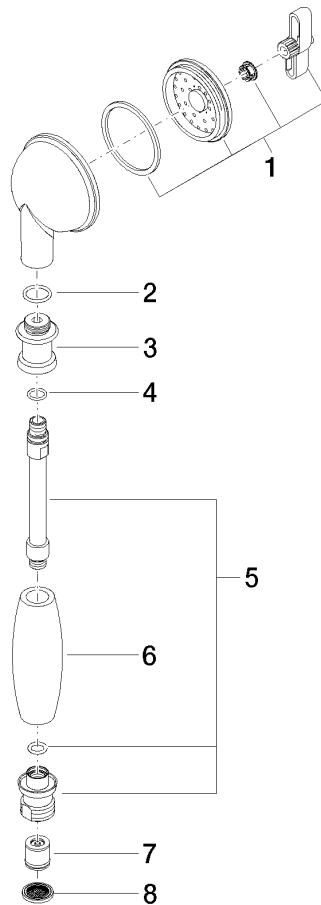
Certificates and sustainability

LGA_8

WRAS_240502

28 002 970 Product version from 4/1/2025

Parts for other finishes can be found here: [Chrome](#)



Spare parts list

No.	Item Number	Name	Quantity used	Delivery time
8	09 23 01 039 90	Sieve seal Ø 19 x 5,5 mm -	1.00	14
7	09 23 01 077 90	Back-flow preventer 8,7 l/min. -	1.00	14
6	11 167 820 60	Handle -	1.00	14
5	90 28 22 033 00-99	Connection Ø 24 x 129 mm - Brushed Dark Platinum	1.00	40
3	09 24 04 059 20-99	Nipple Ø 26 x 23,5 mm - Brushed Dark Platinum	1.00	40
2	09 14 10 069 90	O-Ring EPDM 70 14,0 x 1,78 mm -	1.00	14
4	09 14 10 042 90	O-Ring EPDM 70 9,0 x 1,5 mm -	1.00	14
1	90 12 01 010 00 90	Insert Spray filter, body spray 70 x 110 x 20 mm -	1.00	14