

## Features

- Insaver is a ceiling recessed LED downlight (IP54 from the front), Die-cast aluminium body, loop in loop out connector for quick installation, Non dimmable LED driver, 9.5W; 1150lm; 121lm/W; 3000K; UGR <19 with shallow product depth 50mm. Meets TP(a) requirements.

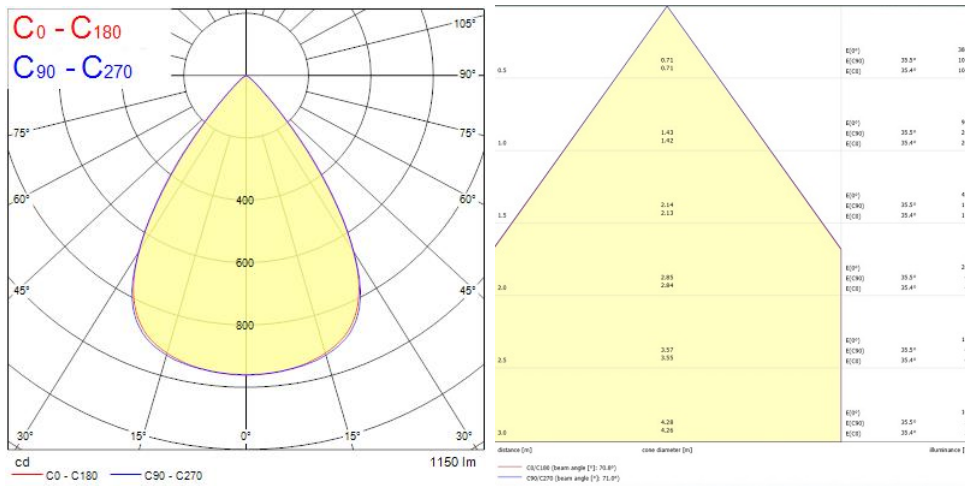
## Product Overview

<b>Product name</b>	Insaver UGR19 IP54 150 1150LM 830
<b>Technology</b>	LED
<b>Cap/Base</b>	N/A
<b>Housing</b>	Aluminium
<b>Mount</b>	Ceiling recessed mounting
<b>General application</b>	Hospitality, Office, Retail
<b>ETIM Class</b>	EC001744
<b>E-number FI</b>	4278509
<b>Fixture luminous flux (lm)</b>	1150
<b>Luminaire efficacy (lm/W)</b>	121
<b>Correlated colour temperature (k)</b>	3000
<b>Light colour</b>	Warm White
<b>CRI (Ra)</b>	80
<b>Colour Variation Initial (SDCM)</b>	3
<b>Beam Angle (°)</b>	70
<b>Glare control</b>	< 19
<b>Photobiological Risk Group</b>	RG1
<b>Total power consumption (W)</b>	9.5
<b>Electrical protection</b>	Class II
<b>Control gear type</b>	LED driver constant current

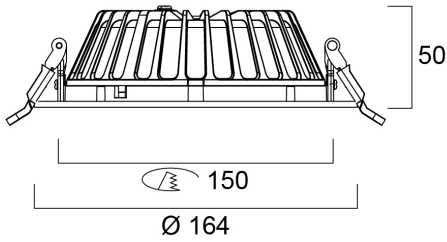
## Insaver UGR19 IP54 150 1150LM 830 0030500

Dimmable	No
LED Flickering Rate	Ultra low (5% or less)
Housing colour	RAL9010
IP rating	IP54/20
IK rating	IK07
Product EAN number	5410288305004
Warranty	5 years
Dimming method	N/A

### Photometry



## Technical drawings



## Data table

### GENERAL DATA

Product name	Insaver UGR19 IP54 150 1150LM 830
Technology	LED
Cap/Base	N/A
Housing	Aluminium
Mount	Ceiling recessed mounting
General application	Hospitality, Office, Retail
Operating temperature range (°C)	-20°C...+40°C
ETIM Class	EC001744
E-number FI	4278509
Warranty	5 years

### OPTICAL DATA

Fixture luminous flux (lm)	1150
Luminaire efficacy (lm/W)	121
Correlated colour temperature (k)	3000
Light colour	Warm White

## Insaver UGR19 IP54 150 1150LM 830 0030500

CRI (Ra)	80
Colour Variation Initial (SDCM)	3
Beam Angle (°)	70
Distribution type	Symmetric
Glare control	< 19
Photobiological Risk Group	RG1

### ELECTRICAL DATA

Total power consumption (W)	9.5
Primary Supply/Product voltage - min (V)	220.0
Primary Supply/Product voltage - max (V)	240.0
Lamp power factor	0.9
THD (at 230 V, 50 Hz, full load, at 100% dimming level) ≤ xx.x %	20.0
Electrical protection	Class II
Control gear required	No
Control gear type	LED driver constant current
Dimmable	No
Dimming method	N/A
Drive current (mA)	300
Inrush Current (A)	15
Inrush Duration (µs)	104
Energy Efficiency Class (A->G) of contained light source	D
Nominal Frequency (Hz)	50/60Hz
LED Flickering Rate	Ultra low (5% or less)
Max. products per 10A C Breaker	66
Max. products per 16A C Breaker	96
Max. products per 16A B Breaker	77
Connectable conductor cross section - Min (mm <sup>2</sup> )	0.75
Connectable conductor cross section - Max (mm <sup>2</sup> )	1.5

### LIFETIME DATA

## Insaver UGR19 IP54 150 1150LM 830 0030500

Lifespan L70 B50	100000
Lifespan L70 B20	100000
Lifespan L70 B10	100000
Lifespan L80 B50	100000
Lifespan L80 B20	88000
Lifespan L80 B10	80000
Lifespan L90 B50	50000
Lifespan L90 B20	43000
Lifespan L90 B10	39000

### PHYSICAL DATA

Housing colour	RAL9010
IP rating	IP54/20
IK rating	IK07
Diffuser finish	Other
Diffuser material	None
Reflector finish	Not Applicable
Nominal Product Height (mm)	50
Nominal Product Diameter (mm)	165
Built-in diameter (mm)	150
Weight (kg)	0.45

### PACKAGING

Product EAN number	5410288305004
Packaging single length / height (cm)	17.8
Packaging single width (cm)	17.8
Packaging single depth (cm)	7.0
DUN14 (inner)	15410288305001
Units per outer package	20
Packaging outer length / height (cm)	37.0
Packaging outer width (cm)	37.0
Packaging outer depth (cm)	37.0

### SAFETY DATA

Insaver UGR19 IP54 150 1150LM 830

**0030500**

---

<b>Glow Wire Test (°C)</b>	850
<b>Optimal operating condition (°C)</b>	-20-40
<b>Special purpose lamp</b>	No
<b>Dry applications use only</b>	No
<b>Suitable for household illumination</b>	No