

13 801 892 Product version from 4/1/2024



- 200mm projection
- circular normal flow
- rosette Ø 55 mm
- hole diameter 37 mm
- 1/2" connection
- max. flow 29 l/min at 3 bar flow pressure
- WRAS

	Brushed Dark Platinum	13 801 892-99
	Chrome	13 801 892-00
	Brushed Platinum	13 801 892-06
	Platinum	13 801 892-08
	Dark Chrome	13 801 892-19
	Brushed Light Gold (PVD)	13 801 892-27
	Brushed Durabronze (23kt Gold)	13 801 892-28
	Matte Black	13 801 892-33
	Brushed Gold (PVD)	13 801 892-37
	Brushed Dark Brass (PVD)	13 801 892-39
	Brushed Bronze (PVD)	13 801 892-42
	Brushed Dark Bronze (PVD)	13 801 892-43
	Brushed Champagne (22kt Gold)	13 801 892-46
	Champagne (22kt Gold)	13 801 892-47
	Brushed Chrome	13 801 892-93

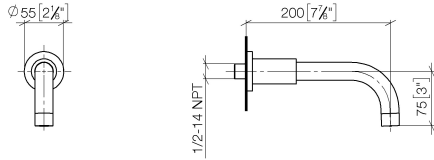
Recommended miscellaneous



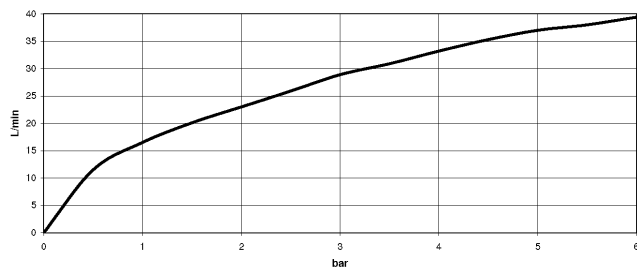
- Concealed wall elbow -** 35 085 970 90
- min. recess depth 90 mm
  - max. recess depth 163 mm

13 801 892 Product version from 4/1/2024

mm [inches]



Flow rate chart



Codes & Standards

ASME A112.18.1      cUPC      DIN 4109      ISO 3822

Scottish Water Byelaws      UK Water Supply Regulations      Ü-Zeichen



## TARA Bath spout for wall mounting - Brushed Dark Platinum

TARA

13 801 892 Product version from 4/1/2024

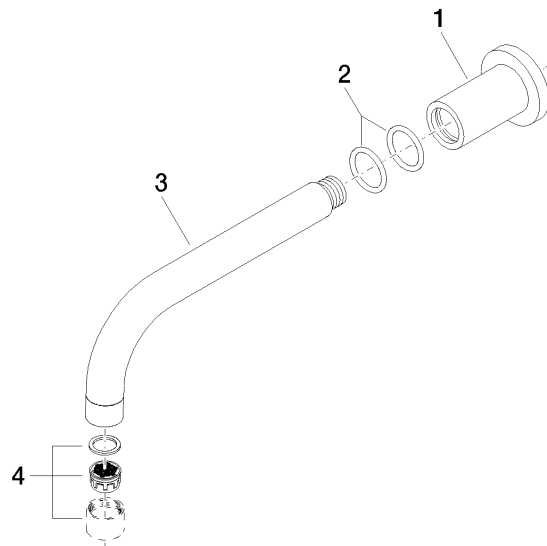
### Certificates and sustainability

LGA\_18

IAPMO\_4976

WRAS\_240602

EPD-DOR-20230287  
-IBA1-EN  
Environmental.prod  
uct-declarat



### Spare parts list

No.	Item Number	Name	Quantity used	Delivery time
2	90 14 10 025 00 90	O-Ring 26,0 x 3,5 mm -	2.00	14
3	04 28 22 198 20-99	Spout Ø 25 x 200 mm - Brushed Dark Platinum	1.00	40
4	90 23 01 024 00-99	Aerator M22x1-IG - Brushed Dark Platinum	1.00	40
1	09 27 89 009-99	Rosette Ø 55 x 70 mm - Brushed Dark Platinum	1.00	40