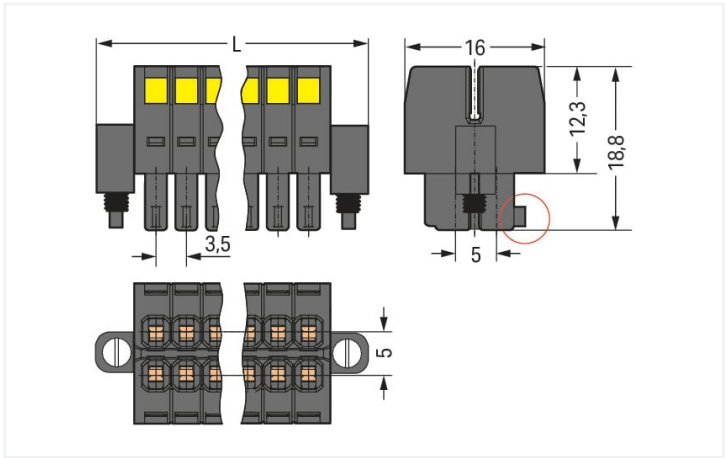


**Data Sheet | Item Number: 713-1102/107-000/031-000**  
1-conductor female connector, 2-row; CAGE CLAMP®; 1.5 mm²; Pin spacing 3.5 mm; 4-pole; 100% protected against mismatching; Screw flange; Strain relief plate; 1,50 mm²; black  
<https://www.wago.com/713-1102/107-000/031-000>

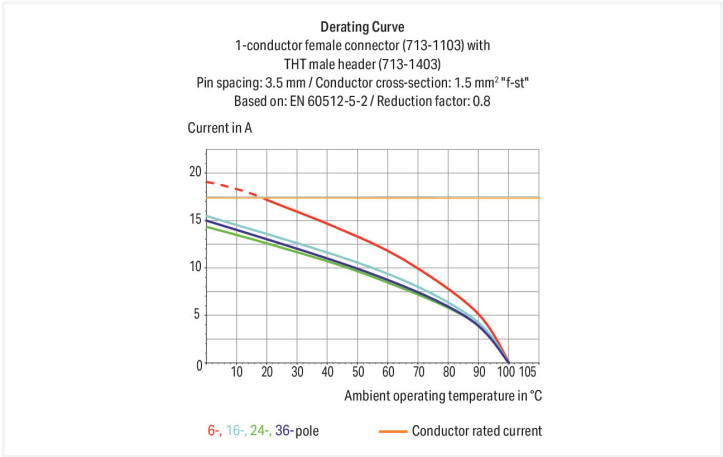


Color: ■ black

Similar to illustration



Dimensions in mm  
 $L = [(pole\ no./2) - 1] \times pin\ spacing + 13.6\ mm$   
Coding finger (red circle)



- Universal connection for all conductor types
- Unique, compact, double-row connector system for conductor cross-sections up to 1.5 mm²
- High-density, wire-to-board connections in very confined spaces
- Centered strain relief plate anchors conductors, while acting as convenient connection and disconnection handle. It also provides easy access to operating slots – even when wired.
- Coding fingers provide 100% protection against mismatching

Notes	
Safety Information	The MCS – MULTI CONNECTION SYSTEM includes connectors without breaking capacity in accordance with DIN EN 61984. When used as intended, these connectors must not be connected/disconnected when live or under load. When used as intended, these connectors must not be connected/disconnected when live or under load. The circuit design should ensure header pins, which can be touched, are not live when unmated.
Variants:	Other versions (or variants) can be requested from WAGO Sales or configured at <a href="https://configurator.wago.com/">https://configurator.wago.com/</a> . Other pole numbers Gold-plated or partially gold-plated contact surfaces



Electrical data

Ratings per IEC/EN		Ratings per UL	
Ratings per	IEC/EN 60664-1	Approvals per	UL 1059
Nominal voltage (III/3)	80 V	Rated voltage UL (Use Group B)	300 V
Rated impulse voltage (III / 3)	2.5 kV	Rated current UL (Use Group B)	10 A
Rated voltage (III/2)	160 V	Rated voltage UL (Use Group C)	50 V
Rated surge voltage (III/2)	2.5 kV	Rated current UL (Use Group C)	10 A
Nominal voltage (II/2)	250 V		
Rated surge voltage (II/2)	2.5 kV		
Rated current	10 A		
Legend (ratings)	(III / 2) $\triangle$ Overvoltage category III / Pollution degree 2		

Ratings per CSA	
Approvals per	CSA
Rated voltage CSA (Use Group B)	300 V
Rated current CSA (Use Group B)	10 A

Connection data

		Connection 1	
Clamping units	4	Connection technology	CAGE CLAMP®
Total number of potentials	4	Actuation type	Operating tool
Number of connection types	1	Actuation direction 1	Operation perpendicular to conductor entry
Number of levels	2	Solid conductor	0.08 ... 1.5 mm² / 28 ... 16 AWG
		Fine-stranded conductor	0.08 ... 1.5 mm² / 28 ... 16 AWG
		Fine-stranded conductor; with insulated ferrule	0.25 ... 1 mm²
		Fine-stranded conductor; with uninsulated ferrule	0.25 ... 1 mm²
		Strip length	6 ... 7 mm / 0.24 ... 0.28 inches
		Pole number	4
		Conductor entry direction to mating direction	0°

Physical data

Pin spacing	3.5 mm / 0.138 inches
Width	17.1 mm / 0.673 inches
Height	18.8 mm / 0.74 inches
Depth	16 mm / 0.63 inches

Mechanical data

Variable coding	Yes
Anti-rotation protection	Yes



Plug-in connection	
Contact type (pluggable connector)	Female connector/socket
Connector (connection type)	for conductor
Mismating protection	Yes
Locking of plug-in connection	Screw flange
Strain relief	Strain relief plate

Material data	
Note (material data)	<a href="#">Information on material specifications can be found here</a>
Color	black
Material group	II
Insulation material (main housing)	Glass fiber-reinforced polyamide (PA66 GF)
Flammability class per UL94	V0
Clamping spring material	Chrome-nickel spring steel (CrNi)
Contact material	Copper alloy
Contact Plating	Tin
Fire load	0.055 MJ
Weight	3.3 g

Environmental requirements	
Limit temperature range	-60 ... +100 °C
Processing temperature	-35 ... +60 °C

Commercial data	
ETIM 8.0	EC001284
ETIM 7.0	EC001284
PU (SPU)	50 pcs
Country of origin	PL
GTIN	4066966446685
Customs tariff number	85366990990

Environmental Product Compliance	
REACH Candidate List Substance	Perfluorobutane sulfonic acid (PFBS) and its salts
RoHS Compliance Status	Compliant, No Exemption
SCIP notification number (Austria)	613ea467-6712-4c51-9e9e-e6f5c4c47cd5
SCIP notification number (Belgium)	523bf8ff-9de4-4504-8f98-2b33846ce7c7
SCIP notification number (Bulgaria)	885f35ac-804e-4ebb-93dc-e197523bc5d6
SCIP notification number (Czech Republic)	6e658c1e-c032-4493-aedb-a2789e11d81a
SCIP notification number (Denmark)	9573198b-a6bb-437a-8f1f-f1b9a0654202
SCIP notification number (Finland)	69d5bc5c-5061-46d1-810e-b32f0c9d729f
SCIP notification number (France)	65bef7e4-cb5b-45c7-a451-fde8624d09a9
SCIP notification number (Germany)	173e12bb-762b-43c1-9056-617e00b24c08
SCIP notification number (Hungary)	0b162e08-8095-4646-aade-1afdd3b4843c
SCIP notification number (Italy)	1fe85d3e-76d4-4b4c-a262-d8e5e85a04df
SCIP notification number (Netherlands)	3b3fc4e1-d28a-4417-8f4a-ec6300090ce7
SCIP notification number (Poland)	be61782e-8c50-4d38-a466-0b9ff169d3a7
SCIP notification number (Romania)	0fb3bbbd-9073-46a8-9733-332c6a06cd27
SCIP notification number (Sweden)	243f3772-7688-49e0-ad02-13f2eec9222e



Approvals / Certificates

General approvals



Approval	Standard	Certificate Name
CB DEKRA Certification B.V.	IEC 61984	NL-102427
CSA CSA Group	C22.2	2315087
KEMA/KEUR DEKRA Certification B.V.	EN 61984	71-133740
UL Underwriters Laboratories Inc.	UL 1059	UL-US- L45172-6187124-22905991-1

Downloads

Environmental Product Compliance

Compliance Search

Documentation

Additional Information			
Technical Section	03.04.2019	pdf 2027.26 KB	

1 Compatible Products

1.1 System counterpart

1.1.1 Male connector/plug



[Item No.: 713-1422/107-000](#)  
THT male header, 2-row; 0.8 x 0.8 mm solder pin; angled; 100% protected against mismatching; Threaded flange; Pin spacing 3.5 mm; 4-pole; black





[Item No.: 713-1402/107-000](#)  
THT male header, 2-row; 0.8 x 0.8 mm solder pin; straight; 100% protected against mismatching; Threaded flange; Pin spacing 3.5 mm; 4-pole; black



1.2 Optional Accessories

1.2.1 Ferrule

1.2.1.1 Ferrule

 <b>Item No.: 216-301</b> Ferrule; Sleeve for 0.25 mm² / AWG 24; insulated; electro-tin plated; yellow	 <b>Item No.: 216-321</b> Ferrule; Sleeve for 0.25 mm² / AWG 24; insulated; electro-tin plated; yellow	 <b>Item No.: 216-131</b> Ferrule; Sleeve for 0.25 mm² / AWG 24; uninsulated; electro-tin plated; silver-colored	 <b>Item No.: 216-302</b> Ferrule; Sleeve for 0.34 mm² / 22 AWG; insulated; electro-tin plated; light turquoise
 <b>Item No.: 216-322</b> Ferrule; Sleeve for 0.34 mm² / 22 AWG; insulated; electro-tin plated; light turquoise	 <b>Item No.: 216-132</b> Ferrule; Sleeve for 0.34 mm² / AWG 24; uninsulated; electro-tin plated	 <b>Item No.: 216-241</b> Ferrule; Sleeve for 0.5 mm² / 20 AWG; insulated; electro-tin plated; electrolytic copper; gastight crimped; acc. to DIN 46228, Part 4/09.90; white	 <b>Item No.: 216-201</b> Ferrule; Sleeve for 0.5 mm² / 20 AWG; insulated; electro-tin plated; white
 <b>Item No.: 216-221</b> Ferrule; Sleeve for 0.5 mm² / 20 AWG; insulated; electro-tin plated; white	 <b>Item No.: 216-141</b> Ferrule; Sleeve for 0.5 mm² / 20 AWG; uninsulated; electro-tin plated; electrolytic copper; gastight crimped; acc. to DIN 46228, Part 1/08.92	 <b>Item No.: 216-101</b> Ferrule; Sleeve for 0.5 mm² / AWG 22; uninsulated; electro-tin plated; silver-colored	 <b>Item No.: 216-121</b> Ferrule; Sleeve for 0.5 mm² / AWG 22; uninsulated; electro-tin plated; silver-colored
 <b>Item No.: 216-242</b> Ferrule; Sleeve for 0.75 mm² / 18 AWG; insulated; electro-tin plated; electrolytic copper; gastight crimped; acc. to DIN 46228, Part 4/09.90; gray	 <b>Item No.: 216-262</b> Ferrule; Sleeve for 0.75 mm² / 18 AWG; insulated; electro-tin plated; electrolytic copper; gastight crimped; acc. to DIN 46228, Part 4/09.90; gray	 <b>Item No.: 216-202</b> Ferrule; Sleeve for 0.75 mm² / 18 AWG; insulated; electro-tin plated; gray	 <b>Item No.: 216-222</b> Ferrule; Sleeve for 0.75 mm² / 18 AWG; insulated; electro-tin plated; gray
 <b>Item No.: 216-142</b> Ferrule; Sleeve for 0.75 mm² / 18 AWG; uninsulated; electro-tin plated; electrolytic copper; gastight crimped; acc. to DIN 46228, Part 1/08.92	 <b>Item No.: 216-102</b> Ferrule; Sleeve for 0.75 mm² / AWG 20; uninsulated; electro-tin plated; silver-colored	 <b>Item No.: 216-122</b> Ferrule; Sleeve for 0.75 mm² / AWG 20; uninsulated; electro-tin plated; silver-colored	 <b>Item No.: 216-243</b> Ferrule; Sleeve for 1 mm² / AWG 18; insulated; electro-tin plated; electrolytic copper; gastight crimped; acc. to DIN 46228, Part 4/09.90; red
 <b>Item No.: 216-263</b> Ferrule; Sleeve for 1 mm² / AWG 18; insulated; electro-tin plated; electrolytic copper; gastight crimped; acc. to DIN 46228, Part 4/09.90; red	 <b>Item No.: 216-203</b> Ferrule; Sleeve for 1 mm² / AWG 18; insulated; electro-tin plated; red	 <b>Item No.: 216-223</b> Ferrule; Sleeve for 1 mm² / AWG 18; insulated; electro-tin plated; red	 <b>Item No.: 216-103</b> Ferrule; Sleeve for 1 mm² / AWG 18; uninsulated; electro-tin plated
 <b>Item No.: 216-143</b> Ferrule; Sleeve for 1 mm² / AWG 18; uninsulated; electro-tin plated; electrolytic copper; gastight crimped; acc. to DIN 46228, Part 1/08.92	 <b>Item No.: 216-123</b> Ferrule; Sleeve for 1 mm² / AWG 18; uninsulated; electro-tin plated; silver-colored		

1.2.2 Stickers with operating instructions

1.2.2.1 Stickers with operating instructions



**Item No.: 210-493**  
Stickers for operating instructions

1.2.3 Strain relief

1.2.3.1 Strain relief plate

**Item No.: 713-126**  
Strain relief plate; for female connectors;  
11 mm wide; 1 part; Pin spacing 3.5 mm;  
black

1.2.4 Tool

1.2.4.1 Operating tool



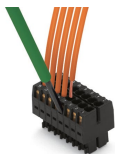
**Item No.: 210-719**  
Operating tool; Blade: 2.5 x 0.4 mm; with a  
partially insulated shaft



**Item No.: 210-647**  
Operating tool; Blade: 2.5 x 0.4 mm; with a  
partially insulated shaft; multicoloured

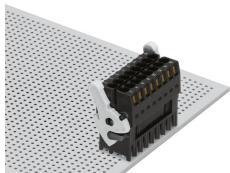
Installation Notes

Conductor termination

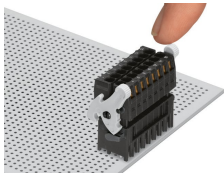


Inserting a conductor via (2.5 x 0.4) mm  
screwdriver.

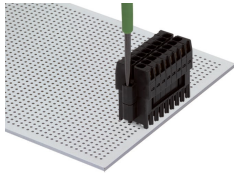
Locking system



Lever as a lock – when closed, female  
connector is locked.



Lever as a disconnection aid – when open-  
ed, female connector is disconnected.  
Rotating the lever lifts the female  
connector out of the male header.



Screw interlock can only be disconnected  
using a tool.

Coding

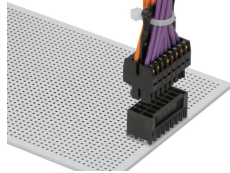


Coding a female connector by removing  
coding finger(s).

## Strain relief



Strain relief plate for field assembly



Centered strain relief plate anchors conductors for easy disconnection.