

28 699 970 Product version from 3/13/2017



- rain shower Ø 400 mm
- PURE RAIN, max. flow rate 20 l/min (at 3 bar)
- Max. flow rate 20 l/min (at 3 bar)
- Function from: 12 l/min
- with anti-scale system
- quick clearing

Technical data:

- rosette Ø 60 mm optional
- 1/2" connection

Notes:

	Brushed Platinum	28 699 970-06
	Chrome	28 699 970-00
	Platinum	28 699 970-08
	Dark Chrome	28 699 970-19
	Light Gold (PVD)	28 699 970-26
	Brushed Light Gold (PVD)	28 699 970-27
	Brushed Durabrass (23kt Gold)	28 699 970-28
	Matte Black	28 699 970-33
	Brushed Gold (PVD)	28 699 970-37
	Brushed Dark Brass (PVD)	28 699 970-39
	Brushed Bronze (PVD)	28 699 970-42
	Brushed Dark Bronze (PVD)	28 699 970-43
	Brushed Champagne (22kt Gold)	28 699 970-46
	Champagne (22kt Gold)	28 699 970-47
	Brushed Chrome	28 699 970-93
	Brushed Dark Platinum	28 699 970-99

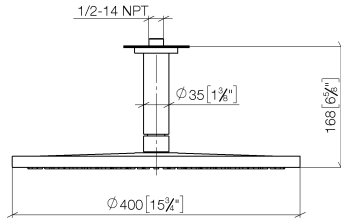
Recommended miscellaneous



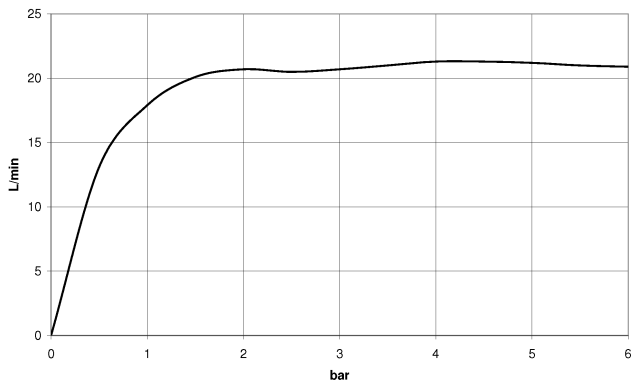
- Concealed wall elbow -** 35 085 970 90
- min. recess depth 90 mm
 - max. recess depth 163 mm

28 699 970 Product version from 3/13/2017

mm [inches]



Flow rate chart



Codes & Standards

DIN 4109

EN 1112

ISO 3822

Scottish Water
Byelaws

UK Water Supply
Regulations

Ü-Zeichen



Rainshower with ceiling fixing 400 mm - Brushed Platinum

SERIES SPECIFIC

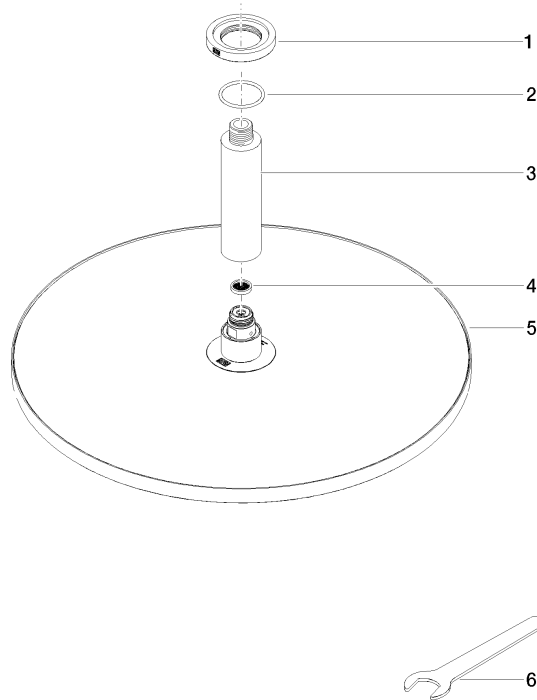
28 699 970 Product version from 3/13/2017

Certificates and sustainability

LGA_29

DVGW_DW-
6517DN0

WRAS_2212



Spare parts list

No.	Item Number	Name	Quantity used	Delivery time
1	09 27 22 040-06	Rosette Ø 60 x Ø 35 x 9 mm - Brushed Platinum	1.00	20
3	09 11 03 080-06	Connection Ø 35 x 135 mm - Brushed Platinum	1.00	20
5	90 12 05 090 00-06	Rainshower round Ø 400 mm - Brushed Platinum	1.00	20
6	90 30 09 069 00 90	Spanner -	1.00	14
4	09 23 01 075 90	Sieve seal Ø 18 x 3,5 mm -	1.00	14
2	09 14 10 141 90	O-Ring NBR 70 34,59 x 2,62 mm -	1.00	14