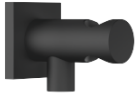


28 490 970 Product version from 6/1/2024



- 3/8" shower outlet
- rosette 60 x 60 mm
- 1/2" connection
- WRAS

Intrinsic protection against back flow.

| | | |
|---|-------------------------------|---------------|
|  | Matte Black | 28 490 970-33 |
|  | Chrome | 28 490 970-00 |
|  | Brushed Platinum | 28 490 970-06 |
|  | Platinum | 28 490 970-08 |
|  | Dark Chrome | 28 490 970-19 |
|  | Brushed Light Gold (PVD) | 28 490 970-27 |
|  | Brushed Durabrass (23kt Gold) | 28 490 970-28 |
|  | Brushed Gold (PVD) | 28 490 970-37 |
|  | Brushed Dark Brass (PVD) | 28 490 970-39 |
|  | Brushed Bronze (PVD) | 28 490 970-42 |
|  | Brushed Dark Bronze (PVD) | 28 490 970-43 |
|  | Brushed Champagne (22kt Gold) | 28 490 970-46 |
|  | Champagne (22kt Gold) | 28 490 970-47 |
|  | Brushed Chrome | 28 490 970-93 |
|  | Brushed Dark Platinum | 28 490 970-99 |

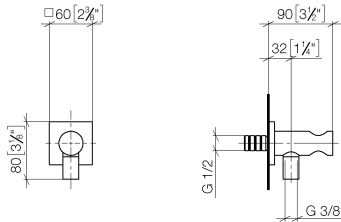
Recommended miscellaneous

- Concealed wall elbow -** 35 085 970 90
- min. recess depth 90 mm
 - max. recess depth 163 mm



28 490 970 Product version from 6/1/2024

mm [inches]

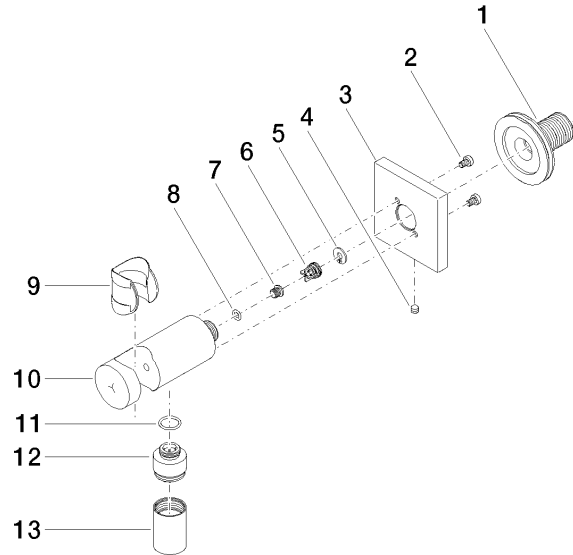


Codes & Standards

| | | |
|---------|---------------------------|--------------------------------|
| EN 1717 | Scottish Water Byelaws | UK Water Supply Regulations |
|---------|---------------------------|--------------------------------|

Certificates and sustainability

Belgaqua_21-024-2 WRAS_250402 Belgaqua_25-344-2



Spare parts list

| No. | Item Number | Name | Quantity used | Delivery time |
|--|--------------------|--|---------------|---------------|
| 5 | 09 16 01 023 90 | Ring Retaining ring Ø 11 x 1 mm - | 1.00 | 14 |
| 1 | 90 24 03 280 00 90 | Connection - | 1.00 | 14 |
| 2 | 09 30 30 037 90 | Mounting Cylinder head screw with hexagon socket with low profile, without key guide M4 x 6 mm - | 2.00 | 14 |
| 4 | 09 31 11 112 90 | Mounting Threaded pin with hexagon socket with point M5 x 6 mm - | 1.00 | - |
| Spare part can no longer be ordered, please order the replacement item | | | | |
| | 043111120090 | Mounting Threaded pin M5 x 6 mm - | | |
| 7 | 09 30 30 113 20 90 | Mounting Ø 8 x 6,5 mm - | 1.00 | 14 |
| 10 | 09 11 03 124-33 | Holder Ø 30 x 93 mm - Matte Black | 1.00 | 40 |
| 8 | 09 14 10 001 90 | O-Ring EPDM 70 4,5 x 1,5 mm - | 1.00 | 14 |
| 3 | 09 27 97 043-33 | Rosette 60 x 60 x 9 x Ø 18 mm - Matte Black | 1.00 | 40 |
| 9 | 09 18 40 216 90 | Sleeve 29 x 32 x 29 mm - | 1.00 | 14 |
| 6 | 09 23 01 131 90 | Back-flow preventer without limitation Ø 10 x 10,5 mm - | 1.00 | 14 |
| 11 | 09 14 10 213 90 | O-Ring EPDM 70 12,0 x 1,5 mm - | 1.00 | 14 |
| 12 | 09 24 03 279-33 | Nipple Ø 22 x 21 mm - Matte Black | 1.00 | 40 |
| 13 | 90 21 02 069 00-33 | Cover/sleeve M20 x 1 - Matte Black | 1.00 | 40 |