

DATASHEET

INDUXEL222

Tubular Fittings ATEX zones 2, 22



Features

- Emergency lighting suitable for zones 2, 22
- Easy to install
- Polycarbonate diffuser+UV protected
- Stainless steel solution (316L)
- Pictogram included
- Rapid maintenance and remote monitoring with Naveo®Pro Wired supervision
- Including accessories (cable gland & pictograms)

INDUXEL222

Certifications	Spécifications	Standards
	<p>Diffuser: Polycarbonate Supply with pictogram and one cable gland</p> <p>Rated voltage : 230 V - 50Hz Class II luminaire with limited surface temperature, suitable for environments where conductive dust accumulation is possible, according to En 60598-2-24, according to ∇ marking.</p>	<p>Approved to EN 60079-0 : General requirements EN 60079-31 : Enclosure "t" EN 60079-7 : Increase safety "e"</p> <p>ATEX directive (2014/34/EU) Directive 2014/34/EU Ex ec IIC T6 Gc Ex tc IIIC T50°C Dc Ambiant temperature: 0°C to 40°C</p> <p>EMC Directive (2014/30/UE) EN 55015 : Radio disturbance of electrical lighting equipment EN 61547 : EMC immunity of electrical lighting equipment EN 61000-3-2 : Harmonic current emission class EN 61000-3-3 : Limitation of voltage changes and flicker</p> <p>Low voltage directive (2014/35/EU) EN 60598-1 : General requirements for luminaires EN 60598-2-22 : Particular requirements for emergency lighting</p> <p>Glow wire test : 850°C</p> <p>IP protection : IEC 60529: IP65</p> <p>Impact protection index: IEC 62262: IK07</p>

Range

Material code	Type code	Function	Testing type	IP/IK	M/NM	Lumen output (lm)	Power consumption (W)	Rated voltage	Battery Ni-MH ABB
*Self contained - 3 hours									
XTE9600S-M3/ST EX	1129105 7TCA309185R0011	Lighting Signage	Auto test	65/07	M/NM	200	3.5/1.9	230V 50Hz	4.8V-1.2 Ah
XTE9600S-M3/COM EX	1139105 7TCA309185R0012	Lighting Signage	Naveo®Pro wired	65/07	M/NM	200	3.5/1.9	230V 50Hz	4.8V-1.2 Ah



*Stickers are included - Glow wire test : 850°C

Accessories and spare parts

Description	Material code	GID Code
InduXEL cable entry cover kit	102 601K	7TCA091830R0075
Pictogram PF 202/51	12220251	7TCA091350R4186
Pictogram PF 202/52	12220252	7TCA091350R4184
Pictogram PF 202/53	12220253	7TCA091350R4187
Pictogram PF 202/58	12220258	7TCA091350R4183
Pictogram PF 202/50	12220250	7TCA091350R4185
Kit cable gland M20-Nylon	674 114	7TCA022225R0002
Battery 4,8V-1,2Ah for InduXEL222	102 702K	7TCA091830R0077

Pictograms



PF 202/53



PF 202/52



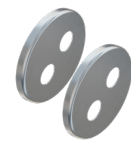
PF 202/58



PF 202/51



PF 202/50



Cable entry cover kit
102 601K



Kit cable gland
674 114

InduXEL222

Distance table for even escape routes

Mounting Height [m]	Diagram 1	Diagram 2	Diagram 3	Diagram 4	Diagram 5
2.00	4.35	10.97	9.73	8.53	3.51
2.50	4.62	11.80	10.64	9.46	3.83
3.00	4.82	12.50	11.38	10.22	4.07
3.50	4.95	13.04	11.96	10.85	4.25
4.00	5.03	13.48	12.42	11.37	4.36
4.50	5.04	13.82	12.79	11.79	4.42
5.00	5.00	14.05	13.08	12.10	4.43
5.50	4.90	14.20	13.26	12.33	4.38
6.00	4.74	14.28	13.37	12.50	4.28

The spacing tables are based on the following parameters:

- Maintenance factor: 0.80
- Emergency lighting factor: 1.00
- Minimum illuminance on centre line: 1.00 lx
- Minimum illuminance on half of escape route width: 0.50 lx
- Diversity on the centre line max. 40 : 1
- Width of escape route: 2.00 m

Dimensions

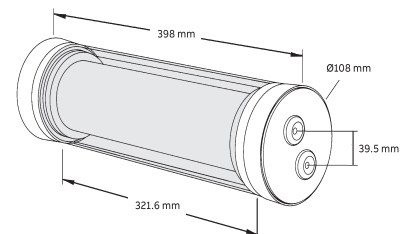
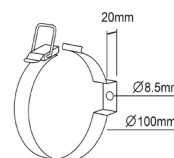


ABB Kaufel GmbH

Am Borsigturm 100
13507 Berlin
Deutschland
Tel. +49 (0) 70 17 3 - 3300
Fax +49 (0) 70 17 3 - 3399
E-mail: kaufel.germany@de.abb.com

Service

Tel. +49 800 535 28335
Fax +49 30 70173 - 3336
E-mail: kaufel.kundendienst@de.abb.com
Hotline (werktages / on workdays):
08:00 - 16:00
Rufbereitschaft / On call service
(kostenpflichtig / chargeable):
16:00 - 08:00
www.abb.de/kaufel

EMERGI-LITE

Bruntcliffe Lane
Morley, Leeds
LS27 9LL - United Kingdom

UK Sales support: Tel. +44 (0) 113 281 0600
UK Sales support: E-Mail : gb-leedsquotes@abb.com
Technical support: E-Mail: global-eml-technical@abb.com
Emergi-Lite.co.uk

Other countries

For more information, please reach out to our ABB local contact center. Find out on: new.abb.com/contact-center